

State of Kansas

Annual Report FFY 2016

Sam Brownback, Governor
Richard Carlson, Acting Secretary, Kansas Department of Transportation
Chris Herrick, Director, KDOT Division of Planning and Development
Mike Floberg, Bureau Chief, KDOT Bureau of Transportation Safety and Technology
Chris Bortz, KDOT Bureau of Transportation Safety and Technology

The FFY 2016 Kansas Annual Report is being submitted to National Highway Traffic Safety Administration (NHTSA) and Federal Highway Administration (FHWA). The report describes the activities completed by the State of Kansas in the use of federal highway safety funds, consistent with the guidelines, the priority areas, and other requirements established under Section 402.

Kansas Department of Transportation
Bureau of Transportation Safety and Technology
700 SW Harrison Street
Topeka, KS 66603-3745
(785) 296-3618
FAX (785) 291-3010
www.ksdot.org



Richard Carlson
Acting Secretary, Kansas Department of Transportation

12-19-2016
Date

Table of Contents

	Page
Executive Summary	3
Program Areas	
Planning and Administration	7
Alcohol	8
Motorcycle Safety	12
Occupant Protection	13
Paid Media	17
Pedestrian Safety	20
Police Traffic Services	21
Roadway Safety	23
Safe Communities	24
Traffic Records	28
Highway Safety Funding	29



2016 EXECUTIVE SUMMARY

This FFY 2016 Annual Report describes the progress and outcomes in the Kansas highway safety program. This report will detail activities conducted utilizing federal funding from Safe, Accountable, Flexible, Efficient Transportation Equity Act: A Legacy for Users (SAFETEA-LU), Moving Ahead for Progress (MAP 21) and Fixing America's Surface Transportation Act (FAST). Coupled with Section 402, this report will detail activities tied to these specific program areas: Sections 405 (Occupant Protection Incentive Grant), 408 (State Traffic Safety Information System Improvement Grants), 410 (Alcohol-Impaired Driving Countermeasures Incentive Grants), 1906 (Grant To Prohibit Racial Profiling), 2011 (Child Safety and Child Booster Seat Incentive Grants) and Section 405 detailed in MAP 21 and the FAST Act.

Utilizing the new NHTSA protocol, Kansas recorded an adult seat belt rate of 87.48% in 2016. This is an increase of 5 percent when compared to the 2015 observation number.

The Special Traffic Enforcement Program (STEP) subsidized the cost of three state-wide overtime enforcement campaigns – totaling 5.5 weeks of traffic enforcement – by 120 state and local Kansas police agencies. In the course of 26,935 enforcement stops over 12,132 hours, officers produced 2,619 speeding tickets; 268 arrests for DUI; 470 child passenger safety citations; 327 teen seat belt citations; 17,426 adult seat belt tickets, 69 tickets for texting while driving, and 6,914 other citations and arrests. In addition, STEP continued to provide overtime personnel funding for two enforcement campaigns in the Greater Kansas City area which targeted aggressive driving in the Kansas City metro area and speeding on the K-10 expressway which links Lenexa and Lawrence. The Aggressive Driving campaign consisted of a Saturday enforcement in July and another in August with participation by four police agencies. In these two days alone, the enforcement actions accounted for 318 speeding citations, 201 other driving-related citations, and five arrests. The year-long speed enforcement on K-10, a high volume expressway which connects the city of Lawrence with I-435 in Lenexa, engaged the efforts of all local agencies with enforcement authority on the route, including the Kansas Highway Patrol. Officers issued 845 citations for speeding (10 to 31+ mph over the 70 mph limit). Fully 26%, or 222, of those were for speeds in excess of 85 mph. Of this number, 53 were for speeds in excess of 90 mph, three of which were for speeds exceeding 100 mph. As commonly occurs with speed enforcement, 233 other violations were also observed and cited, with 11 of these resulting in an arrest.

The Impaired Driving Deterrence Program (IDDP) subsidized overtime enforcement by 20 county and municipal police agencies and resulted in 6,397 driver contacts during the course of 19 check lanes and 112 saturation patrols, which combined to net 167 DUI arrests, 28 MIP arrests, 53 TOC citations, and 23 arrests for drug possession. In addition, these late-night enforcements accounted for 784 other citations/arrests and 1,581 warnings. The Kansas Highway Patrol (KHP) was available to assist with check lanes and provided additional roving DUI saturation patrols through the Roving Aggressive Violation Enforcement (RAVE) grant from KDOT. These patrols produced 84 DUI arrests, 7 MIP arrests, 84 arrests for drug possession, and 44 TOC citations.

The Nighttime Seatbelt Enforcement Program (NSEP), in its fourth year, subsidized overtime enforcement by seven police agencies over the course of 661 hours and 1,366 enforcement contacts. This activity resulted in 1,077 occupant restraint citations and, as would be expected from any aggressive nighttime traffic enforcement program, 478 other arrests and citations, including 10 for DUI.

Each year the Kansas Highway Safety Office sponsors two statewide occupant restraint enforcement activities which are non-contractual and purely voluntary on the part of participating agencies. The first, a high school enforcement, occurs over the last week of February and the first week of March with participants asked to commit to at least one hour per week – one-half hour before school and a half hour immediately following

school – in the vicinity of local high schools looking for unbelted teens, but ticketing all observed restraint violations. This year, the campaign ran from February 29 through March 13 and engaged the efforts of 131 police agencies, including the Kansas Highway Patrol. The 665 officers who participated ticketed 83 child restraint violations, 269 teen violations, and 1,141 adult violations, in addition to 674 other citations. A similar school enforcement campaign, focused primarily on younger passengers, occurs in middle and elementary school neighborhoods during a single school week in September. This year, due to scheduling conflicts, the event was moved into the 2017 program year and kicked off October 31. Appropriately, it was named, “Ticket or Treat.”

Kansas consists of 82,277 square miles, making it difficult for KDOT personnel to be in all of the places needed to effectively reach the public with our traffic safety programs. The Kansas Traffic Safety Resource Office (KTSRO) has lightened this load by providing expertise to each program area. With a staff of seven and ½ full time employees, they represent KDOT in the outreach to minorities, large employers, child passenger safety advocates, motorcyclists, and law enforcement. They are responsible for the continued success of the SAFE (Seatbelts Are For Everyone) Program. The KTSRO hosts an Adobe Connect platform, enabling hundreds to take advantage of on-line meetings and trainings. They maintain a user-friendly website, keeping information current and relevant to the public. With one employee totally dedicated to communications, KTSRO maintains a presence on social media pages, as well. They also act as a distribution center, sending thousands of brochures and posters to safety advocates throughout the state.

The Traffic Records Coordinating Committee (TRCC) continues to move forward. Through the TRCC process, numerous state agencies are working together to improve traffic records in Kansas. The Kansas Law Enforcement Reporting System continues to be the main resource for electronic submission of crash reports to KDOT. Currently there nearly 160 agencies authorized to submit crash reports electronically which represents more than 50% of the total crash reports received. The *Report and Police Impaired Drivers (RAPID)* system, has all the District Courts, the city of Wichita municipal court and the Leavenworth County District Attorney’s office submitting dispositions electronically. The system is designed to increase the number of electronic dispositions reported statewide and increase the amount of information to court personnel as they prepare and prosecute the impaired driver.

New in 2016, KDOT contracted with Doug Ballou at Blue Window to assess the contracts we held with various sporting and concert venues, and to begin assuming responsibility for negotiation and management of those contracts. With the target audience of 18-34 year-old men in mind, Doug knew we were definitely in the right venues, and through Blue Window’s valuation strategies, they were able to negotiate with each entity to get added-value activations.

In FFY 2016, the TRSP program provided numerous training classes throughout the state and has responded to dozens of requests from local prosecutors for advice and assistance as they dealt with difficult prosecutions. They worked to keep all prosecutors up to date on new court decisions concerning DUI and other traffic issues. In addition, the program completed the 11th edition of the Prosecutors Resource Book. The Kansas TSRP program is well respected and continues to make an impact on DUI prosecutions and other driver behavior court cases in Kansas. To assist in these endeavors KDOT authorized and funded a 2nd TSRP in 2016.

In September 2016, KDOT conducted an attitude and perception survey to measure the opinions and attitudes of the public concerning driving and safety. Questions were asked about occupant protection, impaired driving and speeding. The responses to this yearly survey, which are highlighted in the Safe Communities section of this report, will assist us in tailoring our messages to the public to receive the biggest impact on improving traffic safety.

KDOT is in the process of updating the Strategic Highway Safety Plan (SHSP) and has been responsible for the formation of many Emphasis Area Teams (EATs) that focus on specific traffic safety areas. In 2016, there were nine active teams that included Data, Occupant Protection, Roadway Departure, Intersections, Teen Drivers, Local Roads, Education, Older Driver and Impaired Driving. The mission of the SHSP is to drive strategic investments that reduce traveler casualties, and the emotional and economic burdens of crashes utilizing the four E's (education, enforcement, engineering and EMS) in a collaborative process.

To address the rising concern of vehicular speeding and the uptick in traffic fatalities across the nation, Kansas participated in a multi-state three-day speed enforcement mobilization. This was a NHTSA Region 7 initiative that included the state of Oklahoma. The mobilization period was September 23rd - 25th. During this period law enforcement agencies across Kansas volunteered to conduct non-overtime speed enforcement and Motor Carrier speed enforcement mobilizations. Media outlets were invited to attend an event in Kansas City announcing this activity on September 22nd. The Highway Patrol Superintendents or Command Staff members from every state attended this media event, a rare occurrence in law enforcement. Kansas issued 1,436 speeding citations with 52 law enforcement agencies participating. Regionally, 226 agencies issued 7,377 speeding citations and a total of 10,680 citations.

In FFY15 a partnership was forged to establish a legally acceptable Roadside Oral Fluids Testing Program in Kansas. Partner agencies included KDOT, Kansas Attorney General's Office, Sedgwick County Regional Forensics Crime Laboratory, Sedgwick County Attorney, Kansas Highway Patrol, and the Sedgwick County Sheriff's Office. Committee members met throughout FFY15 and into FFY16 establishing goals and outcomes of the Oral Fluids Program and also performed a needs assessment and product research for the field testing instrument. Dr. Christine Moore from Immunalysis Labs in California agreed to assist with study methodology, protocols and perform confirmation blood tests on test subjects. The Alere unit was selected as the test instrument because it was the only unit that met all the standards the committee established. Fred Delfino from Alere came to Wichita and trained the committee on operating the handheld units and KDOT purchased two units for the study. The field testing study was conducted and concluded in FFY16 with results pending from the researchers. As soon as the research findings are finalized there will be a report out and then development of field testing protocols and training of select law enforcement officers and prosecutors. Roll out to the entire state of Kansas is projected to be mid FFY17.

2016 Performance Measures

	Core Outcome Measures	2015 Actual	2016 Trend Projection	2009-13 Baseline*	2016 HSP Goal
C-1	Number of Traffic Fatalities (FARS)	355	371	392	363
C-2	Number of Serious Injuries (KCARS)	1,181	1,491	1,602	1,445
	Serious Injury Rate per 100 million VMT (KCARS)**	3.834	4.960	5.336	4.836
C-3	Fatalities/VMT (FARS/FHWA)**	1.153	1.236	1.305	1.213
	Rural Fatalities per 100 million VMT (FARS/FHWA)**	1.862	2.144	2.144	2.123
	Urban Fatalities per 100 million VMT (FARS/FHWA)**	.499	.457	.502	.452
C-4	Number of unrestrained fatalities all positions (FARS)	127	155	169	154
C-5	Number of Fatalities in Crashes Involving a Driver or Motorcycle Operator, with BAC of .08 or higher (FARS)	84	126	114	113
C-6	Number of speeding fatalities (FARS)	128	102	107	101
C-7	Number of motorcyclist fatalities (FARS)	44	39	43	38
C-8	Number of un-helmeted motorcyclist fatalities (FARS)	28	27	28	26
C-9	Number of Drivers, 20 and Under, Involved in Fatal Crash (FARS)	60	52	66	51
C-10	Number of pedestrian fatalities (FARS)	24	18	20	17
C-11	Number of bicycle fatalities (FARS)	3	4	4	3
	Core Behavior Measure				
B-1	Observed seat belt use (FFY 15 State Survey)	82	87	86	88
	FFY 16 Activity Measures				
A-1	Number of seat belt citations issued during grant-funded activities	19,560			
A-2	Number of impaired driving arrests made during grant-funded enforcement activities	532			
A-3	Number of speeding citations issued during grant-funded enforcement activities	4,737			
	Kansas Specific Measures				
	Distracted Driving Crashes (KCARS)	15,571	10,319	15,063	10,243

* 5-year moving average

** 2014 VMT rates, 2015 Fatalities

Planning and Administration

Strategies

- Provide resources that allow staff to receive additional training opportunities in-state and out-of-state by organizations dedicated to traffic safety issues.

Project Summaries

Section 402

PA-0918-16

Traffic Safety Section Staff Travel & Training Costs

\$18,378

These funds allowed Section staff to attend many training opportunities, including the Governor's Highway Safety Association Annual Meeting, NHTSA Regional Meeting, the Traffic Safety Resource Prosecutors' Conference, Traffic Records Forum, training at the Kansas Law Enforcement Training Center (KLETC), many law enforcement recruitment luncheons and other Section-sponsored events.

Alcohol

Strategies

- Provide Evidentiary Breath Testing Instruments to local law enforcement agencies across Kansas.
- Provide locals with training and resources for conducting sobriety checkpoints.
- Recruit additional local participation in the Impaired Driving Deterrence Program (IDDP).
- Increase the amount of paid media dedicated to reducing impaired driving and teen access to alcohol.
- Underwrite education for court system personnel on impaired driving laws and techniques used in removing impaired drivers.
- Maintain the number of Drug Recognition Experts in the state and provide opportunities for officers to maintain their certification, and recruit additional DREs located in areas of high alcohol-related crashes and arrests.
- Increase the number of A.R.I.D.E. certified officers in the state concentrating on areas where there are higher than average occurrences of alcohol/drug related crashes.
- Provide education for high school students on the dangers of impaired driving.
- Provide materials and activities aimed at pre-teen prospective drivers (ages 12-14) to begin educating them about the risks of alcohol use and its effect on safe driving.

Project Summaries

Section 410

AL-0841-16

KDHE Breath Testing

\$3,400

This contract provided travel and training to the staff at the Kansas Department of Health and Environment Breath Alcohol Unit for state-wide training related to the upgrade in evidentiary breath testing instruments.

AL-9108-16

Impaired Driving PI&E

\$5,220

In support of our roadside oral fluid project, this contract engaged Interim Health Services to conduct blood draws on subjects. Coupled with DRE evaluations and instrument testing, this information will assist the state in evaluating and moving forward with protocols, procedures and an instrument for road side testing of suspected impaired drivers.

Section 402 Youth Alcohol

YA-0969-16

Underage Drinking PI&E

\$9,023

This funding source handled costs associated with KDOT's underage drinking tip line and web site. These include: 1) AT&T user fees for automatic greeting, switched toll-free routing, and two dedicated voice lines out of the Kansas Highway Patrol Central Dispatch Center for the 1-866-MUST-B-21 underage drinking tip line; 2) fees for primary and alternate domain names for the 866MUSTB21 web site; and 3) annual fee for services of web site builder, Squarespace.

YA-1140-16

Teen Angel

\$13,606

This initiative was mounted by Overland Park Police Department to enforce underage alcohol laws during the period, June-September. Participating officers worked 254 overtime hours, typically in pairs during 5-6 hour shifts. Enforcement actions included six house parties checked – four of which were broken up – 22 juvenile calls for service, 62 juvenile contacts, 26 parent contacts, 22 checks of retail alcohol establishments, 57 general business checks, and 38 park checks. These actions produced 28 non-traffic impairment-related arrests, 13 of which were for MIP and 15 for drug possession. Thirty-two traffic stops yielded two adult DUI arrests and one minor DUI arrest along with 51 assorted arrests and traffic citations.

YA-1183-16, YA-2227-16 **Stampede Enforcement** **\$14,598**

Annually, more than 120,000 people are drawn to the Kicker Country Stampede, four-day music/camping festival held over the last full weekend of June. Because of the large number of juveniles at the event – especially in the state park camping areas - there has, historically, been a high incidence of underage drinking with attendant disorderly behaviors. This grant provided for overtime enforcement of underage drinking laws and DUI-apprehension by Pottawatomie County Sheriff’s Office and Alcoholic Beverage Control at the event. The agencies combined to make 72 arrests for MIP during the event in addition to 18 other alcohol- and drug-related arrests, most of them in the camping areas.

YA-2227-16 **Alcoholic Beverage Control** **\$8,097**

While Stampede offers arguably the biggest draw to underage drinkers in Kansas, across the state there are numerous other regional and local events which also tend to attract underage drinking. In addition, there are a multitude of local liquor/CMB retailers and bars which are only rarely, if ever, receive compliance checks, often due to insufficient staffing on the part of local police agencies or ABC. This grant enables local ABC agents to mount an effective law enforcement response by being able to call in other agents to assist with events and compliance checking. In 2016, operations were mounted at five locations: KU’s Stop Day Eve student celebrations in Lawrence, the SW Country Fest in Hardtner, the Luke Bryan concert at Sandstone in Bonner Springs, the Avenge 7 Fold Concert at Providence Medical Amphitheater in Bonner Springs, and Dodge City’s Operation Clean Sweep. The five enforcements yielded 32 MIP arrests, one Fake I.D. arrest, one furnishing citation, along with 25 retail/bar checks resulting in 16 violations. Operation Clean Sweep involved ABC support of Dodge City PD and yielded 72 controlled buy checks resulting in 11 citations. This grant also covered the purchase of 56,000, keg tags.

YA-2300-16 **Fake ID** **\$16,183**

FakeID 101 is a project based on the philosophy of the “Click it. Or ticket.” Mobilization. This innovative program combines education along with enforcement and media to build public awareness of the issues surrounding underage drinking in a specific area. The project targets university towns using community and school members to educate about underage drinking and local law enforcement including Alcohol Beverage Control, University, city and county law enforcement to provide alcohol awareness and targeted enforcement. Education includes server and liquor establishment trainings along with university activities to bring awareness to the underage population. The enforcement spans routine dui enforcement along with targeted enforcement of liquor establishments, social hosting, underage drinking parties and university sporting events.

YA-8500-16 **Youth Leadership Summit** **\$97,522**

The Summit, produced by Kansas Family Partnership, aims to build the capacity of local teams of high school students to address dangerous behaviors by peers in their home communities and to partner with various community sectors of influence, such as law enforcement and media, among others, to make lasting changes. An action plan process, with on-going adult mentoring by experienced adults, is employed to guide each team’s activities over the upcoming school year. This year’s event took place July 31st through August 2nd at a remote location out of cell phone range, and attracted 23 student teams, comprised of 8 to 12 students each, from across the state, as well as their adult sponsors plus 23 youth trainers (many of whom were Summit alumni) and 23 adult trainers. The agenda included a variety of workshops tied to traffic safety.

Section 405(d)

AL-4700-16 **Alcohol PI&E** **\$3,886**

This contract supported efforts at Butler County and Kansas State targeting the impaired driver. It also paid for travel expenses to a meeting for Oral Fluid DUID conference.

AL-4702-16 **KDHE Intoxilyzer 9000** **\$1,100,000**

The Kansas Department of Health and Environment (KDHE) is statutorily authorized to administer the Breath Alcohol Program in Kansas. They provide at no charge evidentiary breath testing instruments to roughly 250 local law enforcement agencies in Kansas. In 2016 KDHE requested KDOT partner with them to purchase all new breath testing instruments to replace the aging Intox 8000 units. KDHE paid for half and KDOT paid for half. There was a rigorous vetting process with multiple vendors and the Intox 9000 was chosen to be the new instrument. KDOT Law Enforcement Liaisons assisted with the training of all certified Breath Test Administrators across Kansas. The next phase is to enable all instruments to be connected to the internet for report submission, instrument QC checks, and statistics.

AL-IDDP-16 **Law Enforcement IDDP Patrols** **\$115,106**

The Impaired Driving Deterrence Program (IDDP) subsidized overtime enforcement by 20 county and municipal police agencies and resulted in 6,397 driver contacts during the course of 19 check lanes and 112 saturation patrols, which combined to net 167 DUI arrests, 28 MIP arrests, 53 TOC citations, and 23 arrests for drug possession. In addition, these late-night enforcements accounted for 784 other citations/arrests and 1,581 warnings.

AL-9102-16 **Kansas Highway Patrol R.A.V.E. Program** **\$135,983**

The Kansas Highway Patrol West, Central and East regions executed 91 Roving Aggressive Violation Enforcement (RAVE) saturation deployments and sobriety checkpoints across the state in FFY 16. These deployments resulted in 4,823 stops, 675 speeding citations, 84 DUI arrests, 7 MIP (minor-in-possession) arrests, 44 TOC (transporting-open-container) arrests, and 84 arrests for drug possession. In addition, 18 warrant arrests and 41 felony arrests were made and 131 safety belt citations and 26 child restraint citations were issued.

AL-9106-16 **Kansas Highway Patrol Breath Alcohol Unit** **\$360,620**

The Breath Alcohol Unit (BAU) provided support resources for local sobriety checkpoints and saturation patrols. In addition, the BAU provided support for the statewide Standardized Field Sobriety Testing (SFST) and Advanced Roadside Impaired Driving Enforcement (ARIDE) training programs. The SFST advisory panel met twice during the contract year to coordinate statewide improvements to the program. Training in SFST, ARIDE, Preliminary Breath Testing and the Intoxilyzer 9000 strengthened the detection and apprehension skills of the officers, both during sobriety checkpoints and in other targeted traffic enforcement.

State-wide training was greatly expanded with the upgraded Intoxilyzer 9000 in FFY2016 instrument replacing the 8000 instruments with free training provided for over 250 law enforcement agencies. SFST training was completed by 500 officers, while 400 officers were instructed in the ARIDE program (up 300 from 2015).

The KHP also coordinates the Drug Recognition Expert Program (DRE) program, targeting metropolitan and major corridor areas. Ten law enforcement personnel attended DRE Certification Training in Maricopa County Arizona (Phoenix). This brings the total of DREs in Kansas to 89 representing 23 law enforcement agencies. That is up five (5) from FFY2015. There were 411 DRE evaluations conducted in Kansas and eight who refused to test (not counted in total). There were four where no drugs were detected and 109 positive for stimulant and 101 positive for depressant. There were 65 positive for Narcotic Analgesic and 104 for Cannabis. Also there were six positive tests for Dissociative Anesthetics, four for inhalant and 18 as a Alcohol Poly Drug.

KHP completed four SFST Training classes and supported 21 Local SFST classes. They put on 25 (Up from four in FFY16) ARIDE classes and supported one Prosecuting Attorney/Law Enforcement Seminar held in Wichita with 100 in attendance. The seminar covered various topics ranging from toxicology issues to alcohol influence report writing. The unit also tracked the results of alcohol enforcement operations conducted by

various law enforcement agencies throughout the state. The 150 saturation patrols and 50 checkpoints tracked by the BAU unit resulted in 14,000 contacts and over 300 DUI arrests.

AL-9400-16 **DUI Victim Center of Kansas** **\$217,403**

This grant underwrites two programs aimed at reducing the likelihood of DUI recidivism. Court Watch monitors DUI trials, sentencing- and probation violation-related activities, in addition to drivers' license (DL) suspension hearings in the Greater Wichita area. DUI Victim Impact Panels brings small groups of court-ordered offenders face-to-face with victims of impaired driving. Court Watch volunteers and staff monitored and reported on 329 court-ordered non-probation activities, 128 probation violation hearings, and 951 DL suspension hearings. Fully 2,505 offenders attended 64 victim panels in 13 locations – ranging from Dodge City through the Wichita area and up to Hays and Lawrence – utilizing 822 hours of local volunteer assistance. Panels in the Greater Wichita area were offered in both English and Spanish.

AL-9407-16 **Traffic Safety Resource Prosecutor** **\$205,955**

Kansas began its Traffic Safety Resource Prosecutor (TSRP) program in March 2008, partnering with the Kansas Attorney General's Office. It began with Karen Wittman being hired as the first TSRP. During her eighth contract year (FFY16), Ms. Wittman has been extremely busy, having established herself as the go to Kansas Traffic Safety Resource Prosecutor. She instituted a DUI Boot Camp, which is training for Prosecutors who specialize in DUI prosecution and many other forward thinking programs enumerated below. Knowing she could not do it alone, in FFY15 a second TSRP was hired and together with Greg Benefiel they conducted the 8th Annual Boot Camp on May 10th & 11th, 2016 at the KHP Academy in Salina, Kansas. This Boot Camp included new instruction for DUID (Driving Under the Influence of Drugs). Between the two TSRP's they conducted 39 trainings across Kansas, reaching more than 700 people throughout the year. Training attendees included law enforcement, prosecutors and other court personnel. The trainings focused on blood draws, criminal refusal, underage drinking and many other traffic safety topics. Specific to FFY2016 the Kansas Supreme Court ruled it unconstitutional to have penalties for refusing an evidentiary alcohol test. They worked in a flurry to change the Implied Consent Forms used for both Administrative and Criminal Hearings to make the language constitutional under the new ruling. They have also trained, researched, and coached extensively across the state for *Daubert* challenges when the Defense requests a hearing on a claim that part of the States' evidence does not meet the requirements of an expert witness. Karen has updated her comprehensive Kansas DUI Law book (Eleventh Edition) which has been distributed to prosecutors statewide in January 2016. Greg Benefiel has taken over responsibilities for producing and distributing weekly TSRP newsletters and produced 52 in FFY16. Greg also took over for Karen who served as a member of the SFST and Breath Alcohol advisory committees and is Chairperson of the Impaired Driving Emphasis Area Team. Both Greg and Karen have assisted in NO REFUSAL NIGHTS where blood draws are done on all DUI refusals after securing search warrants (Revived in FFY15 and carried on into FFY16). Greg has taken on these duties because Karen resigned her TSRP position in April 2016 and the search is on-going for a qualified candidate.



Motorcycle Safety

Strategies

- Promote safe motorcycle driving initiatives.
- Promote motorcycle awareness activities.
- Promote impaired riding prevention initiatives.

Project Summaries

Section 405(f)

MC-4800-16

Motorcycle Safety PI&E/Media Campaign

\$22,412

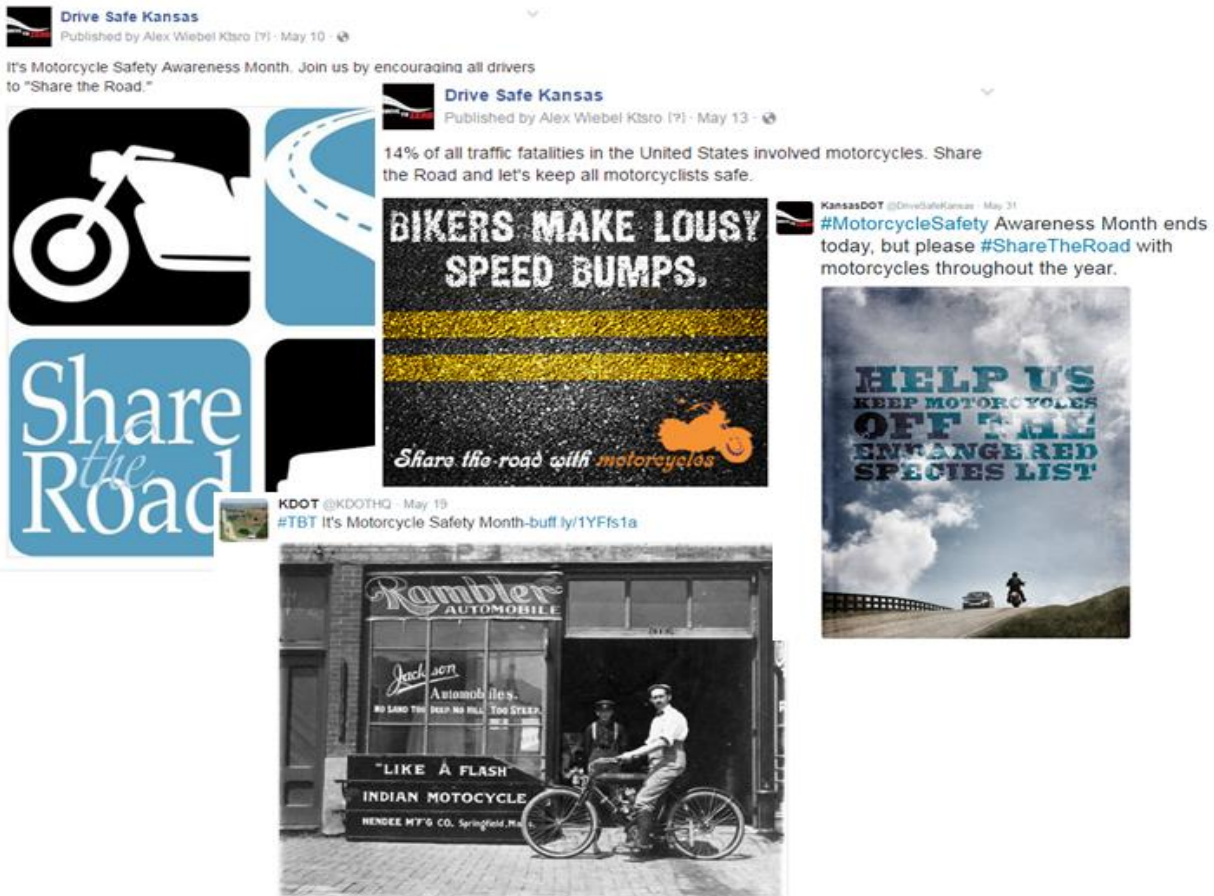
In 2016, KDOT placed radio spots in Wyandotte, Shawnee, Douglas, Leavenworth and Sedgwick Counties, as well as in many rural areas. JNA Advertising also negotiated many added-value opportunities for our Share the Road message to be promoted at local dealerships and community events where a large motorcyclist population would be present.

MC-4801-16

Kansas Traffic Safety Resource Office

\$15,334

The Kansas Traffic Safety Resource Office (KTSRO) maintained and organized the Motorcycle Safety Task Force for KDOT's Traffic Safety Section by providing educational materials and programs aimed at reducing motorcycle crashes, injuries and fatalities in Kansas. KTSRO also utilized NHTSA's marketing suggestions on the DriveSafeKansas social media platforms. From this particular fund, KTSRO distributed items with Share the Road messaging at motorcycle shows, fairs, and many other events statewide. The funding also paid for instructor training.



Occupant Protection

Strategies

- Provide statewide occupant protection public education and information through media campaigns in conjunction with law enforcement mobilizations and special corridor activities – English and Spanish.
- Continue to provide Child Safety Seats statewide in recognized distribution/fitting stations for low-income families.
- Continue Adult/Child Safety Belt Surveys, and Boosters to Belts education statewide through presentations, brochures etc.
- Provide statewide media awareness campaign on occupant protection.
- Support Child Passenger Safety (CPS) Training using the current NHTSA standardized curriculum.
- Use seatbelt survey results to target problem areas of the state.
- Continue to promote awareness of Primary Seat Belt Law passed in 2010.

Project Summaries

Section 402

OP-0930-16

Public Information and Education

\$33,780

These funds were used for the law enforcement recruitment lunches for the Click It or Ticket campaign. The OP Assessment expenses were also paid through these funds.

OP-1306-16

Child Passenger Seat Distribution

\$97,198

More than 1,700 child safety seats (convertible and booster) were distributed statewide to child passenger safety inspection stations through this project. These seats were provided to low income families.

Section 405

OP-1425-16

Public Information and Education

\$1,726

These project funds were used for extended-season booster seat advertising at Kansas State University.

OP-1651-16

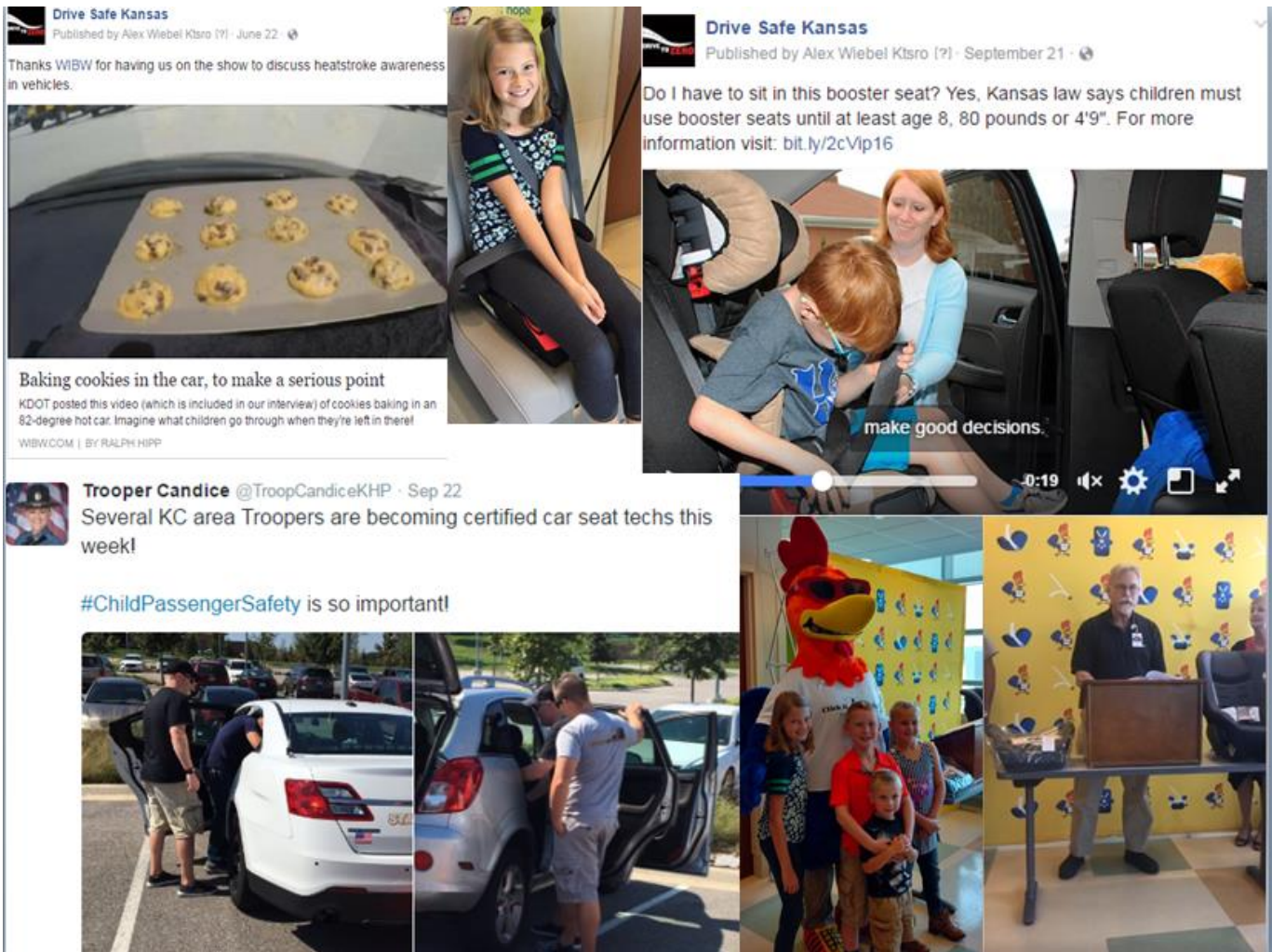
CPS Events

\$48,000

KDOT contracted with Trozzolo Communications to provide CPS events in Harvey, Shawnee and Wyandotte Counties in the spring; Finney, Ness, Shawnee, Pottawatomie, Dickinson, Harvey and Sumner Counties in late July through August. The ten 90-minute Bucklepalooza events were promoted through social media, digital advertising, and fair websites. An estimated 1,450 participants were exposed to the buckle-up messages, along with many parents and by-standers. Pictures were posted on Facebook after the events, and this use of social media resulted in many new exposures to our traffic safety message.



- KTSRO hosted the annual CPST Update class, free to any technicians in the state, providing CEUs to 150 technicians. They coordinated with KDOT to have the Technical Update videotaped. This has been made available on the KTSRO website, providing more than 140 CEUs for technicians.
- KTSRO collaborated with multiple agencies to develop a Child Care Tool Kit, and in 2016, enabled 47 daycare providers to receive CEUs.
- KTSRO attends national conferences and has representation on the Kansas Safe Kids board of directors, as well as with KDHE's Injury Prevention Consortium, Safe Communities, Operation Impact, Regional Preventions Centers, the KDOT Strategic Highway Safety Plan occupant protection team, and many other organizations across the state.
- KTSRO provided valuable assistance in coordinating social media promotions with the KHP, KDHE, Safe Kids, and KDOT for NHTSA's Heatstroke Prevention campaign, CPS Week, and many other social media opportunities throughout the year.



OP-NSEP-16

Nighttime Seat Belt Enforcement

\$22,161

The Nighttime Seatbelt Enforcement Program (NSEP), in its fourth year, subsidized overtime enforcement by seven police agencies over the course of 661 hours and 1,366 enforcement contacts. This activity resulted in 1,077 occupant restraint citations and, as would be expected from any aggressive nighttime traffic enforcement program, 478 other arrests and citations, including 10 for DUI.

OP-2316-16**Seat Belt Survey****\$252,653**

The fifth year under the 2011 NHTSA seat belt survey protocol, we noted a five percent increase in adult seat belt usage over 2015. Kansas achieved an 87.48% adult occupant protection rate in 2016. Women are more likely to be belted than men. Trucks, which account for a little more than one in five vehicles observed, produce a substantially lower belt use rate (79%) than other vehicles (90%-93%), and male truck drivers are the lowest single category of belt users (78%). Just over 90% of interstate drivers use their seat belts but local road drivers were buckled 83% of the time. The survey found 93% of van drivers but only 78% of truck drivers were buckled. Similar to last year's observation: with a belted driver, about 98% of front passengers were also belted but if driver is not belted, only about 24% of front passengers were belted. Males, though they represent about half the population, are drivers in about 61% of the observed vehicles, while about 39% of the drivers were female.

OP-4501-16**Public Information and Education****\$1,893**

These project funds were used to supplement CIOT advertising on Pandora, and to purchase a special-needs seat for a child whose family has limited income.



Paid Media

Strategies

- Advertise seatbelt & impaired messages during sporting events at the state's three Division I colleges.
- Advertise at special events/venues in KS to reach target audiences for seatbelt and impaired messages (i.e. Country Stampede and Hummer Sports Park).
- Continue and expand our media messages during the national mobilizations.
- Utilize media during specialized enforcement activities.
- Continue motorcycle awareness media.
- Implement non-traditional media methods, such as banner ads on internet, gaming websites, and social media.

Project Summaries

Media Rationale for all Mobilizations

The advertising objective of all campaigns is to produce high levels of reach and frequency to reach potentially high risk drivers and convince them to abide by the traffic laws. The primary target audience was the 18-34 year old male, with a secondary target of adults 18 and over. The Hispanic audience was also targeted to build awareness.

Section 402

PM-1501-16

General/Sporting Venue Advertising

\$71,419

KDOT partnered with several different groups in 2016 to promote safe driving behaviors, including Wichita Thunder, Wichita Wingnuts, and high school sports in Topeka. These groups were contracted to air radio spots and provide venue signage promoting seat belt use, prevention of impaired driving and distracted driving messages. This funding was also used to promote Put the Brakes on Fatalities Day. KDOT partnered with the Kansas Insurance Commissioner and Miss Kansas to support a *Don't Text #JustDrive* campaign on college campuses, which was funded through this contract.

PM-1516-16

Mid America Regional Council Radio

\$17,049

In 2016, MARC secured 433 (including 62 at no charge) radio spots to promote safe driving behaviors. These spots were run in the Greater Kansas City area, targeting the traveling public, specifically, 18-34 year old males, on the topics of impaired driving, seat belts, pedestrian safety, aggressive and distracted driving. Advertising was also secured on Facebook (74,319 impressions) and Twitter (1,092,870 impressions and 650 clicks). The campaign ran from June through September, supplementing a campaign conducted by MoDOT from October through May.

Section 405(b)

OP-1475-16

Thanksgiving/Holiday Mobilization

\$29,939

KDOT utilized a combination of online media combined with a radio buy for this mobilization. There were a total of 1,479 spots run, including 662 free. The pre-roll video netted more than 1,986,700 impressions, resulting in 1,340 click-throughs.

OP-1475-16

Click it. Or Ticket

\$200,057

Approximately 4,600 cable and 650 network spots were run state-wide, including 91 spots on Spanish TV stations in Kansas City, Topeka and Wichita. About 2,700 radio spots were purchased, including testimonials from popular disc jockeys, and our media contractor, JNA, negotiated for KDOT to have a presence at special events such as Topeka's Cruise Night, with attendance estimated at 50,000, where brochures were distributed.

In addition to traditional media, KDOT utilized digital media targeting 18-34 year-olds, with a secondary target of high school students. Through online banner ads, preroll video, Pandora, and social media campaigns, more than 5 million gross impressions were delivered, resulting in thousands of reactions, comments, and clicks to the KTSRO website. A video produced by JNA Advertising showcased the CIOT campaign, featuring a teen whose boyfriend was left forever changed from a crash where he was not wearing a seatbelt. This video garnered nearly 60,000 unique views, and has been used throughout the year on KDOT social networks.

Section 405(d)

AL-XXXX-15

Blue Window and University Marketing

\$457,984

Through these contracts, KDOT reached their target audience of men, ages 18-34 where they can be reached most effectively: sporting and concert venues. A mix of digital media, social media, stadium and parking lot signage, IPTV networks, radio ads, coach/player PAs, field level LED, and in-stadium activations were utilized in each venue. This year's network of partners included:

- Professional:
 - Sporting KC Soccer
 - KC T-Bones Baseball
 - Wichita Thunder Hockey
 - Wichita Wingnuts Baseball
 - KS Professional Rodeo Association
- Collegiate:
 - University of Kansas
 - Kansas State University
 - Wichita State University
 - Butler County Community College
- Amateur Sports:
 - Johnson County Parks & Recreation
 - Topeka Hummer Sports Park
 - Vype magazine
 - Local Radio high school sports
- Motor Sports:
 - Professional, Semi-pro, and amateur motorsports tracks across Kansas
 - KS State Fair Demolition Derby
- Concerts:
 - Country Stampede



AL-4701-16

Impaired Driving Media Campaign

\$194,378

Utilizing a new ad for the 2016 Impaired Driving/Riding Crackdown, KDOT's buy consisted of 3,839 radio spots, and 4,076 TV spots. Additionally, KDOT ran digital billboards in Kansas City, Wichita and Topeka, with an estimated 2.5 million impressions. Online ads produced more than 85K completed video views and 427K impressions. Another one million impressions were delivered on Pandora. Promoted posts on social media resulted in approximately 108k impressions. A new placement on in-bar juke boxes, where patrons could play a short trivia game to get a free play, resulted in more than 1.7 million impressions, and most importantly, led to more than 300 cab numbers sent to patrons' cell phones.

Section 2011

OP-XXXX-16

Public Information and Education

\$45,882

This year, KDOT produced new booster seat radio ads. These funds were used to place radio spots during CPS week (365 paid plus more than 120 bonus spots), as well as to reach their target audience on Pandora (381,000 impressions) and Facebook (49,600 impressions, with 1,300 post engagements). Funding also paid for CPS marketing at K-State and University of Kansas.

Pedestrian & Bicycle Safety

Strategies

- Maintain clearinghouse of child and adult bicycle brochures to distribute upon request.
- Maintain clearinghouse of child and adult pedestrian brochures to distribute upon request.
- Provide promotional items for the Annual Walk Your Child to School Day.

Project Summaries

Section 402

PS-0932-16

Public Information and Education

\$1,621

As part of the Put the Brakes on Fatalities Day promotions, children from across the state were encouraged to submit their ideas on how to reduce fatalities. The winners of the poster contest were awarded a bicycle for their creativity and effort.

PS-1131-16

Bike Helmets

\$14,994

KDOT partnered with the Kansas Department of Health and Environment to promote bicycle helmet use. Local Kansas agencies were encouraged to apply for free helmets to be distributed in conjunction with their bicycle safety events. A total of 2,525 helmets were purchased and distributed statewide.

PS-1132-16

Bicycle and Pedestrian Safety

\$4,000

KDOT partnered with the City of Wichita to promote better compliance with City Code Section 11.48.09 (requiring lights or reflectors) and Section 11.48.160 (requiring audible signal before overtaking and passing a pedestrian). The project purchased and distributed bicycle lights, bicycle bells and educational materials.



Police Traffic Services

Strategies

- Continue to provide grants to law enforcement agencies for overtime enforcement of adult, teen, and child safety restraint violations through the Special Traffic Enforcement (STEP) and Nighttime Seatbelt Enforcement (NSEP) Programs, targeting additional agencies in the counties with the highest number of unbelted fatalities and serious injuries, and those counties with a low seat belt usage rate.
- Provide funding for local law enforcement to attend training on the latest techniques of traffic enforcement.
- Continue to promote the enforcement of occupant restraint and alcohol DUI law in each of Kansas' 105 counties in around the state.
- Continue supporting our four LELs across the state.

Project Summaries

Section 402

PT-0931-16 Local Law Enforcement Equipment Acquisition and Training Program \$505,932

The bulk of these funds are directed at meeting the needs of local law police agencies for traffic enforcement-related products. Allowable products include items such as radars/LIDARs; preliminary breath testers; cones, flares, measurement devices, cameras, training opportunities, e-ticket subscriptions, and tire deflation equipment. With a few exceptions, these funds are tied to the equipment and training acquisition program that accompanies the Memorial Day Click it or Ticket campaign. Police agencies must average at least two occupant restraint tickets per hour of enforcement across the two weeks of the campaign to qualify for the program. It is not uncommon for this program to be the principal means by which an agency acquires traffic enforcement products, especially large-ticket items.

PT-0938-16 Local Travel & Training \$32,722

These funds enabled KDOT to send three traffic safety advocates to the Lifesavers Conference, two to attend child passenger seat training and four officers to crash data retrieval technician school. In addition, ten judges attended the ABA Traffic Court Seminar in San Antonio in March.

PT-1708-16 Crash Reconstruction \$26,700

In June of 2016, the Kansas Highway Patrol conducted a crash reconstruction course in Salina. Thirty officers attended and completed the training.

PT-LELs-16 Law Enforcement Liaison (LEL) \$257,031

To better meet the challenge of effectively serving a law enforcement community of over 350 diverse agencies spread across 82,264 square miles, KDOT employs a team of four LEL's (3.75 FTE). These professionals – all of them retired law enforcement officers – promote KDOT's safety programs to law enforcement and advice on their application, as well as on traffic enforcement tactics and methodologies, in general. They also work to build collaborations between the law enforcement community and other sectors, such as school districts and the media; in an effort to advance the safety messaging that is complementary to effective enforcement strategies.

OP-STEP-16 Special Traffic Enforcement Program \$575,862

The Special Traffic Enforcement Program (STEP) awards grants to local law enforcement agencies and the Highway Patrol to conduct overtime enforcement campaigns directed at compliance with Kansas safety belt, child passenger safety, speed, texting and impaired driving laws. Enforcement activities utilized saturation patrols and checkpoints during three mobilizations, ranging from 1 week to 2.5 weeks in length. Each was

primarily focused on either occupant restraint, DUI, or both, with secondary emphases on texting and speed, and each was tied to a major travel holiday – Thanksgiving, Memorial Day, and Labor Day. During FFY 2016, in the course of 26,935 enforcement stops over 12,132 hours, officers produced 2,619 speeding tickets; 268 arrests for DUI; 470 child passenger safety citations; 327 teen seat belt citations; 17,426 adult seat belt tickets, 69 tickets for texting while driving, and 6,914 other citations and arrests.

In addition, STEP continued to provide overtime personnel funding for two enforcement campaigns in the Greater Kansas City area which targeted aggressive driving in the Kansas City metro area and speeding on the K-10 expressway which links Lenexa and Lawrence. The Aggressive Driving campaign consisted of a Saturday enforcement in July and another in August with participation by four police agencies. In these two days alone, the enforcement actions accounted for 318 speeding citations, 201 other driving-related citations, and five arrests. The year-long speed enforcement on K-10, a high volume expressway which connects the city of Lawrence with I-435 in Lenexa, engaged the efforts of all agencies with enforcement authority on the route, including the Kansas Highway Patrol. Officers issued 845 citations for speeding (10 to 31+ mph over the 70 mph limit). Fully 26%, or 222, of those were for speeds in excess of 85 mph. Of this number, 53 were for speeds in excess of 90 mph, three of which were for speeds exceeding 100 mph. As commonly occurs with speed enforcement, 233 other violations were also observed and cited, with 11 of these resulting in an arrest.

Roadway Safety

Strategy

- Continue support of local and state officials to provide safer and enhanced roadways through training and materials.

Project Summaries

Section 402

RS-1402-16

Kansas State University

\$99,982

The Traffic Assistance Services for Kansas (TASK) program provides economical training for Kansas public employees who have traffic safety responsibilities. In 2016, 91 local officials were trained at several different sessions across the state.

Safe Communities

Strategies

- Promote and conduct annual statewide conference on highway safety issues.
- Solicit and promote community-based traffic safety programs in Kansas.
- Improve information and resource availability for local agencies and advocates in Kansas.

Project Summaries

Section 402

SA-0915-16

Kansas Traffic Safety Resource Office

\$700,237

The Kansas Traffic Safety Resource Office (KTSRO) administers and implements statewide programs providing public education, information, technical assistance, research and evaluation aimed at reducing the incidence of crashes caused by alcohol/drug impairment, distractions, speed, and other risky driver behaviors, while increasing seat belt use in Kansas. KTSRO worked closely with KDOT's Traffic Safety Section, law enforcement, minority organizations, employers, Safe Kids Kansas, and other safety advocates around the state to achieve these goals.

Some of the highlights in 2016 include:

- The SAFE (Seatbelts Are For Everyone) program completed another extremely successful year. Now in its 8th year, SAFE has grown from six schools in one county to 142 schools in 62 counties, reaching more than 57,000 students across Kansas. SAFE increased its following on both Twitter and Facebook by about 350 followers/fans. This program deserves much of the credit for the increase of observed teen seatbelt use in Kansas from 61% in 2008 to 86% in 2016.
- KTSRO updated or designed and distributed more than 715,000 educational items. Whenever possible, items are produced with English on one side, Spanish on the other. These items are primarily used by law enforcement and other safety partners as an outreach to the traveling public.
- With one full-time employee at KTSRO devoted to communications, KDOT increased its following on Twitter by more than 4,600 and on Facebook by 840. More than 6,000 safety advocates were reached monthly through newsletters or single-topic informational blasts. The SAFE, CarFit, and CPS programs sent newsletters to their advocates each month, extending KDOT's reach even further.
- KTSRO hosted online trainings, with nearly 300 completed courses. They also registered about 1,900 participants for various in-person trainings.
- Staff members at KTSRO continued their leadership roles on the Strategic Highway Safety Plan updates for for all behavioral safety issues.

SA-0943-16

Kansas Transportation Safety Conference

\$121,223

The 22nd annual Kansas Transportation Safety Conference (TSC) was held at the Capital Plaza in Topeka, April 18-20. The conference attracted 459 registrants, an increase of 80 since the 2014 TSC in Topeka. The TSC included four pre-conference in-service professional courses, three general session presentations, 18 workshops, and 34 speakers, all focused on four tracks: youth, law enforcement, injury control, and roadway safety. The 23 exhibits were positioned around the general sessions/lunch area providing exposure to the latest transportation safety equipment, programs, and technology. The closing luncheon included announcement of the annual People Saving People awards: Karen Wittman, Norraine Wingfield, Brown County Sheriff Merchant, Addie Evans, and Katelyn Burkhart.

KDOT's new media contractor, John Nohe & Associates LLC (JNA) worked closely with KDOT in the planning of a comprehensive media campaign. JNA coordinated all of the media buys and two media events for the enforcement mobilizations, developed the earned media releases, and provided detailed evaluations on all media buys. JNA also advised and supported the KTSRO's social media efforts. New TV and radio spots were created for the You Drink, You Drive, You LOSE campaign.

ETC Institute conducted a survey of residents in the State of Kansas, during September of 2016. This year's survey results were very similar to the survey administered in 2015. The purpose of the survey was to gain input from residents regarding perceptions of safety.

Major Findings:

- Residents were asked their opinion of what was most likely to cause a traffic crash; 90% of respondents indicated *texting on cell phone* was the most likely cause. Other reasons include: Drunk driving (67%), speeding (50% - compared to 27% in 2015) other driver distractions (31%), and talking on cell phone (20%).
- Residents were asked what they thought was the most serious distraction for drivers; 94% of respondents indicated they thought *texting while driving* was the most serious distraction. Other distractions include: Personal grooming (40%), cell phone talking (handheld or hand free) (28%), eating while driving (24%), and passengers in vehicle (18%).
- When asked whether or not respondents had used a mobile device the last time they were behind the wheel for any reason; 63% of respondents indicated *yes* (up from 42% in 2015), and the remaining 37% indicated they had *not* used a mobile device.
- Residents were asked whether they believed that using a hands-free mobile device was safer than using a hand-held mobile device; 82% of respondents indicated *yes* they believe it is safer, while 18% indicated that they did not feel it was any safer.
- Residents were asked if they had ever made a driving mistake while using a cell phone or other mobile device even if it did not result in a crash; 59% of respondents indicated *yes* they had made a driving mistake and 41% indicated they had not made a driving mistake.
- When asked if they, as a driver, have ever been involved in a traffic crash; 66% of respondents indicated *yes* they had been in a traffic crash and the remaining 34% indicated that they had not been involved in a traffic crash.
- Residents were asked the primary reason they wear their seatbelt, 67% of respondents indicated that they primarily wear their seatbelts for *safety* reasons. Other reasons include: It's the law (22%), fear of ticket (5%), and personal tragedy (2%). Only 3% indicated they don't wear a seat belt.
- Residents were asked what the Kansas message was regarding seatbelt use, 91% of respondents indicated the phrase *Click it or Ticket*. Other messages include: Don't know (4%), Buckle up for safety (3%) and Kansas Clicks (2%).
- Residents were asked what the Kansas message was regarding drunk driving, 69% of respondents indicated You Drink, You Drive, You Lose. Other messages include: You Booze, You Lose (14%), don't know (11%), and Never Drive Drunk (6%).
- Residents were asked to indicate the average number of traffic related deaths in Kansas over the past several years; 36% of respondents indicated 101-300 traffic related deaths. Other amounts include: More than 500 (31%), 301-500 (27%) and less than 100 (6%).

SA-1066-16 **Public Information & Education** **\$12,802**

These project funds enabled KDOT to produce signage and posters for Country Stampede and all media events, as well as educational posters and brochures for all traffic safety topics.

SA-1218-16 **Drive to Zero Media Campaign** **\$261,828**

In 2016, KDOT hired a special media contractor, Walz Tetrick to raise awareness on traffic crashes and fatalities. The contractor designed and developed our umbrella logo, Drive to Zero. In addition, this vendor designed and produced posters and radio ads targeting the responsibility of the driver in crashes and raised awareness surrounding speeding statewide and a specific corridor. The vendor also created social media ads targeting speeding drivers.

SA-1903-16 **Sports Media Campaign** **\$303,577**

KDOT's new sports media contractor, Blue Window, LLC reviewed each of the sports marketing contracts KDOT has held in the past, and assumed management of these contracts in 2016. Through their statistical analysis process, they were able to gain greater value by negotiating with each venue for added value activations. They were successful in building partnerships with the Kansas Highway Patrol and other safety advocates to give KDOT's traffic safety initiatives a much greater presence at the venues.

SA-1908-16 **Wyandotte County Safe Communities** **\$43,159**

This grant with the Unified Government Public Health Dept. of Wyandotte County partially funds a traffic safety coordinator's position established to address the county's significant traffic safety challenges brought on, in large part, by a large and fluid immigrant block which has historically created a level of volatility in restraint compliance rates that is not seen in other Kansas urban areas.

SA-1913-16 **Think First Injury Prevention** **\$8,750**

The Think First program brings in crash victims who have sustained life-long traumatic brain or spinal cord injuries. The program conducted presentations that reached more than 7,000 high school and middle school students at 11 high schools, 5 middle schools and one driver's education class.

SA-2024-16 **Kansas Operation Lifesaver, Inc.** **\$15,000**

Kansas Operation Lifesaver continues its lifesaving work through outreach and education using authorized volunteers, approved messages and educational materials. Kansans and visitors to Kansas are targeted through public service announcements, booth and fair events, enforcement activities, training workbooks, calendars with emergency numbers and instructions, CDL training supplies and more to mitigate and eliminate the risk of injury and death on railroad rights of way.

Section 1906

RP-1921-16 **Racial Profiling Attorney General's Office** **\$56,336**

At the inception of the program, the Attorney General's office hired a retired judge to provide racial profiling training for law enforcement and citizens around the state, investigate racial profiling complaints, and to ensure reporting compliance on racial profiling. She has since been promoted and the position is currently vacant. In addition to the activities listed below, this position investigated 24 complaints of racial profiling filed with the Attorney General's office in FFY 2016.

In FFY16, 100% of state law enforcement agencies have filed their racial profiling annual reports. Only in the past two years has this been done. Prior to electronic reporting there was only a 50% compliance rate for annual reporting. All agency reports are filed electronically, and published on the Attorney General's website and accessible to the public via <http://ag.ks.gov/public-safety/racial-and-bias-based-policing> .

1. Staff presented the Fair and Impartial Policing curriculum to the Parsons Community Advisory Board on December 11, 2015.
2. Staff presented Comprehensive Plan to Achieve Fair and Impartial Policing training to Johnson County Sheriff executive command staff on October 19, 2015.
3. Staff presented information about the racial profiling law and complaint process as part of a law enforcement panel for a community workshop presented by the Wichita Racial Profiling Advisory Board on October 24, 2015.
4. Staff participated in Community Advisory Board Training sponsored by Kansas Law Enforcement Training Center and Kansas African American Affairs Commission in Wichita on January 5-6, 2016, Wyandotte County March 14-15, 2016, Johnson County March 16-17, 2016;
5. Staff presented Overview of the Law, Fair and Impartial Policing, and Comprehensive Plan to Achieve Fair and Impartial Policing curricula to the Topeka Community Advisory Board and one command officer March 22, 2016, and to the Prairie Village Community Advisory Board and Chief Schwarzkoph and one command officer March 30, 2016.
6. Staff attended KDOT Law Enforcement Recruitment Lunches in Hiawatha, Atchison and Manhattan; there were good exchanges regarding this project and requests for training were received through these outreach opportunities;
7. Staff attended KDOT Law Enforcement Recruitment Lunch and a portion of the LEO racial profiling training in Emporia on April 6, 2016; the trainer was Susan Wilson, head of the Office of Diversity and Inclusion at UMKC; it was a good forum for interaction with law enforcement and to provide information about the training provided by this project.
8. Fair and Impartial Policing trainings for LE were provided in Hiawatha and Shawnee, two sessions for each site, on June 28 and 29, 2016, respectively;
9. Fair and Impartial Policing training for Attorney General's Law Enforcement staff was provided on June 22, 2016.
10. This position has been vacant since June 5, 2016 but plans are to fill the vacancy early 2017.

RP-1925-16

Racial Profiling PI&E

\$774

This contract reimbursed the citizen advisory board of Wichita for training expenses and website renewal.

RP-2911-16

Racial Profiling Training - KLETC

\$96,092

Kansas law requires four hours annual training on Racial Profiling for Kansas Law Enforcement Officers. KDOT provided support to the Kansas Law Enforcement Training center to develop and implement on-line training for all Kansas law enforcement agencies. The curriculum has been completed and training is currently available on-line. In partnership with the Racial Profiling Attorney General's Office, there were three on-ground Law Enforcement Officer training sessions completed and nearly 100 officers attending in FFY 16.

Traffic Records

Strategies

- Implement TRCC.
- Provide better training and education for law enforcement.
- Provide resources and expertise in electronic data transmission.
- Develop linkage between other state data systems.

Project Summaries

Section 408

TR-2112-16

KBI Technical Support

\$4,800

This contract allowed the KBI to engage additional resources to manage and implement several projects tied to traffic records in support of TRCC objectives.

TR-2113-16

Project Consultant

\$40,337

Iteris Consulting provided project oversight of the eCitation and eStatute Programs created to improve efficiency in the administration of justice, compatibility with stakeholders, improve access to traffic citation data through a central repository, improve analysis of traffic citation data, reduce the amount of storage space to maintain traffic citation records, improve efficiency for Law Enforcement, etc. As well, Iteris assisted in providing support for the TRCC Strategic Plan and TRCC Performance Measures documents.

TR-4019-16

Record and Police Impaired Drivers

\$84,789

Analysts International developed software in support of the RAPID (Record And Police Impaired Drivers) interface. This nearly completed project will enable court personnel to access criminal history, arrest, adjudication, incarceration and other information in DUI cases around the state. The Kansas Bureau of Investigation took the lead role in this project designed to assist prosecutors and court personnel in the charging and prosecution of DUI offenders. This project designed a National Information Exchange Model (NIEM) compliant interface that allowed courts and prosecutors to electronically submit arrest and disposition information directly to the KBI. All the District Courts, the city of Wichita and the Leavenworth County Prosecutors office are all submitting data electronically through the system.

Section 405(c)

TR-4025-16

Security and Architecture

\$490,609

The KBI engaged a vendor to redesign the Kansas Criminal Justice Information System security architecture. This redesign will create efficiencies in the current system and allow additional users access to criminal information housed at the KBI.

State Funds

The TRCC administers the state funded Traffic Records Enhancement Fund. The total funding expended in FFY 16 for projects totaled \$301,904. Projects included software support and enhancements/maintenance to the Traffic Records System, evaluation of current Traffic Record System portal, geo-coding and mapping of crash reporting and development of eCitation and eStatute.

State of Kansas Annual Report Cost Summary-FFY 16

Program Area	State Match	Expenditures	Federal Share to Local
Planning and Administration	\$18,378	\$18,378	
Occupant Protection		\$130,978	
Paid Media		\$88,468	
Pedestrian and Bike		\$20,615	\$4,000
Police Traffic Services	\$925,000	\$1,398,246	\$1,287,784
Roadway Safety		\$99,120	\$99,120
Safe Communities		\$1,783,955	\$179,382
Youth Alcohol		\$142,847	
Total Section 402	\$943,378	\$3,682,607	\$1,570,286 (40%)
405 Occupant Protection	\$16,574	\$49,726	
405(b) Occupant Protection	\$152,162	\$605,208	
408 Traffic Records	\$32,481	\$129,926	
405(c) Traffic Records	\$122,652	\$490,609	
410 Impaired Driving	\$8,620	\$8,620	
405(d) Impaired Driving	\$702,000	\$2,807,497	
405(f) Motorcycle Safety	\$9,437	\$37,747	
2011 Booster Seat Incentive	\$45,882	\$45,882	
1906 Prohibit Racial Profiling	\$38,500	\$153,202	
Total Other Sections	\$1,128,308	\$4,328,417	
Grand Total	\$2,071,686	\$8,011,024	