

KENTUCKY OFFICE OF HIGHWAY SAFETY





**FY 2009 Kentucky Highway Safety
Performance Plan**

**COMMONWEALTH OF KENTUCKY
HIGHWAY SAFETY PERFORMANCE PLAN
FISCAL YEAR 2009**

(October 1, 2008 – September 30, 2009)

Prepared for:
THE UNITED STATES DEPARTMENT OF TRANSPORTATION
National Highway Traffic Safety Administration
and
Federal Highway Administration

Prepared by:

Kentucky Transportation Cabinet
Office of Highway Safety
Division of Highway Safety Programs
200 Mero Street
Frankfort, KY 40622

Note: This plan is subject to revision at any time during the twelve-month period from October 1, 2008 to September 30, 2009.

Table of Contents

	Page
Introduction	1
Performance Plan	
Description of Problem Identification Process	3
Summary Report on Highway Safety	6
Data Trends and Performance Goals	8
Process for Establishing Performance Goals	14
Process for Developing Programs and Projects	14
Planning and Administration	15
Overview of the Grants Planning Process	17
Highway Safety Plan	
Impaired Driving Program	18
Occupant Protection Program	23
Police Traffic Services Program	28
Planning & Administration Program	32
Motorcycle Safety Program	32
Safe Communities Program	33
Pedestrian & Bicycle Safety Program	33
Accident Investigation Program	34
Roadway Safety Program	34
Traffic Records Program	34
State Certification and Assurances	36
Appendix	45
Table of Crash Data/Trends	45
Statewide Problem Identification Matrix	
Highway Safety Plan Cost Summary	

INTRODUCTION

State Demographic Profile

Kentucky is geographically located in the upper Southeast region of the United States and is bordered by Missouri, Illinois, Indiana, Ohio, West Virginia, Virginia, and Tennessee. The U.S. Census estimates the 2007 population of Kentucky at 4,241,474, distributed over 39,728 square miles and 120 counties. Approximately 97% of Kentucky's land area is classified as rural, but about 56% of the population lives in urbanized areas. Approximately 90% of the population is white, 7.5% black, and 2% of Hispanic origin. Less than 1% of the population is Asian. According to the Census, 23.5% of the population is under 18 years of age, 63.9% is between the ages of 18-65, and 12.6% is over age 65. There are approximately 80,000 miles of public roads in Kentucky. Of those, 35% are state-maintained. In 2007 there were 3,763,123 registered vehicles and 3,000,000 million licensed drivers.

Executive Summary

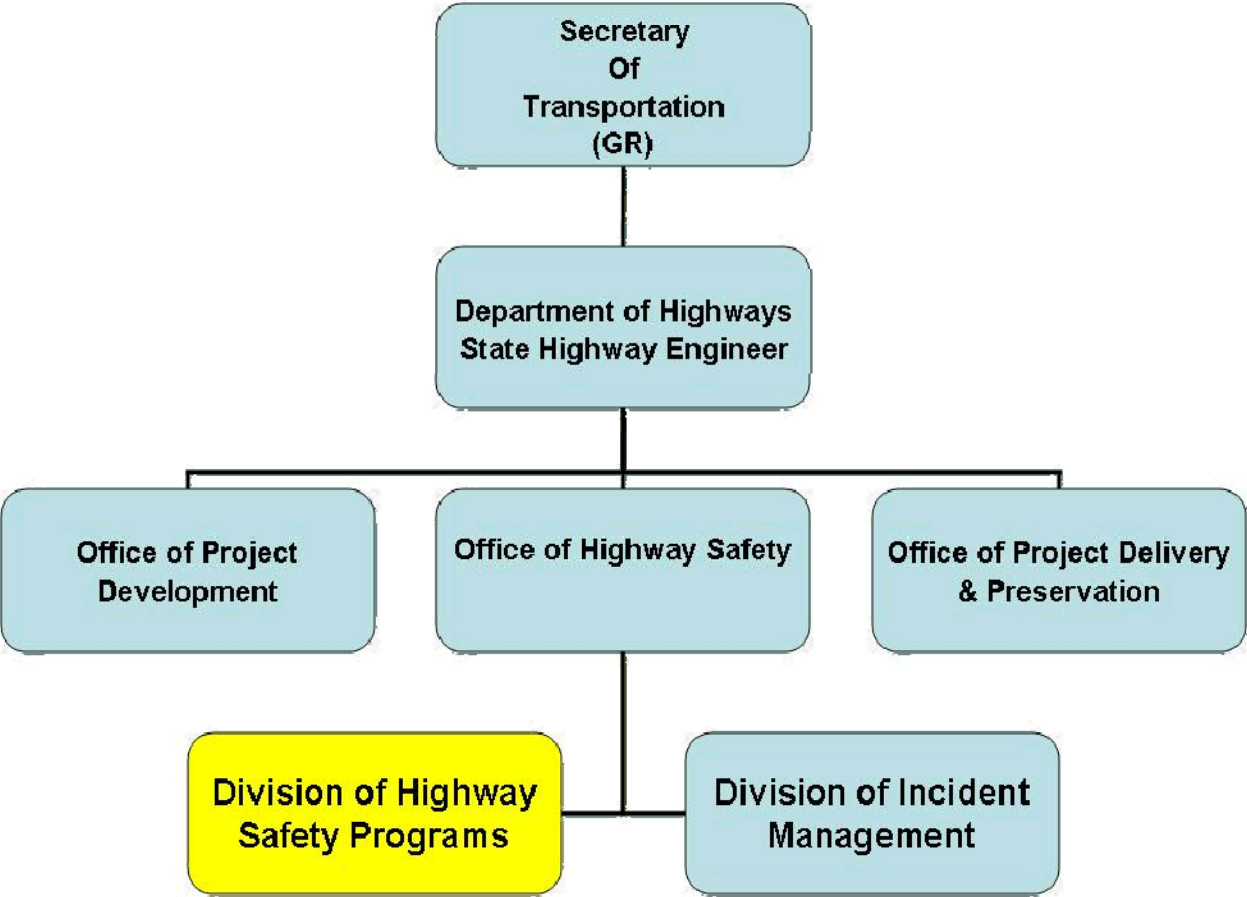
This document serves as Kentucky's application for Section 402 State and Community Highway Safety funds for the 2009 federal fiscal year. This plan provides an outline for the coming year for improving the safety of Kentucky's roadways by providing an overview of safety data, detailing priority areas, setting goals and performance measures and describing specific projects to help decrease the loss of life and injuries resulting from motor vehicle crashes. The nature of the projects is varied, but they all concentrate on addressing the behavioral issues that lead to crashes and in turn, injuries and fatalities. Kentucky's primary program areas within the context of NHTSA funding are impaired driving, occupant protection and police traffic services.

In November 2007 the Secretary of the Transportation Cabinet was appointed as the Governor's Representative for Highway Safety in Kentucky. In June 2008, Kentucky's State Highway Safety Office was reorganized by executive order from the Kentucky Office of Highway Safety in the Transportation Cabinet to the Office of Highway Safety in the Department of Highways in the Transportation Cabinet. The administration of the federal 402 Highway Safety Program in Kentucky is housed in the Office's Division of Highway Safety Programs, which is a combination of two previous Divisions – the Division of Highway Safety Programs and the Division of Highway Safety Administration. The new organizational structure allows for a more integrated and comprehensive approach to highway safety in which all components are guided by the state's Strategic Highway Safety Plan.

Mission Statement

The mission of the Kentucky Office of Highway Safety is to be the vital link in the Commonwealth's chain of highway traffic safety by elevating the emphasis on highway and traffic safety. This mission is guided by the following vision statement: "through public and private partnerships, achieve the most improved and sustainable downward trend in highway fatalities and injuries in the nation."

Office of Highway Safety Organizational Chart
Kentucky Office of Highway Safety



PART I: PERFORMANCE PLAN

A. Description of Problem Identification Process

Crash Data Collection and Analysis

Identification of traffic-related problems on the statewide level is key to the development of the annual Highway Safety Plan/Performance Plan. All Kentucky crash data originate from the CRASH (Collision Report Analysis for Safer Highways) database, which is maintained by the Kentucky State Police. All law enforcement agencies in Kentucky are required to submit uniform reports of any injury, fatal, or property damage crash that renders a vehicle inoperable to the Kentucky State Police's Records Branch.

Through a cooperative agreement with the Kentucky State Police, The Office of Highway Safety has access to certain data from the CRASH database to use as the basis for its own Traffic Safety Data Service (TSDS). The TSDS is in turn able to provide this information to the departments within the Transportation Cabinet, as well as to respond to queries by law enforcement, consultants, the Governor's Executive Committee on Highway Safety, the public, and others. With its analytical tools and mapping capabilities, the TSDS is able to conduct highway safety problem identification for the purpose of establishing program and funding priorities within the Office of Highway Safety.

The TSDS annually updates a matrix that has been used for the past several years to evaluate data from Kentucky's 120 counties. This matrix utilizes data from the most recent three-year period (2005-2007) to establish a ranking system for highway safety problems by county, so that priority areas can more easily be established for reviewing funding proposals and for program delivery. This problem identification tool (included in the **Appendix**) tabulates data from each of the following data factors for each county:

- Population
- Number of fatalities
- Number of incapacitating injuries
- Fatality and Injury Rate per 100 MVM
- Number of impaired driving crashes
- Observed seat belt usage rate
- Percent of Belted Fatalities
- Number of speeding-related crashes
- Number of commercial motor vehicle crashes
- Number of motorcycle-involved crashes.

The matrix spreadsheet is set up to assign a ranking of 1-120 for each county in each of these categories. All of these rankings are combined into an overall ranking as well. Fatalities and incapacitating injuries were given more weight in determining the overall ranking. Counties with the lowest overall numerical rank have the greatest number of problems, while counties with the highest numerical rank have the lowest number of problems. The Office of Highway Safety announced that it will target highway safety countermeasures in those counties that were

ranked in the top 25 overall in the upcoming year. The grant review committee used this matrix and the identification of priority counties as a tool in reviewing applications for highway safety project funding. Individual factor rankings were consulted to help determine the most suitable program area for particular project proposals. This was especially helpful for evaluating law enforcement proposals, which make up a large percentage of the applications received.

In addition to the data analysis conducted by the TSDS, the Kentucky Transportation Center of the University of Kentucky is contracted to conduct an annual review of crash data from the most recently available year, as well as the prior four-year period. The Kentucky Transportation Center uses this data to develop the following documents on an annual basis: Analysis of Traffic Crash Data in Kentucky and Kentucky Traffic Collision Facts. These documents contain the most comprehensive published collection and analysis of statewide crash data available.

Analysis of Traffic Crash Data in Kentucky compiles and analyzes detailed motor vehicle crash data for all Kentucky counties and for cities over 2,500 in population for the most recent five-year period. It also includes relevant data on arrest and conviction data for DUI offenses. Collision Facts characterizes traffic crashes in a more general manner, presenting information on contributing factors, occurrence by type of vehicle & roadway, age and sex of driver, etc. The Kentucky Transportation Center also conducts the annual statewide safety belt and child restraint usage survey according to NHTSA standards. The results are published each year in a separate research report, Safety Belt Usage Survey in Kentucky. The Office of Highways Safety staff uses all of these documents to gain a better understanding of trends in traffic collisions and to help identify the most problematic areas and/or jurisdictions in the state. Demographic data and the most common factors contributing to crashes are also examined to determine the most at-risk populations and behaviors that should be addressed in the Performance Plan.

Governor's Executive Committee on Highway Safety

Problem identification and strategic planning for highway safety is also an ongoing endeavor of the Governor's Executive Committee on Highway Safety. This committee was established in 2004 to address the epidemic of highway fatalities and injuries occurring on Kentucky's roadways. The Executive Committee has the responsibility to create an integrated and strategic highway safety management program that is data-driven and performance based. The Executive Committee also coordinates the development and implementation of goals and supporting actions and facilitates the acquisition of needed resources.

The Executive Committee is chaired by the Executive Director of the Office of Highway Safety. Other members include professionals from a number of different disciplines that are relevant to highway safety in Kentucky. Representation includes individuals from the following organizations: Kentucky Transportation Cabinet, Kentucky State Police, Federal Highway Administration, Federal Motor Carrier Safety Administration, Kentucky Department of Public Health, Administrative Office of the Courts, University of Kentucky Transportation Center, Kentucky Sheriff's Association, Kentucky Association of Chiefs of Police, Kentucky Board of Emergency Medical Services, Kentucky Office of Insurance, Kentucky Motor Transport Association, Mothers Against Drunk Driving, National Safety Council, Kentucky Injury

Prevention and Research Program, Kentucky Office of Alcoholic Beverage Control, Kentucky Operation Lifesaver and the Insurance Institute of Kentucky.

Based on their review of highway safety data, the Governor's Executive Committee recognized a number of opportunity areas for which further study was needed. These became the following ten highway safety emphasis areas:

- Impaired Driving
- Lane Departure
- Drive Smart Safety Corridors
- Aggressive Driving
- Incident Management
- Traffic Records
- Legislative Issues
- Young Drivers
- Motorcycle Safety
- Occupant Protection
- Commercial Vehicle Safety

Task teams were established for each emphasis area. Subsequently, these teams developed goals and strategies that went into Kentucky's Strategic Highway Safety Plan, which was completed and approved in 2006. This plan, entitled "Kentucky's Roadmap to Safer Highways" serves as the umbrella guide to increase coordination, communication and cooperation among state, federal and local agencies, non-profit organizations and other highway safety advocates. It also serves as a useful point of reference for all other highway safety planning efforts, including problem identification and the formulation of goals for this Highway Safety Performance Plan.

B. Summary Report on Highway Safety in Kentucky

General:

- In 2007, there were 124,553 crashes involving motor vehicles on Kentucky's public roadways. This is approximately a 4% decrease from 2006. By comparison, the number of licensed drivers increased 3.4% and registered vehicles each increased by 5.7%.
- The upward trend in fatalities was finally reversed in 2006, dropping to 913. This represents 72 fewer persons killed on Kentucky roadways than in 2005, a 7.3% reduction. The reduction continued in 2007, dropping to 864, an 8.9% reduction over 2006.
- The fatality rate per 100 million-vehicle miles traveled decreased from 1.92 to 1.80 in 2007. Despite this decline, this rate is still much higher than the national rate (currently 1.42).
- Injuries have been declining for the past several years in Kentucky and were reduced in 2007 by 12% over 2006.
- While most of Kentucky's collisions (64%) occur in urban areas, the majority of fatal collisions (60%) occur in rural areas.

Impaired Driving:

- During the last four years, alcohol-related fatalities comprised an average of about 21% of all motor vehicle fatalities. This percentage increased to 24% in 2007 and the number of alcohol-involved fatalities increased by 6.3% between 2006 and 2007.
- The number of DUI cases filed with the court system decreased 2.9% in 2007, after having increasing in 2006. The DUI conviction rate in Kentucky, however, rose by 1.7% in 2007 to a current rate of 84.9%. In some counties, however, this percentage is much lower.
- The following counties comprised 53% of the state's alcohol-related collisions in 2007: Boone, Bullitt, Campbell, Christian, Daviess, Fayette, Franklin, Hardin, Jefferson, Kenton, Madison, McCracken, Pike, Pulaski, and Warren.

Occupant Protection:

- The statewide average safety belt usage rate in 2008 increased only slightly from the 2007 rate. Usage among front seat occupants increased from 71.9% in 2007 to 73.3% in 2008, an increase of 1.4 percentage points.
- Although the gap in seat belt usage has narrowed between Kentucky and the U.S., Kentucky's rate is nine percentage points below the national average of 82%.
- Safety belt usage on rural minor collector/local roads remains a particular problem. Although it increased from 62.6% in 2007 to 64.6% in 2008, usage on rural secondary roads is about 16.4 percentage points lower than on rural interstate highways.
- Average seat belt usage in the east/southeast part of the state remains at least ten percentage points lower than it is in the north and west portions of Kentucky.
- Overall usage of child restraints for children under four years of age remained unchanged at 98% in 2008.

- Restraint usage in pickup trucks saw minimal improvement in 2008, increasing from 60.1% in 2007 to 60.4% in 2008. Belt usage is still much lower in pickups than in any other type of vehicle.
- Sixty-two percent of the vehicle occupants killed in 2007 in Kentucky were not restrained. This percentage has decreased during the last year.

Speeding:

- The number of speed-related crashes decreased by nearly 21.8% from 2006 to 2007. Speeding-related **fatal** crashes decreased by 14.7%, from 168 in 2006 to 151 in 2007.
- Speed is one of the most common contributing factors in fatal crashes in Kentucky (about 18.8% all fatal crashes in 2007 can be attributed to exceeding the posted speed limit or driving too fast for conditions). These two factors combined are on par with alcohol involvement and inattention as contributing factors in fatal crashes.
- The majority of crashes involving unsafe speed occur in rural areas.
- The majority of Kentucky drivers travel at speeds above the regulatory speed limit. Increased speed decreases crash avoidance and increases crash severity.
- Speeding convictions increased by 2.9% between 2006 and 2007. Speeding convictions per speed related crash also increased from a rate of 10.9 in 2006 to 12.7 in 2007.

Young Drivers:

- The percentage of teenage drivers involved in traffic crashes is over-represented compared to the percentage of the driving population they comprise. In 2007, drivers age 16-19 were involved in about 18.6% of all crashes, 19% of injury crashes and 13% of fatal crashes, even though this age group only makes up 6% of licensed drivers in the state.
- 20-24 year-old drivers (11%) are also over-represented in fatal collisions relative to the percentage of the driving population they comprise.
- Observational surveys at a sampling of high schools in recent years indicate that seat belt usage is significantly lower among high school students than among the general population in Kentucky.

Motorcycles:

- The number of registered motorcycles in Kentucky has increased significantly in the last two years. (96,522 in 2007 compared with 89,721 in 2006.)
- The number of fatal motorcycle crashes and motorcyclists killed has also increased sharply in the past several years.
- Helmet usage among motorcyclists is 58% in 2008, and Kentucky has no mandatory helmet law for adults.

C. Data Trends & Performance Goals

Kentucky Crash Data and Recent Trends

	2003	2004	2005	2006	Avg. 2003- 2006	2007	2007 % change
Total Crashes	129,831	133,718	128,685	127,252	129, 871	124,553	-4.1
Crash Rate per 100M VMT	277	283	272	267	275	260	-5.4
Fatalities (actual)	931	964	985	913	948	864	-8.9
Fatality Rate per 100M VMT	1.99	2.04	2.08	1.92	2.01	1.80	-10.2
Fatality Rate per 100K population	22.5	23.3	23.6	21.7	22.8	20.4	-10.5
Injuries (actual)	46,966	44,986	43,295	41,044	44,073	38,786	-12.0
Fatality & Serious Injury Rate per 100M VMT	15.4	14.5	14.4	13.6	14.5	11.9	-17.9
Fatality & Serious Injury Rate per 100K population	175.4	165.0	163.7	153.5	164.4	134.4	-18.2

Source: Analysis of Traffic Crash Data in Kentucky, 2003-2007. Note: Except for fatal crashes, data refer to crashes on public roads only.

*Recent Kentucky data is also illustrated in graph format in the **Appendix** of this document

General Highway Safety Goals:

- To reduce the number of highway fatalities to no more than 700 by December 31, 2009.
- To reduce injuries by 10% from 38,786 to 34,907 by December 31, 2009.
- To reduce the fatality rate per 100 Million Vehicle Miles Traveled from 1.8 to 1.5 by December 31, 2009.
- To reduce the fatality and serious injury rate per 100 Million Vehicle Miles Traveled from 11.9 to 9.0 by December 31, 2009.

General Performance Measures:

- Number of fatalities (actual)
- Fatality Rate per 100 million vehicle miles traveled and per 100K population
- Number injuries (actual)
- Fatal & serious injury rate per 100 million vehicle miles traveled and per 100K population

Impaired Driving Data (2003-2007)

	2003	2004	2005	2006	Avg. 2003- 2006	2007	2007 % change
Alcohol- Related Crashes	5,578	5,645	5,440	5,360	5,501	5,167	-6.1
Alcohol -Related Injury Crashes	2,383	2,257	2,166	2,118	2,231	1,987	-10.9
Alcohol- Related Fatal Crashes	160	170	188	171	172	188	9.3
Alcohol- Related Fatalities	178	199	204	188	192	204	6.3
% of all fatalities	19.1	21	21	21	20.5	24	1.2
Alcohol-related fatality rate per 100M VMT	0.38	0.42	0.43	0.39	0.41	0.43	4.9
DUI Charges Filed	40,436	40,118	36,946	39,838	39,335	38,190	-2.9
DUI Convictions	25,475	25,611	23,710	25,294	25,023	25,018	0.0
DUI Conviction Rate (%)*	83.3	83.2	83.7	83.8	83.5	84.9	1.7

*Conviction rates exclude all pending cases

Impaired Driving Program Goals:

- To reduce the number of alcohol-related injury crashes by 10%, from 2,231 to 2,007 by December 31, 2009.
- To reduce the number of alcohol-related fatalities by 10%, from 204 to 183 by December 31, 2009.
- To reduce the percentage of all fatalities that is alcohol-related to less than 20% by December 31, 2009.
- To increase the DUI conviction rate to at least 87% by December 31, 2009.

Performance Measures:

- Total number of alcohol-related crashes, fatalities, and injuries
- Alcohol-related fatalities as a percentage of all fatalities
- Average statewide DUI conviction rate

Impaired Driving Program Objectives

- Increase public awareness of the DUI problem and the consequences for offenders, especially among those most likely to drink and drive.
- Increase enforcement in counties and cities with high numbers of alcohol-related crashes by providing law enforcement agencies with the resources they need to implement strict DUI enforcement programs.
- Educate prosecutors and law enforcement on ways to more effectively manage DUI cases.

- Educate Kentucky’s youth about the dangers and consequences of driving impaired and underage drinking.
- Coordinate at least one major statewide impaired driving mobilization per year.
- Provide incentives/awards to law enforcement agencies/officers who excel in apprehending impaired drivers.
- Provide training to state and local law enforcement officers to become certified Drug Recognition Experts. This certification will be an effective tool for recognizing and convicting persons driving impaired by drugs.

Occupant Protection Data, 2004-2008

Average Safety Belt Usage Rates (%)	2004	2005	2006	2007	2008
All Front Seat Occupants	66.0	66.7	67.2	71.8	73.3
By Location:					
Rural Interstate	75.7	77.5	77.2	80.5	81.8
Rural Principal Arterial	65.0	64.5	64.5	68.6	70.9
Rural Minor Arterial/Major Collector	56.7	57.4	59.3	64.2	65.4
Rural Minor Collector/Local	54.9	53.6	56.2	62.6	64.6
Urban Interstate/Freeway	74.3	75.7	75.7	80.0	80.3
Urban Principal Arterial	62.9	64.0	65.0	69.5	71.2
Urban Minor Arterial/Collector/Local	65.9	66.0	65.5	70.7	73.1
By Type of Vehicle:					
Passenger Car	70.4	69.8	71.1	74.6	76.6
Pickup Truck	50.7	54.1	52.6	60.1	60.4
Van	70.9	73.3	73.0	78.1	79.1
Sport Utility Vehicle	73.3	73.2	74.0	76.3	76.9
Drivers Only	65.7	66.8	67.7	71.9	74.0
Child Restraint Usage—Children under Age 4 (both front and rear)	96.0	94.4	94.0	98.5	98.0

ALL FRONT SEAT OCCUPANTS PERCENT USAGE BY GEOGRAPHIC AREA (2008)				
	WEST	NORTH	EAST	ALL
Rural Interstate	84.6	81.2	80.0	81.8
Rural Principal Arterial	78.7	79.9	61.1	70.9
Rural Minor Arterial/Major Collector	66.9	73.0	58.4	65.4
Rural Minor Collector/Local	65.9	67.4	62.1	64.6
Urban Interstate/Freeway	81.5	80.2	77.5	80.3
Urban Principal Arterial	73.6	71.6	65.2	71.2
Urban Minor Arterial/Collector/local	72.1	75.4	63.0	73.1
All	74.0	77.2	63.4	73.3

Occupant Protection Program Goals:

- To increase Kentucky’s average seat belt usage rate from 73.3% to 80% by December 31, 2009.
- To increase seat belt usage to at least 60% in counties that currently have usage rates between 40-50% by December 31, 2009.
- To increase the usage rate of child restraints for children under 4 years of age to 99% by December 31, 2009.

Performance Measures:

- The overall usage rate derived from the most recent observational surveys.
- Usage rate for each county.
- The child restraint usage rate for children under age four.

Occupant Protection Objectives

- Educate the public about the provisions of Kentucky’s primary seat belt law and the consequences of non-compliance.
- Encourage law enforcement agencies to aggressively enforce the primary seat belt law.
- Provide law enforcement agencies with the necessary resources to implement occupant protection enforcement and educational programs in counties with low usage rates.
- Coordinate at least one major statewide law enforcement mobilization focused on occupant protection during the year.
- Continue to increase public awareness about the lifesaving benefits of seat belts, child safety seats and booster seats. Target messages to those segments of the population and to geographic areas with the lowest usage rates.
- Encourage the passage of stronger occupant protection laws for children (specifically, those over 40” tall, who are not adequately protected under the current child restraint law) by

providing information and statistics about this topic to lawmakers, safety advocates and grassroots organizations.

- Continue to conduct seat belt observational surveys in every county.
- Educate more parents, childcare workers, emergency personnel and others about how to correctly install child safety seats. Support making more fitting stations and CPS technicians available to the public.

Speed-Related Traffic Data (2003– 2007)

	2003	2004	2005	2006	Average 2003-2006	2007	2007 % change
Speed-Related Crashes	9,658	9,369	8,083	7,931	8,760	6,847	-21.8
Speed-Related Injury Crashes	3,197	3,035	2,806	2,663	2,925	2,238	-23.5
Speed-Related Fatal Crashes	163	187	191	168	177	151	-14.7
% of All Fatal Crashes	19.2	21.9	21.6	20.1	20.7	18.8	-9.2
Speeding Convictions	86,852	86,115	79,596	86,531	84,774	87,216	2.9
Speeding Convictions per Speed -Related Crash	9.0	9.2	9.8	10.9	9.7	12.7	31.3

Source: Analysis of Traffic Crash Data in Kentucky, 2003-2007

Police Traffic Services Program Goals:

- To reduce speeding related crashes by 5% from 6,847 to 6,505 by December 31, 2009.
- To reduce speeding related fatal crashes by 10% from 151 to 135 by December 31, 2009.

Performance Measures:

- Total number of speed-related crashes
- Number of speed-related fatal and injury crashes

Police Traffic Services Program Objectives

- Provide law enforcement agencies with the resources necessary to implement speed enforcement programs.
- Raise public awareness about the dangers and penalties for speeding through educational outreach activities and media opportunities.

Motorcycle Crash Data (2003-2007)

	2003	2004	2005	2006	Average 2003- 2006	2007	2007 Percent Change
Motorcycle Crashes	1,438	1,581	1,777	1,765	1,640	2,087	27.3
Motorcycle-involved Injury Crashes	997	1,114	1,184	1,182	1,119	1,399	25.0
Motorcycle-involved Fatal Crashes	56	70	83	94	76	112	47.4
Motorcyclists killed	58	74	89	89	78	113	44.8
Number of Registered Motorcycles	66,799	66,799	74,412	89,721	74,432	96,522	30.0
Motorcycle Helmet Usage	54	59	60	56	57	58	0.0

Source: Analysis of Traffic Crash Data in Kentucky, 2003-2007

Motorcycle Program Goals:

- To reduce the number of motorcycle involved crashes by 10% from 2,087 to 1,878 by December 31, 2009.
- To reduce the number of motorcycle involved fatal crashes by at least 10% from 112 to 100 by December 31, 2009.
- To reduce the number of motorcyclist fatalities by 10% from 113 to 100 by December 31, 2009.

Performance Measures:

- Total number of motorcycle-involved crashes
- Number of motorcycle-involved fatal crashes
- Number of motorcyclist fatalities

Objectives:

- Use public service announcements to increase motorists' awareness of the need to look out for motorcyclists and to "share the road" with them.
- Increase motorcyclists' knowledge of safe riding behaviors through the distribution of educational materials and targeted media messages.
- Increase enforcement of impaired driving laws relating to motorcyclists.

D. Process for Establishing Performance Goals

The Kentucky Office of Highway Safety staff takes into consideration all data sources available and examines trends to establish realistic performance goals for each program area. Where program area goals have been established by collaborative efforts, such as by the Governor's Executive Committee on Highway Safety or by one of the committee's emphasis area task teams, those goals are adopted. National goals are also taken into consideration, as well as comparative data between Kentucky and the nation as a whole. The impact of recent legislative changes and ongoing highway safety programs is also considered to determine the degree of change that can be expected.

E. Process for Developing Programs and Projects

Programs and projects are designed to impact problems that are identified through the problem identification process outlined at the beginning of the Performance Plan. The Kentucky Office of Highway Safety staff holds meetings throughout the fiscal year to plan and coordinate major programs and initiatives. Work with partner agencies also guides this process. The Kentucky Office of Highway Safety selects projects for funding each year following submittal of applications by eligible state and local public agencies and non-profit groups. Grant applications are provided to current grantees, to any requesting agency, and to agencies in identified high priority areas. Law Enforcement Liaisons are instrumental in contacting and encouraging agencies in these high priority areas to apply for grants. In addition, the grant application is made available on the Kentucky Office of Highway Safety's web site, along with basic instructions for submission.

Once all applications are received, they are divided among the grant review committee's members to review and note recommendations. In June, the grant review committee meets for several days to discuss and evaluate all proposals as a group. The committee is comprised of Kentucky Office of Highway Safety staff and Law Enforcement Liaisons. Grant proposals are evaluated for eligibility, completeness, and the ability of the project to address identified highway safety problems. Other factors are also given consideration, such as whether or not the proposed project is located in a high-priority county, the agency's past participation in highway safety mobilizations, and their prior performance as a grantee (if applicable). Project budgets are also evaluated and recommendations made for modification, if necessary. The Committee's recommendations are then forwarded to the Governor's Representative for Highway Safety for final approval.

For Fiscal Year 2009, a total of 118 external grant applications were received. 99 of these were enforcement proposals and 19 were educational or other projects. Kentucky Office of Highway Safety review and final review by the Governor's Representative resulted in approval of all but 7 enforcement proposals and 14 educational/other proposals. Many of those that were not funded were determined to be ineligible under the Grants Management Branch's funding policies. Below is a summary of the number and types of projects that are proposed for funding in FY 2009.

Section 402 Program Grants (FFY 2009)			
Program Area	New	Continuation	Total
Planning & Administration		1	1
Alcohol Countermeasures/Impaired Driving	6	34	40
Occupant Protection	4	25	29
Police Traffic Services	13	33	46
Pedestrian/Bicycle Safety		1	1
Safe Communities		1	1
Roadway Safety		1	1
Accident Investigation			
Driver Education			
Traffic Records		3	3
Total	23	100	123

F. Planning and Administration

Planning and Administration includes those activities and costs necessary for the overall management and operation of the Office of Highway Safety's Division of Highway Safety Programs.

Program Goals:

- To administer the State and Community Highway Safety Grant Program and other federally funded highway safety programs.
- To plan and coordinate highway safety activities designed to decrease traffic crashes, deaths, and injuries in Kentucky.

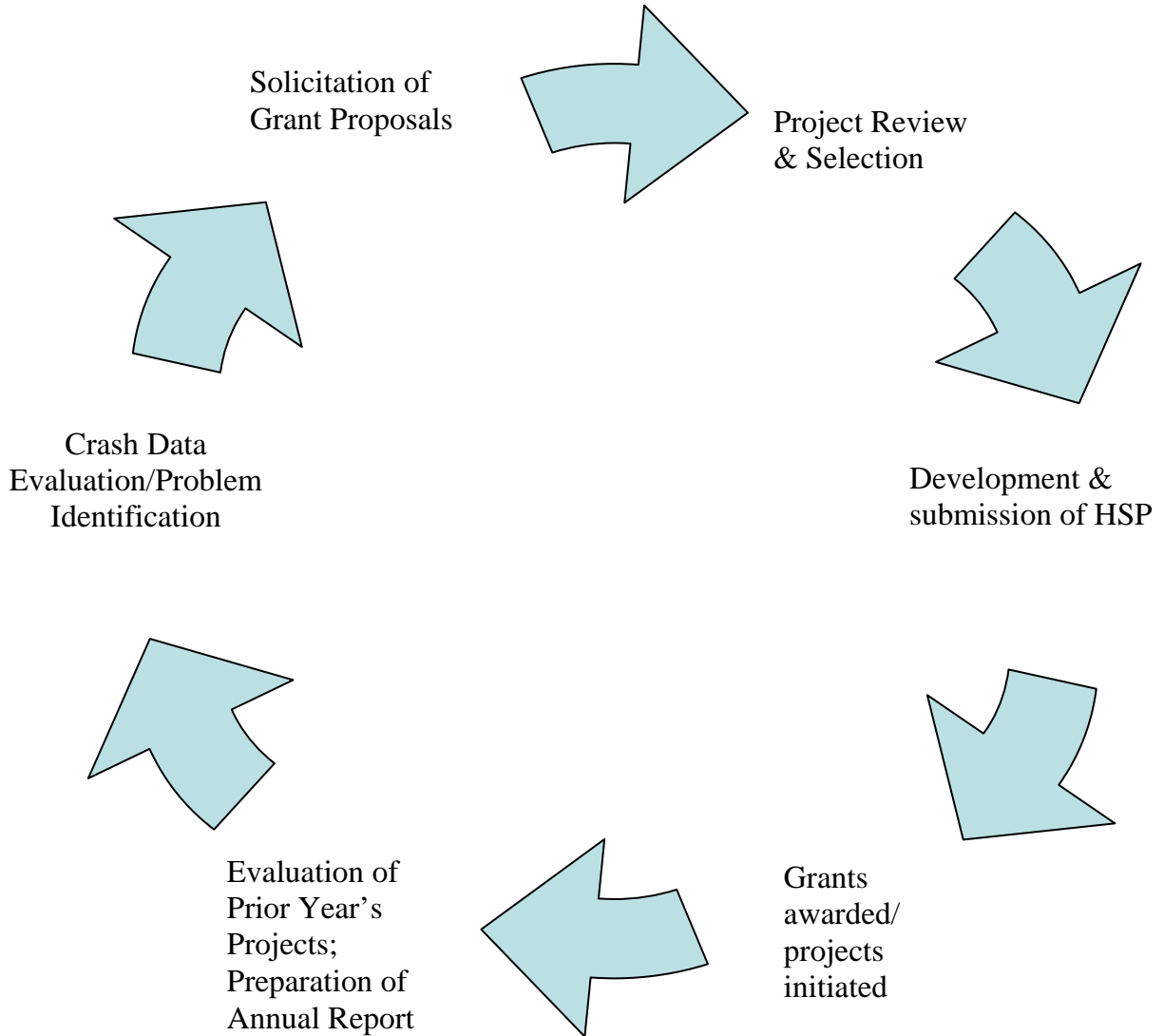
Performance Measures

- Annual Report: Describes how well the Office of Highway Safety has met the general and specific program area goals set forth each year in the HSPP, using relevant statistical data.
- Management Review Process: Periodic evaluations conducted by NHTSA to determine how well the Office of Highway Safety is meeting its administrative and management requirements in compliance with applicable federal laws and regulations. Kentucky's last management review took place in FY 2006.
- Program Assessments to determine strengths, weaknesses and opportunities in various highway safety program areas, such as occupant protection, traffic records or impaired driving.
- Evaluation of crash data, fatality data, and seat belt usage using the resources of the Traffic Safety Data Service.
- Communications evaluation tools. The Office of Highway Safety will conduct surveys as required by NHTSA to determine how well its communications activities are reaching the public and/or target audiences.

Objectives:

- Develop/modify and implement the state's Strategic Highway Safety Plan.
- Analyze data and research, determining geographic and programmatic needs and make recommendations for improvements in highway safety programs.
- Monitor and provide technical assistance to grantees to ensure compliance with federal and state regulations, as well as with programmatic and budgetary guidelines.

Overview of the Highway Safety Grants Planning Process



PART II: HIGHWAY SAFETY PLAN

Impaired Driving Program

Project Number: AL-09-01

Project Title: Alcohol Program Management (Kentucky Office of Highway Safety)

Description: This grant will fund one-third of the salaries, benefits, travel and training for each of the Grants Program Managers.

Budget: \$77,329

Project Number: AL-09-02

Project Title: Alcohol Public Information and Education (Kentucky Office of Highway Safety)

Description: The Kentucky Office of Highway Safety will purchase educational materials to distribute in highway safety programs and events at schools and in communities across the state. Materials will also be distributed to Alcohol Countermeasures grantees. All purchased items will be printed with an impaired driving message.

Budget: \$50,000

Project Number: AL-09-03

Project Title: Alcohol Networking (Kentucky Office of Highway Safety)

Description: These funds will be used to cover travel and training expenses for partners (non-Kentucky Office of Highway Safety personnel) to attend professional conferences or meetings related to the impaired driving program. They may also be used for expenses for meetings or training events sponsored by the Office.

Budget: \$5,000

Project Number: AL-09-04

Project Title: DUI Enforcement Awards

Description: The Kentucky Office of Highway Safety will continue the practice of holding an awards ceremony and luncheon to recognize law enforcement agencies and officers who have excelled in arresting impaired drivers during the previous federal fiscal year.

Budget: \$22,000 (event planning & coordination, facility rental, meals and plaques/awards)

Project Number: AL-09-05

Project Title: Kentucky State Police Media Relations

Description: The Kentucky State Police will purchase educational materials for the agency's Public Affairs Officers to distribute in highway safety programs at schools and community events across the state. All purchased items will be printed with an impaired driving message.

Budget: \$20,000

Project Number: AL-09-06

Project Title: Kentucky Crime Prevention Coalition Youth Alcohol Coordinator

Description: Funding will continue to provide a full time staff person to conduct Fatal Experience Driving Simulation Programs to students at high schools and universities throughout the state. This program utilizes a customized golf-cart type vehicle, a driving course, and Fatal Vision goggles to educate young people about the effects of underage alcohol use and driving while impaired. A modified scooter simulation is offered to middle school students for underage drinking prevention. These programs will be publicized periodically at public awareness events or conferences related to youth alcohol prevention and highway safety.

Budget: \$86,250

Project Number: AL-09-07

Project Title: Mothers Against Drunk Driving Court Monitoring Program

Description: This program continues an effort that began in October 2006 to hire a full-time Court Monitoring Coordinator who will recruit and train volunteers in court procedures and Kentucky impaired driving laws, and to send them into courtrooms to observe DUI-related cases. Three county court systems with low DUI conviction rates have been targeted for this project, which also involves reviewing court outcomes and tracking of offenders after sentencing. The grant funds the salary and expenses of a project coordinator who oversees all aspects of the program, including recruiting, training and supervising volunteers, gathering baseline data, compiling statistics on the disposition of cases, and writing progress and final reports.

Budget: \$67,565

Project Number: AL-09-08 through AL-09-40

Project Title: Local Law Enforcement Alcohol Countermeasures Projects

Description: These grants will fund 33 local law enforcement agencies' overtime enforcement programs focused on DUI in each of the following counties: Barren, Boone, Bourbon, Boyd, Bullitt, Calloway, Campbell, Clark, Daviess, Fayette, Floyd, Hardin, Harlan, Johnson, Kenton, Laurel, Logan, Madison, Marshall, McCracken, Pulaski, Scott, and Simpson. In addition to funds for overtime salaries and benefits, many of these agencies will also receive funds for equipment (such as preliminary breath testing devices, in-car video cameras, or radars). Additionally, grant budgets will include funding for personnel to attend the 2009 Kentucky Lifesavers Conference.

Budget: \$ 583,302

Project Number: K8PM-09-01

Project Title: Impaired Driving Paid Media

Description: These funds will be used to develop and run statewide media campaigns to coincide with the national *Drunk Driving: Over the Limit, Under Arrest* campaign in August-September 2009 and beyond. In addition, anti-DUI advertising will be purchased during other high-risk times of the year to sustain the message. The following media formats will be considered for reaching target audiences: network & cable television, radio, billboards and other print ads, and messaging at sporting venues. Media markets that serve areas where there are a high number of alcohol-related crashes will be targeted.

Budget: \$820,000 (projected 410 Funds)

Project Number: K8-09-01

Project Title: Kentucky Administrative Office of the Courts

Description: This project provides funding for the coordination and implementation of a statewide "DUI and Traffic Safety" District Judges Conference utilizing judges and experts in the field of DUI and traffic safety. This training will provide judges with the most recent scientific data, legal knowledge regarding impaired driving, and useful tactics to better manage the staggering number of cases that come before the court and to identify resources that may be available to help combat recidivism.

Budget: \$45,500 (projected 410 Funds)

Project Number: K8-09-02

Project Title: Kentucky Office of the Attorney General – Traffic Safety Resource Prosecutor

Description: This project provides third-year funding for the position of a full-time Traffic Safety Resource Prosecutor, TSRP. This specialized attorney is an experienced prosecutor who is an expert on Kentucky's traffic and DUI related laws. The TSRP will coordinate a minimum

of three trainings during the grant year that may include: trial advocacy in traffic safety cases, use of effective trial techniques, current legislative overview, use of expert witnesses, physiological effects of drugs and alcohol, common defenses, training on repeat offender prosecution and sobriety tests, vehicle forfeiture and immobilization issues, and communication skills and pre-trial issues in DUI cases. The third training will focus on DUI vehicular homicide. All of these training events will be available to all state prosecutors, and will place emphasis on a team approach with law enforcement.

Budget: \$172,795 (projected 410 Funds)

Project Number: K8-09-03

Project Title: Department for Criminal Justice Training – Drug Evaluation and Classification

Description: This continuation project will offer two classes and certification training for another 40 law enforcement officers to become certified Drug Recognition Experts (DRE's). This program has produced over 100 DRE's since it was implemented in Kentucky three years ago. Participants are selected from areas deemed as high need, based upon the number of drug-related crashes and drug arrest data. With Kentucky's increasing number of drug-related DUI's and crashes, this program is an essential component of Kentucky's strategy to reduce impaired driving. The training curriculum, which is provided by the International Association of Chiefs of Police, includes classroom instruction, written tests and supervised evaluation of subjects. Those certified by this program are able to conduct standardized and systematic evaluations of drug-impaired individuals and provide reliable testimony in court. The grant will help pay for the DRE Program Coordinator's salary, instructors' expenses, materials and equipment for the classes and certification/recertification training and meals for the participants.

Budget: \$75,000 (projected 410 Funds)

Project Number: K8-09-04

Project Title: Kentucky State Police Nighthawk Traffic Alcohol Program

Description: Kentucky State Police will conduct selective traffic enforcement at key locations in each of 16 KSP post areas. Based on crash data, enforcement will be emphasized in identified safety corridors and in counties with high numbers of alcohol-related crashes. KSP will cooperate with local agencies in saturation and checkpoint activities and will increase public awareness by of these DUI enforcement efforts.

Budget: \$446,496 (overtime pay, travel and training, and equipment). (projected 410 Funds)

Impaired Driving Budget Summary

Project #	Grantee Name	Budget	Budget Source
AL-09-01	Kentucky Office of Highway Safety – Alcohol Program Management	\$77,329	402
AL-09-02	Kentucky Office of Highway Safety - Alcohol P I & E	\$50,000	402
AL-09-03	Kentucky Office of Highway Safety – Alcohol Networking	\$5,000	402
AL-09-04	Kentucky Office of Highway Safety – DUI Awards Ceremony	\$22,000	402
AL-09-05	Kentucky State Police Media Relations – Community Outreach	\$20,000	402
AL-09-06	Kentucky Crime Prevention Coalition - Youth Alcohol Program Coordinator	\$86,250	402
AL-09-07	MADD Court Monitoring Program	\$67,565	402
AL-09-08	Alexandria Police Department	\$23,668	402
AL-09-09	Ashland Police Department	\$10,000	402
AL-09-10	Bourbon County Sheriff	\$7,847	402
AL-09-11	Calloway County Sheriff	\$12,442	402
AL-09-12	Covington Police Department	\$50,000	402
AL-09-13	Daviess County Sheriff	\$26,000	402
AL-09-14	Florence Police Department	\$10,000	402
AL-09-15	Franklin Police Department	\$9,770	402
AL-09-16	Georgetown Police Department	\$24,750	402
AL-09-17	Glasgow Police Department	\$20,000	402
AL-09-18	Hardin County Sheriff	\$5,000	402
AL-09-19	Harlan County Sheriff	\$9,300	402
AL-09-20	Harlan Police Department	\$13,530	402
AL-09-21	Highland Heights Police Department	\$20,000	402
AL-09-22	Hillview Police Department	\$27,145	402
AL-09-23	Kenton County Police Department	\$24,995	402
AL-09-24	Laurel County Sheriff	\$35,250	402
AL-09-25	Logan County Sheriff	\$8,870	402
AL-09-26	Ludlow Police Department	\$3,500	402
AL-09-27	Madison County Sheriff	\$35,000	402
AL-09-28	Marshall County Sheriff	\$33,178	402
AL-09-29	Mt. Washington Police Department	\$7,995	402
AL-09-30	Nelson County Sheriff	\$29,412	402
AL-09-31	New Haven Police Department	\$2,000	402
AL-09-32	Newport Police Department	\$10,000	402
AL-09-33	Paducah Police Department	\$40,000	402
AL-09-34	Paintsville Police Department	\$17,500	402
AL-09-35	Prestonsburg Police Department	\$6,150	402
AL-09-36	Pulaski County Sheriff	\$20,000	402
AL-09-37	Radcliff Police Department	\$5,000	402

Impaired Driving Budget Summary (Continued)

AL-09-38	Shepherdsville Police Department	\$12,500	402
AL-09-39	University of Kentucky Police Department	\$12,000	402
AL-09-40	Winchester Police Department	\$10,500	402
K8-09-01	Administrative Office of the Courts	\$45,500	410
K8-09-02	Kentucky Office of the Attorney General – Traffic Safety Resource Prosecutor	\$172,795	410
K8-09-03	Kentucky Department of Criminal Justice Training – Drug Evaluation & Classification	\$75,000	410
K8-09-04	Kentucky State Police Nighthawk Traffic Alcohol Program	\$446,496	410
K8PM-09-01	Impaired Driving Paid Media	\$820,000	410
	Total 402 Funds	\$911,446	
	Total 410 Funds	\$1,559,771	
	Total All Funds	\$2,471,217	

Occupant Protection Program

Project Number: OP-09-01

Project Title: Occupant Protection Program Management (Kentucky Office of Highway Safety)

Description: This grant will fund one-third of the salaries, benefits, travel and training for each of the Grants Program Managers.

Budget: \$77,329

Project Number: OP-09-02

Project Title: Occupant Protection Public Information and Education (Kentucky Office of Highway Safety)

Description: The Kentucky Office of Highway Safety will purchase educational materials to distribute in highway safety programs and events at schools and in communities across the state. Materials will also be distributed to Occupant Protection grantees. All purchased items will be printed with an occupant protection message.

Budget: \$50,000

Project Number: OP-09-03

Project Title: Occupant Protection Networking (Kentucky Office of Highway Safety)

Description: This grant is utilized to fund travel and training expenses for partners (non-Kentucky Office of Highway Safety personnel) to attend professional conferences or meetings related to the occupant protection program. It may also be used for expenses for meetings or training events sponsored by the Office.

Budget: \$5,000

Project Number: OP-09-04

Project Title: Kentucky Lifesavers Conference (Kentucky Office of Highway Safety)

Description: In 2009, Kentucky will hold the fifth state Lifesavers conference since 2005. The conference, which drew over 400 attendees last year, will offer a wide range of sessions in the areas of engineering, education, enforcement, and emergency response. Grant funds will cover planning and coordination, conference facility rental, meals, speaker fees, etc.

Budget: \$45,000

Project Number: OP-09-05

Project Title: Kentucky State Police Media Relations Branch – Occupant Protection Outreach

Description: This grant will fund the purchase of educational materials for KSP's Public Affairs Officers to use in highway safety programs at schools and community events across the state. All purchased items will be printed with an occupant protection message.

Budget: \$20,000

Project Number: OP-09-06

Project Title: University of Kentucky Transportation Center –Occupant Protection Campaign Evaluation

Description: Researchers will conduct a complete evaluation of the Memorial Day occupant protection campaign. Analysis will include collecting observational seat belt usage data at 21 “mini-sample” sites prior to and during the enforcement mobilization, as well as a series of telephone surveys to gauge public awareness of the campaign. A summary report will detail the enforcement and media activities that were conducted and will include a comparative analysis of fatality and injury data for the campaign period.

Budget: \$160,000

Project Number: OP-09-07 through OP-09-09

Project Title: Kentucky Association of Chiefs of Police—Western, Eastern, and Central LELs

Description: Each grant will fund a full-time Law Enforcement Liaison to serve as a field agent to the Kentucky Office of Highway Safety, with responsibility for designated counties within the Western, Eastern, and Central portions of the state. Each LEL will continue to serve as a resource for all types of traffic safety information, promote & facilitate agency participation in national enforcement mobilizations and events sponsored by the Office of Highway Safety, assist in monitoring law enforcement agency grantees' performance, and help coordinate traffic safety-related activities between agencies. Each grant includes personnel costs, expenses, equipment, and educational materials.

Budget: \$281,730.24

Project Number: OP-09-10

Project Title: Kentucky Crime Prevention Coalition—Northern LEL

Description: This grant will fund a part time Law Enforcement Liaison to serve as a field agent to the Kentucky Office of Highway Safety, providing services to a 16-county area in Northern Kentucky. The LEL will continue to serve as a resource for all types of traffic safety information, promote & facilitate agency participation in national enforcement mobilizations and events sponsored by the Office of Highway Safety, assist in monitoring law enforcement agency grantees' performance, and help coordinate traffic safety-related activities between agencies. Grant includes personnel costs, expenses, equipment, educational materials and administrative support.

Budget: \$82,133.56

Project Number: OP-09-11

Project Title: Kosair Children's Hospital CPS Program

Description: This grant will help support a CPS specialist/instructor and R.N. who works from Kosair Children's Hospital in Louisville, but provides CPS instruction throughout the state. In the upcoming year, this individual will host and/or serve as senior checker at car seat check up events, will teach CPS technician certification and recertification classes, will provide continuing education trainings for current technicians/instructors, and will offer classes to healthcare staff regarding seats for special needs children. She will also provide targeted educational opportunities to both adults and children regarding booster seats and will provide check up supplies as needed to agencies that have at least three certified technicians. The grant will cover partial salary and travel/training, public information and education materials and child restraint check up supplies.

Budget: \$67,300

Project Number: OP-09-12

Project Title: Marshall County Health Department CPS Program

Description: This health department will utilize funding to conduct child safety seat checkups and to instruct and certify new CPS technicians in this far western part of the state. The project director plans to provide occupant protection education to school children and to the general public, including the implementation of a booster seat education program for preschools.

Budget: \$17,050

Project Number: OP-09-13

Project Title: Pike County Health Department CPS Program/Alternative Sentencing

Description: This grant will continue a project that began in 2002 to increase child restraint usage and decrease misuse in eastern Kentucky. In the upcoming grant year, the project director

will collaborate with area law enforcement and fire personnel to maintain and expand the number of permanent fitting stations and to increase the number of CPS technicians in a five-county area of eastern Kentucky. The successful alternative sentencing program for child restraint violators in Pike County will be continued. The project will also target problem populations by implementing a “Battle of the Belts” program in Pike County High Schools and by conducting booster seat education for students in all Pike County Head Start and kindergarten classes.
Budget: \$13,560

Project Number: OP-09-14 through OP-09-29

Project Title: Local Law Enforcement Occupant Protection Programs

Description: These grants will allow 16 local agencies to work overtime enforcement focusing on occupant protection in the following counties: Ballard, Breathitt, Fleming, Fulton, Garrard, Graves, Knox, Logan, Mason, Monroe, Nicholas, Powell, Rowan and Wayne. Many of these grant awards will include funding the agencies to purchase traffic enforcement equipment. Additionally, grant budgets will include funding for personnel to attend the 2009 Kentucky Lifesavers Conference.

Budget: \$176,190

Project Number: K2PM-09-01, K4PM-09-01

Project Title: Occupant Protection Paid Media

Description: These funds will be used to develop & run a statewide occupant protection media campaign supporting the national Click it or Ticket campaign in May 2009. The following media formats will be considered for reaching target audiences: network & cable television, radio, billboards and other print ads, and messaging at sporting venues. Media markets serving low safety belt usage areas will be emphasized.

Budget: \$513,000 (405 & 406 funds)

Occupant Protection Budget Summary

Project Number	Grantee Name	Budget	Budget Source
OP-09-01	Kentucky Office of Highway Safety - Occupant Protection Program Management	\$77,329	402
OP-09-02	Kentucky Office of Highway Safety - Occupant Protection Public Information and Education	\$50,000	402
OP-09-03	Kentucky Office of Highway Safety - Occupant Protection Networking	\$5,000	402
OP-09-04	Kentucky Office of Highway Safety - Kentucky Lifesavers Conference	\$45,000	402
OP-09-05	Kentucky State Police Media Relations Branch - Occupant Protection Outreach	\$20,000	402
OP-09-06	University of Kentucky Transportation Center - Seat Belt Campaign Evaluation	\$160,000	402
OP-09-07	Kentucky Association of Chiefs of Police - Central region Law Enforcement Liaison	\$101,798.04	402
OP-09-08	Kentucky Association of Chiefs of Police - Eastern region Law Enforcement Liaison	\$89,500.04	402
OP-09-09	Kentucky Association of Chiefs of Police - Western region Law Enforcement Liaison	\$90,432.16	402
OP-09-10	Kentucky Crime Prevention Coalition - Northern region Law Enforcement Liaison	\$82,133.56	402
OP-09-11	Kosair Children's Hospital – CPS Program	\$67,300	402
OP-09-12	Marshall County Health Department - CPS Program	\$17,050	402
OP-09-13	Pike County Health Department - CPS Program/Alternative Sentencing	\$13,560	402
OP-09-14	Ballard County Sheriff	\$9,000	402
OP-09-15	Barbourville Police Department	\$10,000	402
OP-09-16	Carlisle Police Department	\$13,920	402
OP-09-17	Clay City Police Department	\$4,000	402
OP-09-18	Flemingsburg Police Department	\$4,000	402
OP-09-19	Fulton Police Department	\$5,000	402
OP-09-20	Garrard County Sheriff	\$10,000	402
OP-09-21	Jackson Police Department	\$12,000	402
OP-09-22	Lancaster Police Department	\$15,000	402
OP-09-23	Mason County Sheriff	\$17,000	402
OP-09-24	Mayfield Police Department	\$6,500	402
OP-09-25	Morehead Police Department	\$11,600	402
OP-09-26	Russellville Police Department	\$15,000	402
OP-09-27	Stanton Police Department	\$6,000	402
OP-09-28	Tompkinsville Police Department	\$18,510	402
OP-09-29	Wayne County Sheriff	\$18,660	402

Occupant Protection Budget Summary (Continued)

K2PM-09-01	Occupant Protection/Click It or Ticket Paid Media	\$63,000	405
K4PM-09-01	Occupant Protection/Click It or Ticket Paid Media	\$450,000	406
	Total 402	\$995,292.80	
	Total 405	\$63,000	
	Total 406	\$450,000	
	Total all funds	\$1,508,292.80	

Police Traffic Services Program

Project Number: PT-09-01

Project Title: Police Traffic Services Program Management (Kentucky Office of Highway Safety)

Description: This grant will fund one-third of the salaries, benefits, travel and training for each of the Grants Program Managers.

Budget: \$79,672

Project Number: PT-09-02

Project Title: PTS Public Information and Education (Kentucky Office of Highway Safety)

Description: The Kentucky Office of Highway Safety will purchase educational materials to distribute in highway safety programs and events at schools and in communities across the state. Materials will also be distributed to Police Traffic Services grantees. All purchased items will be printed with highway safety messages related to speeding and other aggressive driving behaviors, distracted driving, young drivers, and other topics.

Budget: \$50,000

Project Number: PT-09-03

Project Title: PTS Networking (Kentucky Office of Highway Safety)

Description: This grant is utilized to fund travel and training expenses for partners (non-Kentucky Office of Highway Safety personnel) to attend professional conferences or meetings related to the Police Traffic Services program. It may also be used for expenses for meetings or training events sponsored by the Department.

Budget: \$15,000

Project Number: PT-09-04

Project Title: SPEED Selective Traffic Enforcement Program (Kentucky State Police)

Description: KSP will use a selective enforcement approach directed toward violations that contribute to fatality and serious injury crashes. Locations will be identified within each KSP post area where there is a high rate of injury or fatal collisions or speed violations, and enforcement details will be set up to monitor these spots. Enforcement will also be emphasized in counties that have a high number of speeding-related crashes.

Budget: \$392,640

Project Number: PT-09-05

Project Title: Kentucky Crime Prevention Coalition—Highway Safety Clearinghouse

Description: This grantee will continue to maintain a clearinghouse of traffic safety resources such as brochures, bookmarks, lesson plans, presentations, coloring books, etc. that can be utilized by law enforcement agencies, health departments, safety coalitions, and citizens. KCPC furnishes these materials free of charge upon request through an order form on its web site www.kycrimeprevention.com. Materials stocked will cover the following topics: occupant protection, bicycle safety, pedestrian safety, aggressive driving, distracted driving and impaired driving.

Budget: \$25,000

Project Number: PT-09-06 through PT-09-46

Project Title: Local Law Enforcement Police Traffic Services Programs

Description: These grants will allow 40 local agencies to work overtime enforcement focusing on speeding or multiple traffic safety issues in the following counties: Anderson, Bell, Boone, Bourbon, Boyd, Boyle, Campbell, Clark, Daviess, Fayette, Franklin, Grant, Grayson, Greenup, Hancock, Hardin, Hopkins, Jefferson, Jessamine, Johnson, Kenton, Laurel, Lyon, Madison, McCracken, Ohio, Oldham, Pulaski, Shelby, Trigg and Warren. Many of the grant awards include budgets for the purchase of traffic enforcement equipment. Additionally, grant budgets will include funding for personnel to attend the 2009 Kentucky Lifesavers Conference.

Budget: \$775,877

Police Traffic Services Budget Summary

Project #	Grantee Name	Budget	Budget Source
PT-09-01	Kentucky Office of Highway Safety - PTS Program Management	\$79,672	402
PT-09-02	Kentucky Office of Highway Safety - PTS PI & E	\$50,000	402
PT-09-03	Kentucky Office of Highway Safety - PTS Networking	\$15,000	
PT-09-04	Kentucky State Police - SPEED Selective Traffic Enforcement Program	\$392,640	402
PT-09-05	Kentucky Crime Prevention Coalition - Highway Safety Clearinghouse	\$25,000	402
PT-09-06	Anchorage Police Department	\$25,000	402
PT-09-07	Berea Police Department	\$14,000	402
PT-09-08	Boone County Sheriff	\$25,000	402
PT-09-09	Bowling Green Police Department	\$7,500	402
PT-09-10	Boyd County Sheriff	\$17,000	402
PT-09-11	Cadiz Police Department	\$14,240	402
PT-09-12	Campbell County Police Department	\$23,500	402
PT-09-13	Clark County Sheriff	\$16,340	402
PT-09-14	Cold Spring Police Department	\$5,000	402
PT-09-15	Danville Police Department	\$20,000	402
PT-09-16	Eddyville Police Department	\$9,310	402
PT-09-17	Elizabethtown Police Department	\$15,000	402
PT-09-18	Erlanger Police Department	\$22,795	402
PT-09-19	Flatwoods Police Department	\$12,325	402
PT-09-20	Frankfort Police Department	\$65,000	402
PT-09-21	Grant County Sheriff	\$5,000	402
PT-09-22	Grayson County Sheriff	\$18,000	402
PT-09-23	Hancock County Sheriff	\$8,170	402
PT-09-24	Independence Police Department	\$20,000	402
PT-09-25	Johnson County Sheriff	\$18,000	402
PT-09-26	Junction City Police Department	\$6,000	402
PT-09-27	Lawrenceburg Police Department	\$10,000	402
PT-09-28	Leitchfield Police Department	\$7,700	402
PT-09-29	Lexington Police Department	\$40,000	402
PT-09-30	London Police Department	\$32,705	402
PT-09-31	Louisville Metro Police Department	\$100,000	402
PT-09-32	Madisonville Police Department	\$33,230	402
PT-09-33	McCracken County Sheriff	\$32,300	402
PT-09-34	Middlesboro Police Department	\$16,830	402
PT-09-35	Ohio County Sheriff	\$9,725	402
PT-09-36	Oldham County Police Department	\$15,000	402
PT-09-37	Owensboro Police Department	\$8,400	402
PT-09-38	Paris Police Department	\$10,657	402
PT-09-39	Park Hills Police Department	\$6,000	402

Police Traffic Services Budget Summary Continued

PT-09-40	Raceland Police Department	\$8,850	402
PT-09-41	Richmond Police Department	\$20,000	402
PT-09-42	Shelby County Sheriff	\$10,300	402
PT-09-43	Shively Police Department	\$25,000	402
PT-09-44	Somerset Police Department	\$10,400	402
PT-09-45	Williamstown Police Department	\$6,600	402
PT-09-46	Wilmore Police Department	\$5,000	402
	Total 402	\$1,338,189	
	Total All Funds	\$1,338,189	

Planning & Administration Program

Project Number: PA-09-01

Project Title: Kentucky Office of Highway Safety Planning & Administration

Description: Includes 50% of salaries & benefits for several staff members of the Office's Division of Highway Safety Programs, Grants Management Branch, as well as 50% funding for travel & training, office supplies, postage, professional dues and subscriptions.

Budget: \$121,335.00

Motorcycle Safety Program

Project Number: K6-09-HP

Project Title: Motorcycle Safety Awareness Project

Description: These funds will help pay for public relations campaigns to make motorists and motorcyclists aware of the situations that increase the likelihood of crashes and to promote actions that all drivers can take to help avoid crashes involving motorcycles. The safety messages will be disseminated mostly through radio, but also through brochures, posters and outdoor banners. Media will be concentrated in high-risk motorcycle crash areas across the state.

Budget: \$151,500 (2010 estimated funds)

Safe Communities Program

Project Number: SA-09-01

Project Title: Madison County Health Department Traffic Safety Education Program

Description: This project, which is in its seventh year, will continue to implement a program of traffic safety in the community, in local schools and colleges, and through Health Department programs. In doing so, the Health Department will head the Madison County Safety Coalition and will collaborate with a number of civic and educational organizations, law enforcement agencies, the faith-based community and others, including Children's Champions, Life Choices, the Madison County Extension Service, SAFE KIDS, and Eastern Kentucky University Baccalaureate Nursing Program. Educational and outreach efforts will seek to reach all segments of the population and will emphasize three areas: seat belt and child passenger restraint use (including a campaign focused on buckling up children in the back seat), the risks associated with alcohol, and bicycle/pedestrian safety. The project includes gathering local seat belt usage data through quarterly observational surveys and maintaining CPS fitting stations at Health Department facilities in Berea and Richmond.

Budget: \$49,050 (salaries and benefits, educational materials and supplies)

Pedestrian & Bicycle Safety Program

Project Number: PS-09-01

Project Title: Kosair Children's Hospital - B.I.K.E.S. (Behaviors Illustrating Knowledge that Ensures Safety) Project

Project Description: This program is designed to teach bicycle safety skills to children ages 6-14 by having them participate in bicycle rodeos that simulate real-life traffic situations where children must make decisions and demonstrate their skills and knowledge of bicycle safety. The program emphasizes the importance of always wearing a helmet when riding a bicycle, maintaining awareness of surroundings and obeying the rules of the road. A pedestrian program is conducted for children in grades K-3. The grant funding will enable a bicycle safety consultant to present 150 bicycle rodeos/pedestrian programs in elementary and middle schools throughout the state. Summer programs will also be conducted through venues including 4-H, church and scout camps.

Budget: \$56,800

Accident Investigation Program

Project Number: AI-09-01

Project Title: KSP Accident Reconstruction Program

Project Description: This grant will provide funding to the Kentucky State Police's Traffic Accident Reconstruction Program, which provides full-service collision investigation and analysis for the agency, as well as for any law enforcement agency in Kentucky who requests assistance. The work of the reconstructionists drastically reduce road closure time, provide complete investigations, and provide expert testimony and knowledge to any law enforcement agency within the Commonwealth, directly contributing to the analysis and reduction of motor vehicle collisions and deaths. Specifically, the grant will provide funding for (4) analyst/trainers to attend Crash Data Recovery (CDR) training and purchase two CDR update kits for their program.

Budget: \$11,000

Roadway Safety Program

Project Number: RS-09-01

Project Title: University of Kentucky—Crash Analysis

Description: The University of Kentucky Transportation Center will continue to analyze data from the statewide CRASH (Collision Report Analysis for Safer Highways) database to develop two publications that are widely used by highway safety professionals and researchers. *Analysis of Traffic Crash Data in Kentucky* is a compilation of five years of statewide and county crash data, organized into dozens of reference tables. *Kentucky Collision Facts* presents characteristics of crashes for the most recent year and includes information such as driver age and sex, contributing factors, restraint usage in crashes, and types of vehicles involved.

Budget: \$60,000

Traffic Records Program

Project Number: TR-09-01

Project Title: Traffic Records Program Management (Kentucky Office of Highway Safety)

Description: Includes salaries & benefits for two staff members of the Office’s Division of Highway Safety Programs, funding for travel & training, professional dues and subscriptions. This specifically pays for personnel who supply traffic records analysis to all safety partners, internal and external.

Budget: \$124,000

Project Number: TR-09-02

Project Title: Traffic Records Networking (Kentucky Office of Highway Safety)

Description: This grant is utilized to fund travel and training expenses for partners (non-Kentucky Office of Highway Safety personnel) to attend professional conferences or meetings related to the Traffic Records program. It may also be used to pay for expenses for meetings or training events sponsored by the Kentucky Office of Highway Safety.

Budget: \$2,500

Project Number: TR-09-03

Project Title: Emergency Department Data Collection (Kentucky Hospital Association)

Description: The Kentucky Hospital Association will implement the statewide collection and computerization of Emergency Department (ED) visits from Kentucky hospitals and will disseminate reports on motor vehicle-related ED visits to a wide variety of stakeholders, including the Kentucky CODES project. This data will be used to evaluate motor vehicle crash outcomes and to determine which measures and programs are working, or not working, to make the best use of limited traffic safety resources. The key to reliable outcome evaluation is complete and accurate data about the circumstances of crashes and the medical outcomes for persons involved in these crashes.

Budget: \$150,000

Traffic Records Program Budget Summary

Project Number	Project Title	Budget	Budget Source
TR-09-01	Kentucky Office of Highway Safety - Traffic Records Program Management	\$124,000	402
TR-09-02	Kentucky Office of Highway Safety - Traffic Records Networking	\$2,500	402
TR-09-03	Kentucky Hospital Association - Emergency Department	\$150,000	402
	Total All Funds (402)	\$276,500	

STATE CERTIFICATIONS AND ASSURANCES

Failure to comply with applicable Federal statutes, regulations and directives may subject State officials to civil or criminal penalties and/or place the State in a high risk grantee status in accordance with 49 CFR §18.12.

Each fiscal year the State will sign these Certifications and Assurances that the State complies with all applicable Federal statutes, regulations, and directives in effect with respect to the periods for which it receives grant funding. Applicable provisions include, but not limited to, the following:

- 23 U.S.C. Chapter 4 - Highway Safety Act of 1966, as amended;
- 49 CFR Part 18 - Uniform Administrative Requirements for Grants and Cooperative Agreements to State and Local Governments
- 49 CFR Part 19 - Uniform Administrative Requirements for Grants and Agreements with Institutions of Higher Education, Hospitals and Other Nonprofit Organizations
- 23 CFR Chapter II - (§§1200, 1205, 1206, 1250, 1251, & 1252) Regulations governing highway safety programs
- NHTSA Order 462-6C - Matching Rates for State and Community Highway Safety Programs
- Highway Safety Grant Funding Policy for Field-Administered Grants

Certifications and Assurances

The Governor is responsible for the administration of the State highway safety program through a State highway safety agency which has adequate powers and is suitably equipped and organized (as evidenced by appropriate oversight procedures governing such areas as procurement, financial administration, and the use, management, and disposition of equipment) to carry out the program (23 USC 402(b) (1) (A));

The political subdivisions of this State are authorized, as part of the State highway safety program, to carry out within their jurisdictions local highway safety programs which have been approved by the Governor and are in accordance with the uniform guidelines promulgated by the Secretary of Transportation (23 USC 402(b) (1) (B));

At least 40 per cent of all Federal funds apportioned to this State under 23 USC 402 for this fiscal year will be expended by or for the benefit of the political subdivision of the State in carrying out local highway safety programs (23 USC 402(b) (1) (C)), unless this requirement is waived in writing;

The State will implement activities in support of national highway safety goals to reduce motor vehicle related fatalities that also reflect the primary data-related crash factors within the State as identified by the State highway safety planning process, including:

- **National law enforcement mobilizations,**
- **Sustained enforcement of statutes addressing impaired driving, occupant protection, and driving in excess of posted speed limits,**
- **An annual statewide safety belt use survey in accordance with criteria established by the Secretary for the measurement of State safety belt use rates to ensure that the measurements are accurate and representative,**
- **Development of statewide data systems to provide timely and effective data analysis to support allocation of highway safety resources.**

The State shall actively encourage all relevant law enforcement agencies in the State to follow the guidelines established for vehicular pursuits issued by the International Association of Chiefs of Police that are currently in effect.

This State's highway safety program provides adequate and reasonable access for the safe and convenient movement of physically handicapped persons, including those in wheelchairs, across curbs constructed or replaced on or after July 1, 1976, at all pedestrian crosswalks (23 USC 402(b) (1) (D));

Cash drawdowns will be initiated only when actually needed for disbursement, cash disbursements and balances will be reported in a timely manner as required by NHTSA, and the same standards of timing and amount, including the reporting of cash disbursement and balances, will be imposed upon any secondary recipient organizations (49 CFR 18.20, 18.21, and 18.41). Failure to adhere to these provisions may result in the termination of drawdown privileges);

The State has submitted appropriate documentation for review to the single point of contact designated by the Governor to review Federal programs, as required by Executive Order 12372 (Intergovernmental Review of Federal Programs);

Equipment acquired under this agreement for use in highway safety program areas shall be used and kept in operation for highway safety purposes by the State; or the State, by formal agreement with appropriate officials of a political subdivision or State agency, shall cause such equipment to be used and kept in operation for highway safety purposes (23 CFR 1200.21);

The State will comply with all applicable State procurement procedures and will maintain a financial management system that complies with the minimum requirements of 49 CFR 18.20;

The State highway safety agency will comply with all Federal statutes and implementing regulations relating to nondiscrimination. These include but are not limited to: (a) Title VI of the Civil Rights Act of 1964 (P.L. 88-352) which prohibits discrimination on the basis of race, color or national origin (and 49 CFR Part 21); (b) Title IX of the Education Amendments of 1972, as amended (20 U.S.C. §§ 1681-1683, and 1685-1686), which prohibits discrimination on the basis of sex; (c) Section 504 of the Rehabilitation Act of

1973, as amended (29 U.S.C. §794), which prohibits discrimination on the basis of handicaps (and 49 CFR Part 27); (d) the Age Discrimination Act of 1975, as amended (42U.S.C. §§ 6101-6107), which prohibits discrimination on the basis of age; (e) the Drug Abuse Office and Treatment Act of 1972 (P.L. 92-255), as amended, relating to nondiscrimination on the basis of drug abuse; (f) the comprehensive Alcohol Abuse and Alcoholism Prevention, Treatment and Rehabilitation Act of 1970(P.L. 91-616), as amended, relating to nondiscrimination on the basis of alcohol abuse of alcoholism; (g) §§ 523 and 527 of the Public Health Service Act of 1912 (42 U.S.C. §§ 290 dd-3 and 290 ee-3), as amended, relating to confidentiality of alcohol and drug abuse patient records; (h) Title VIII of the Civil Rights Act of 1968 (42 U.S.C. §§ 3601 et seq.), as amended, relating to nondiscrimination in the sale, rental or financing of housing; (i) any other nondiscrimination provisions in the specific statute(s) under which application for Federal assistance is being made; and, (j) the requirements of any other nondiscrimination statute(s) which may apply to the application.

The Drug-free Workplace Act of 1988(49 CFR Part 29 Sub-part F):

The State will provide a drug-free workplace by:

- a) Publishing a statement notifying employees that the unlawful manufacture, distribution, dispensing, possession or use of a controlled substance is prohibited in the grantee's workplace and specifying the actions that will be taken against employees for violation of such prohibition;
- b) Establishing a drug-free awareness program to inform employees about:
 - 1) The dangers of drug abuse in the workplace.
 - 2) The grantee's policy of maintaining a drug-free workplace.
 - 3) Any available drug counseling, rehabilitation, and employee assistance programs.
 - 4) The penalties that may be imposed upon employees for drug violations occurring in the workplace.
- c) Making it a requirement that each employee engaged in the performance of the grant be given a copy of the statement required by paragraph (a).
- d) Notifying the employee in the statement required by paragraph (a) that, as a condition of employment under the grant, the employee will—
 - 1) Abide by the terms of the statement.
 - 2) Notify the employer of any criminal drug statute conviction for a violation occurring in the workplace no later than five days after such conviction.
- e) Notifying the agency within ten days after receiving notice under subparagraph

- (d) (2) from an employee or otherwise receiving actual notice of such conviction.
- f) Taking one of the following actions, within 30 days of receiving notice under subparagraph (d) (2), with respect to any employee who is so convicted -
- 1) Taking appropriate personnel action against such an employee, up to and including termination.
 - 2) Requiring such employee to participate satisfactorily in a drug abuse assistance or rehabilitation program approved for such purposes by a Federal, State, or local health, law enforcement, or other appropriate agency.
- g) Making a good faith effort to continue to maintain a drug-free workplace through implementation of paragraphs (a), (b), (c), (d), (e), and (f) above.

BUY AMERICA ACT

The State will comply with the provisions of the Buy America Act (23 USC 101 Note) which contains the following requirements:

Only steel, iron and manufactured products produced in the United States may be purchased with Federal funds unless the Secretary of Transportation determines that such domestic purchases would be inconsistent with the public interest; that such materials are not reasonably available and of a satisfactory quality; or that inclusion of domestic materials will increase the cost of the overall project contract by more than 25 percent. Clear justification for the purchase of non-domestic items must be in the form of a waiver request submitted to and approved by the Secretary of Transportation.

POLITICAL ACTIVITY (HATCH ACT).

The State will comply with the provisions of 5 U.S.C. §§ 1501-1508 and implementing regulations of 5 CFR Part 151, concerning “Political Activity of State or Local Offices, or Employees”.

CERTIFICATION REGARDING FEDERAL LOBBYING

Certification for Contracts, Grants, Loans, and Cooperative Agreements

The undersigned certifies, to the best of his or her knowledge and belief, that:

(1) No Federal appropriated funds have been paid or will be paid, by or on behalf of the undersigned, to any person for influencing or attempting to influence an officer or employee of any agency, a Member of Congress, an officer or employee of Congress, or an employee of a Member of Congress in connection with the awarding of any Federal contract, the making of any Federal grant, the making of any Federal loan, the entering into of any cooperative agreement, and the extension, continuation, renewal, amendment, or modification of any Federal contract, grant, loan, or cooperative agreement.

(2) If any funds other than Federal appropriated funds have been paid or will be paid to any person for influencing or attempting to influence an officer or employee of any agency, a Member of Congress, an officer or employee of Congress, or an employee of a Member of Congress in connection with this Federal contract, grant, loan, or cooperative agreement, the undersigned shall complete and submit Standard Form-LLL, “Disclosure Form to Report Lobbying,” in accordance with its instructions.

(3) The undersigned shall require that the language of this certification be included in the award documents for all sub-award at all tiers (including subcontracts, subgrants, and contracts under grant, loans, and cooperative agreements) and that all subrecipients shall certify and disclose accordingly.

This certification is a material representation of fact upon which reliance was placed when this transaction was made or entered into. Submission of this certification is a prerequisite for making or entering into this transaction imposed by section 1352, title 31, U.S. Code. Any person who fails to file the required certification shall be subject to a civil penalty of not less than \$10,000 and not more than \$100,000 for each such failure.

RESTRICTION ON STATE LOBBYING

None of the funds under this program will be used for any activity specifically designed to urge or influence a State or local legislator to favor or oppose the adoption of any specific legislative proposal pending before any State or local legislative body. Such activities include both direct and indirect (e.g., “grassroots”) lobbying activities, with one exception. This does not preclude a State official whose salary is supported with NHTSA funds from engaging in direct communications with State or local legislative officials, in accordance with customary State practice, even if such communications urge legislative officials to favor or oppose the adoption of a specific pending legislative proposal.

CERTIFICATION REGARDING DEBARMENT AND SUSPENSION

Instructions for Primary Certification

1. By signing and submitting this proposal, the prospective primary participant is providing the certification set out below.
2. The inability of a person to provide the certification required below will not necessarily result in denial of participation in this covered transaction. The prospective participant shall submit an explanation of why it cannot provide the certification set out below. The certification or explanation will be considered in connection with the department or agency's determination whether to enter into this transaction. However, failure of the prospective primary participant to furnish a certification or an explanation shall disqualify such person from participation in this transaction.
3. The certification in this clause is a material representation of fact upon which reliance was placed when the department or agency determined to enter into this transaction. If it is later determined that the prospective primary participant knowingly rendered an erroneous certification, in addition to other remedies available to the Federal Government, the department or agency may terminate this transaction for cause or default.
4. The prospective primary participant shall provide immediate written notice to the department or agency to which this proposal is submitted if at any time the prospective primary participant learns its certification was erroneous when submitted or has become erroneous by reason of changed circumstances.
5. The terms *covered transaction*, *debarred*, *suspended*, *ineligible*, *lower tier covered transaction*, *participant*, *person*, *primary covered transaction*, *principal*, *proposal*, and *voluntarily excluded*, as used in this clause, have the meaning set out in the Definitions and coverage sections of 49 CFR Part 29. You may contact the department or agency to which this proposal is being submitted for assistance in obtaining a copy of those regulations.
6. The prospective primary participant agrees by submitting this proposal that, should the proposed covered transaction be entered into, it shall not knowingly enter into any lower tier covered transaction with a person who is proposed for debarment under 48 CFR Part 9, subpart 9.4, debarred, suspended, declared ineligible, or voluntarily excluded from participation in this covered transaction, unless authorized by the department or agency entering into this transaction.
7. The prospective primary participant further agrees by submitting this proposal that it will include the clause titled "Certification Regarding Debarment, Suspension, Ineligibility and Voluntary Exclusion-Lower Tier Covered Transaction," provided by the department or agency entering into this covered transaction, without modification, in all lower tier covered transactions and in all solicitations for lower tier covered transactions.
8. A participant in a covered transaction may rely upon a certification of a prospective participant in a lower tier covered transaction that it is not proposed for debarment under 48 CFR Part 9, subpart 9.4, debarred, suspended, ineligible, or voluntarily excluded from the covered transaction, unless it knows that the certification is erroneous. A participant may decide the method and frequency by which it determines the eligibility of its principals. Each participant may, but is not required to, check the list of Parties Excluded from Federal Procurement and Non-procurement Programs.

9. Nothing contained in the foregoing shall be construed to require establishment of a system of records in order to render in good faith the certification required by this clause. The knowledge and information of a participant is not required to exceed that which is normally possessed by a prudent person in the ordinary course of business dealings.

10. Except for transactions authorized under paragraph 6 of these instructions, if a participant in a covered transaction knowingly enters into a lower tier covered transaction with a person who is proposed for debarment under 48 CFR Part 9, subpart 9.4, suspended, debarred, ineligible, or voluntarily excluded from participation in this transaction, in addition to other remedies available to the Federal Government, the department or agency may terminate this transaction for cause or default.

Certification Regarding Debarment, Suspension, and Other Responsibility Matters- Primary Covered Transactions

(1) The prospective primary participant certifies to the best of its knowledge and belief, that its principals:

(a) Are not presently debarred, suspended, proposed for debarment, declared ineligible, or voluntarily excluded by any Federal department or agency;

(b) Have not within a three-year period preceding this proposal been convicted of or had a civil judgment rendered against them for commission of fraud or a criminal offense in connection with obtaining, attempting to obtain, or performing a public (Federal, State or local) transaction or contract under a public transaction; violation of Federal or State antitrust statutes or commission of embezzlement, theft, forgery, bribery, falsification or destruction of record, making false statements, or receiving stolen property;

(c) Are not presently indicted for or otherwise criminally or civilly charged by a governmental entity (Federal, State or Local) with commission of any of the offenses enumerated in paragraph (1)(b) of this certification; and

(d) Have not within a three-year period preceding this application/proposal had one or more public transactions (Federal, State, or local) terminated for cause or default.

(2) Where the prospective primary participant is unable to certify to any of the Statements in this certification, such prospective participant shall attach an explanation to this proposal.

Instructions for Lower Tier Certification

1. By signing and submitting this proposal, the prospective lower tier participant is providing the certification set out below.

2. The certification in this clause is a material representation of fact upon which reliance was placed when this transaction was entered into. If it is later determined that the prospective lower tier participant knowingly rendered an erroneous certification, in addition to other remedies available to the Federal government, the department or agency with which this transaction originated may pursue available remedies, including suspension and/or debarment.

3. The prospective lower tier participant shall provide immediate written notice to the person to which this proposal is submitted if at any time the prospective lower tier

participant learns that its certification was erroneous when submitted or has become erroneous by reason of changed circumstances.

4. The terms *covered transaction, debarred, suspended, ineligible, lower tier covered transaction, participant, person, primary covered transaction, principal, proposal, and voluntarily excluded*, as used in this clause, have the meanings set out in the Definition and Coverage sections of 49 CFR Part 29. You may contact the person to whom this proposal is submitted for assistance in obtaining a copy of those regulations.

5. The prospective lower tier participant agrees by submitting this proposal that, should the proposed covered transaction be entered into, it shall not knowingly enter into any lower tier covered transaction with a person who is proposed for debarment under 48 CFR Part 9, subpart 9.4, debarred, suspended, declared ineligible, or voluntarily excluded from participation in this covered transaction, unless authorized by the department or agency with which this transaction originated.

6. The prospective lower tier participant further agrees by submitting this proposal that it will include the clause titled “Certification Regarding Debarment, Suspension, Ineligibility and Voluntary Exclusion—Lower Tier Covered Transaction,” without modification, in all lower tier covered transactions and in all solicitations for lower tier covered transactions. (See below)

7. A participant in a covered transaction may rely upon a certification of a prospective participant in a lower tier covered transaction that it is not proposed for debarment under 48 CFR Part 9, subpart 9.4, debarred, suspended, ineligible, or voluntarily excluded from the covered transaction, unless it knows that the certification is erroneous. A participant may decide the method and frequency by which it determines the eligibility of its principals. Each participant may, but is not required to, check the List of Parties Excluded from Federal Procurement and Non-procurement Programs.

8. Nothing contained in the foregoing shall be construed to require establishment of a system of records in order to render in good faith the certification required by this clause. The knowledge and information of a participant is not required to exceed that which is normally possessed by a prudent person in the ordinary course of business dealings.

9. Except for transactions authorized under paragraph 5 of these instructions, if a participant in a covered transaction knowingly enters into a lower tier covered transaction with a person who is proposed for debarment under 48 CFR Part 9, subpart 9.4, suspended, debarred, ineligible, or voluntarily excluded from participation in this transaction, in addition to other remedies available to the Federal government, the department or agency with which this transaction originated may pursue available remedies, including suspension and/or debarment.

*Certification Regarding Debarment, Suspension, Ineligibility and Voluntary Exclusion—
Lower Tier Covered Transactions:*

1. The prospective lower tier participant certifies, by submission of this proposal, that neither it nor its principals is presently debarred, suspended, proposed for debarment, declared ineligible, or voluntarily excluded from participation in this transaction by any Federal department or agency.

2. Where the prospective lower tier participant is unable to certify to any of the statements in this certification, such prospective participant shall attach an explanation to this proposal.

ENVIRONMENTAL IMPACT

The Governor's Representative for Highway Safety has reviewed the State's Fiscal Year **2009** highway safety planning document and hereby declares that no significant environmental impact will result from implementing this Highway Safety Plan. If, under a future revision, this Plan will be modified in such a manner that a project would be instituted that could affect environmental quality to the extent that a review and statement would be necessary, this office is prepared to take the action necessary to comply with the National Environmental Policy Act of 1969 (42 USC 4321 et seq.) and the implementing regulations of the Council on Environmental Quality (40 CFR Parts 1500-1517).



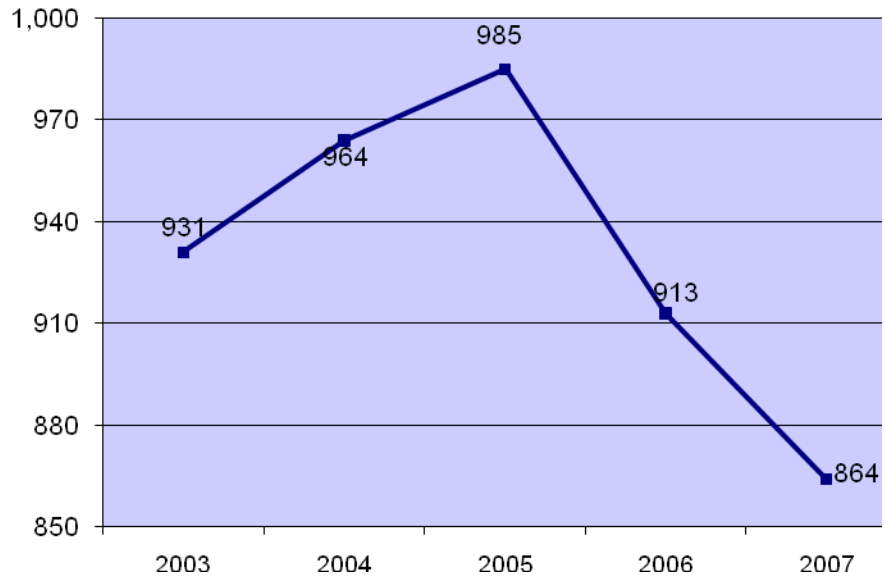
**Joseph W. Prather, Secretary
Kentucky Transportation Cabinet
and Governor's Representative for Highway Safety**

8/28/08
Date

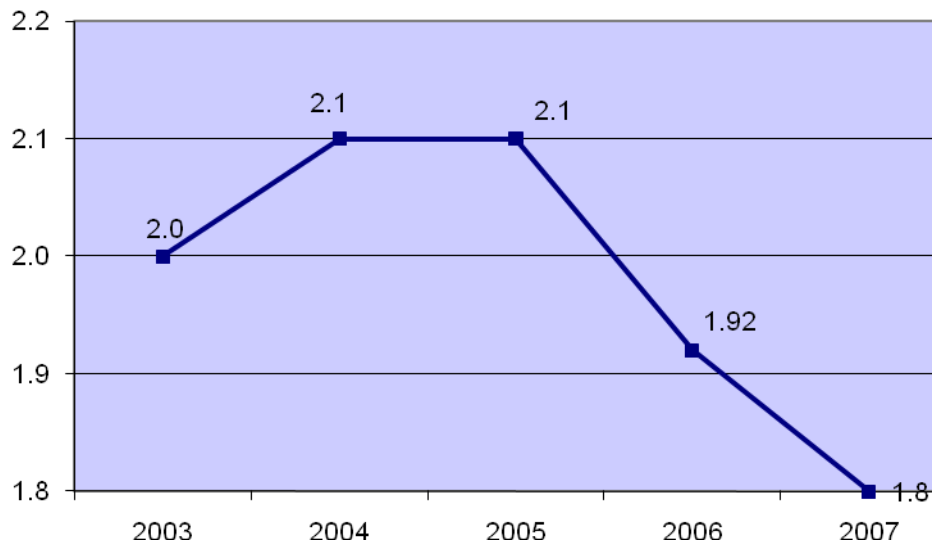
APPENDIX

CRASH DATA TRENDS

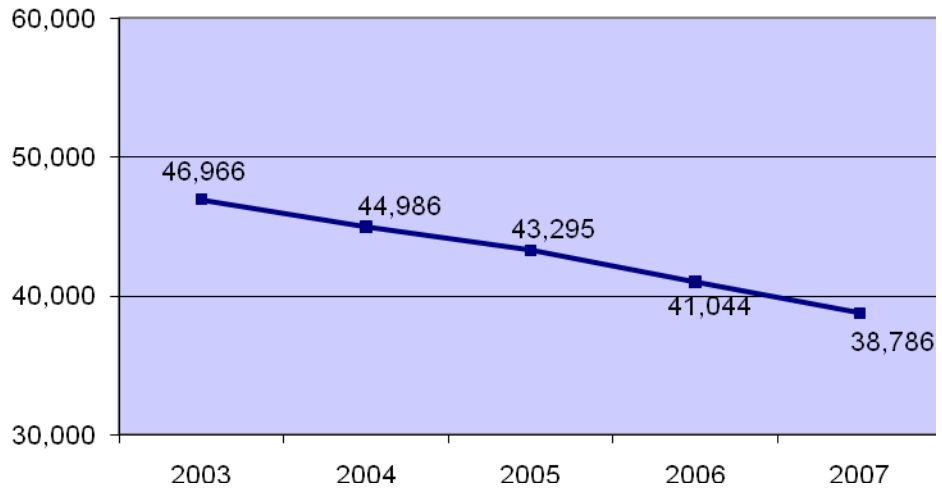
Fatalities



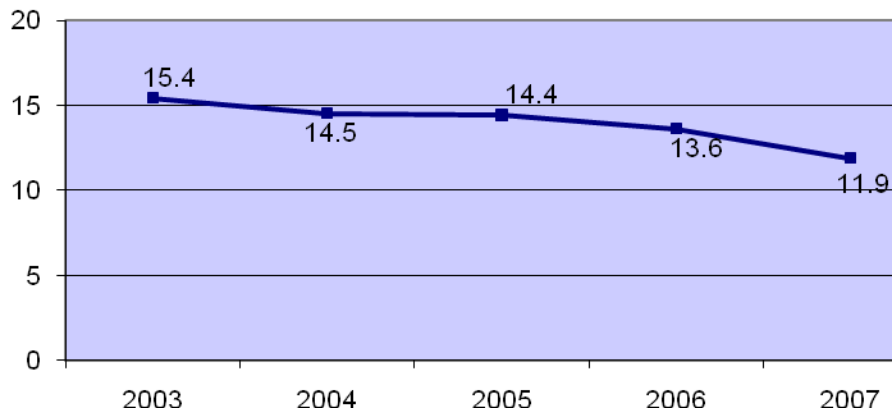
Fatality Rate per 100 Million Vehicle Miles Traveled



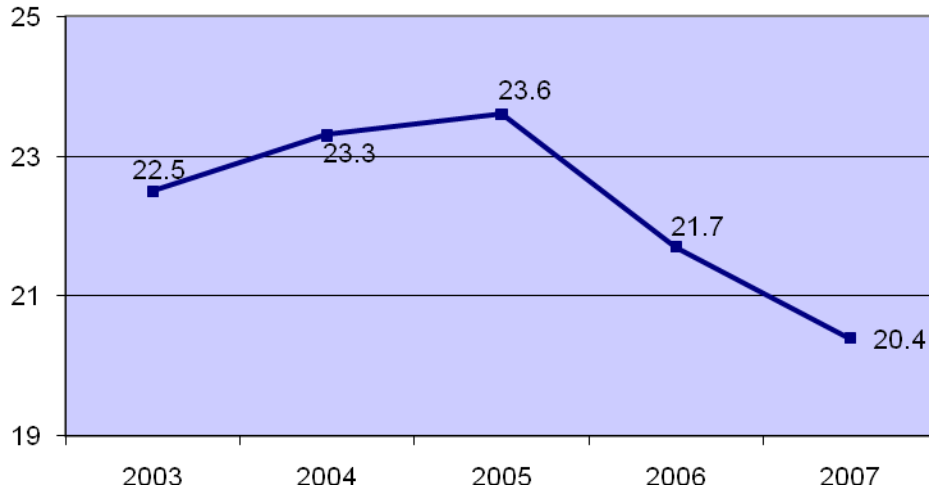
Injuries



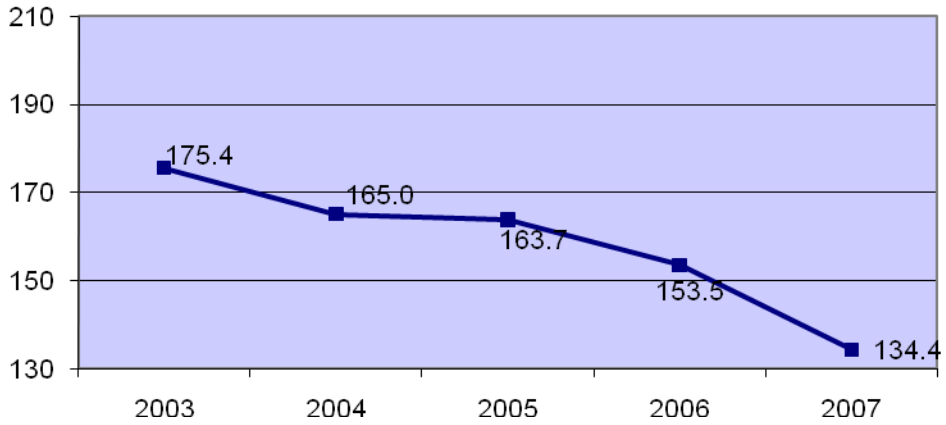
Fatality & Serious Injury Rate Per 100 Million Vehicle Miles Traveled



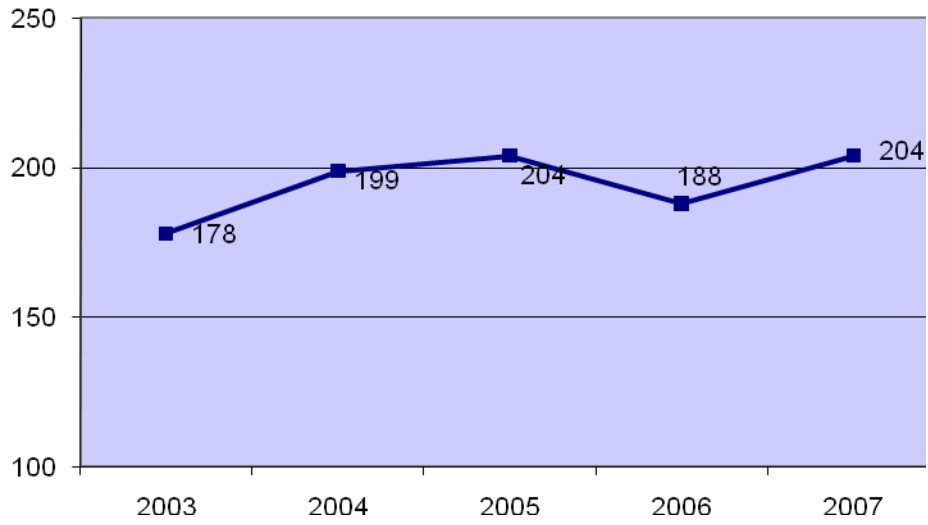
Fatality Rate Per 100K Population



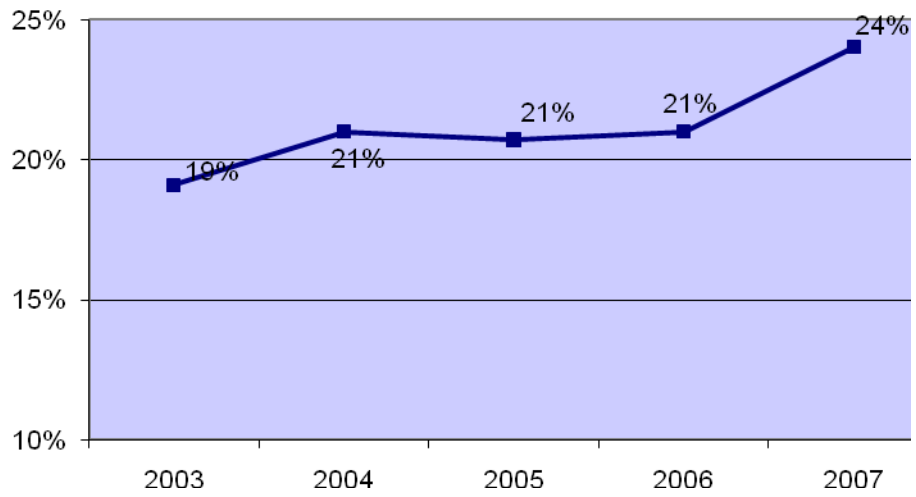
Fatal & Serious Injury Rate Per 100K Population



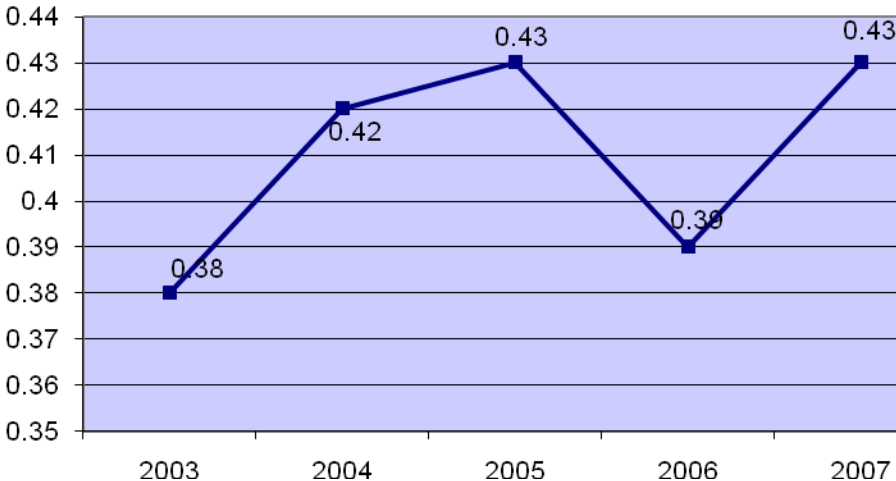
Number of Alcohol-Related Fatalities



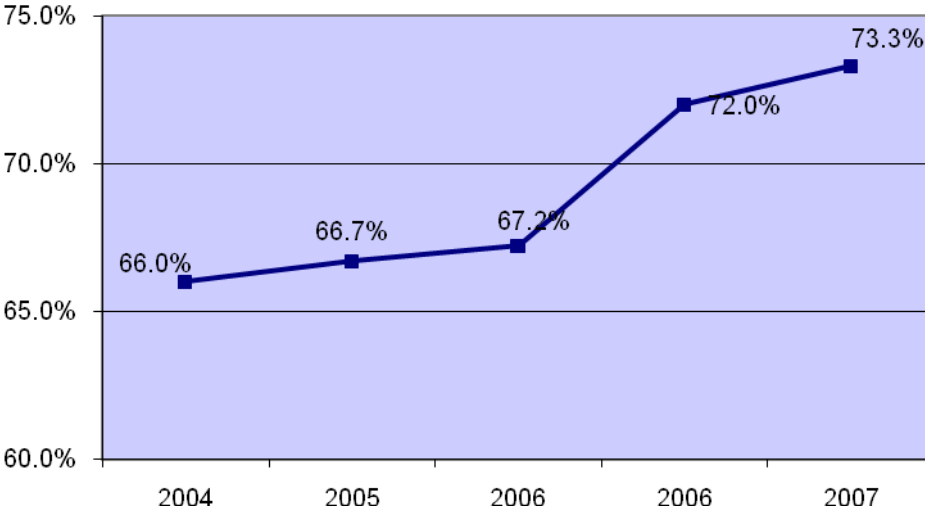
Percent of all Fatalities that are Alcohol-Related



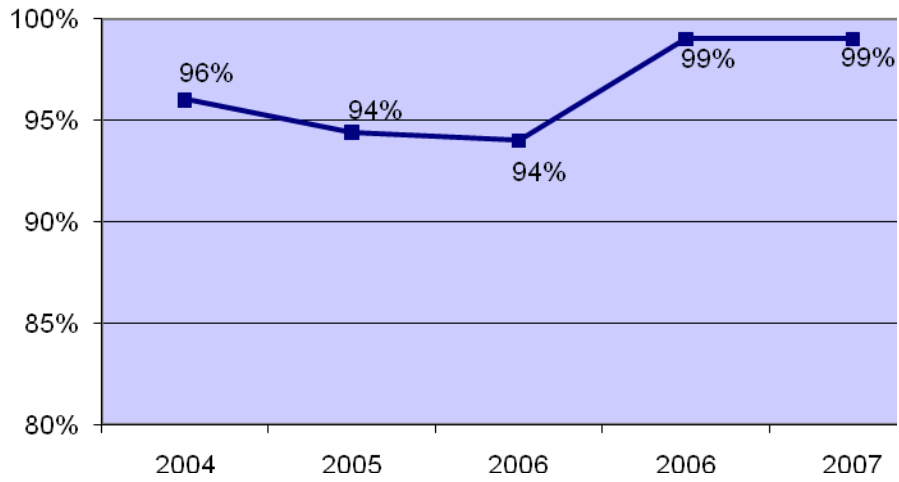
Alcohol-Related Fatality Rate per 100 Million Vehicle Miles Traveled



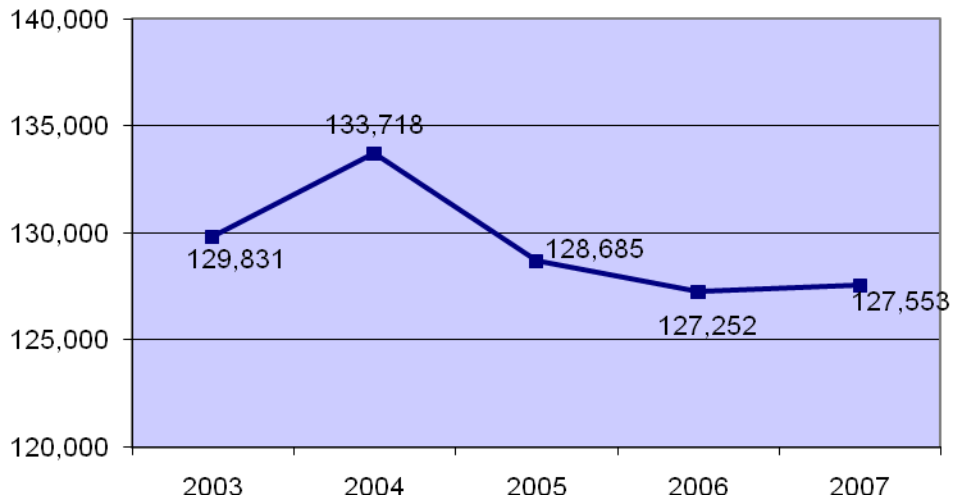
Seat Belt Usage (Front Seat Occupants)



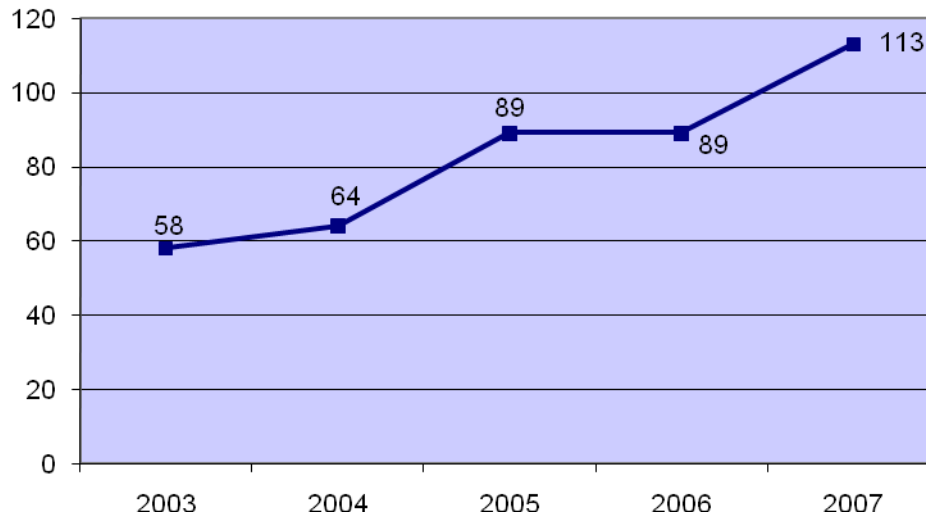
Percent of Children (Under Age 4) in Child Restraints



Motor Vehicle Crashes



Motorcyclist Fatalities



2005-2007 INDIVIDUAL FACTOR RANKINGS (1 = most problems, 120 = least problems)

PERCENT WEIGHT (calculated based on numeric weight)	4.0%	0.0%	16.0%	24.0%	8.0%	8.0%	8.0%	8.0%	8.0%	8.0%	8.0%		
NUMERIC WEIGHT (assigned)	0.5	0.0	2.0	3.0	1.0	1.0	1.0	1.0	1.0	1.0	1.0	TOP 1-25	
County name	ESTIMATED POPULATION	TOTAL CRASHES	FATALITIES	INCAP INJURIES	FAI RATE PER 100MVM	IMPAIRED DRIVING COLLISIONS	OBSERVED RESTRAINT USE	BELTED FATALITIES PERCENT	SPEED CRASHES	CMV CRASHES	MOTORCYCLE COLLISIONS	OVERALL RANK (1 - 120)	%
ADAIR	62	68	99	84	97	74	6	113	72	58	104	96	79.8%
ALLEN	59	66	83	60	26	71	22	38	69	65	65	59	48.7%
ANDERSON	54	58	116	95	119	65	55	44	69	60	32	92	76.4%
BALLARD	107	108	99	97	44	84	5	29	111	62	108	91	75.6%
BARREN	25	21	28	18	62	29	66	77	32	20	29	22	17.6%
BATH	94	85	85	93	96	86	10	36	88	92	99	94	78.1%
BELL	37	42	52	35	29	45	74	29	55	46	59	36	29.4%
BOONE	4	4	8	10	104	7	110	96	4	4	5	17	13.4%
BOURBON	56	47	85	50	42	38	45	68	30	55	42	50	41.1%
BOYD	17	14	46	17	52	21	95	106	19	15	13	29	23.5%
BOYLE	38	29	52	41	33	39	53	111	34	53	27	39	31.9%
BRACKEN	106	105	99	105	74	97	44	64	76	89	72	104	86.5%
BREATHITT	74	69	41	29	2	55	40	66	92	74	70	40	32.7%
BRECKINRIDGE	57	74	65	39	5	87	3	44	107	92	85	52	42.8%
BULLITT	11	18	24	12	77	14	106	28	24	10	14	13	10.0%
BUTLER	86	97	46	108	99	104	31	6	89	104	69	88	73.1%
CALDWELL	88	75	107	98	109	85	104	1	77	62	94	105	87.3%
CALLOWAY	30	26	34	43	51	32	46	40	44	50	18	33	26.8%
CAMPBELL	8	8	34	14	84	8	88	117	7	11	12	24	19.3%
CARLISLE	117	116	118	102	23	117	20	97	111	107	116	113	94.1%
CARROLL	98	59	70	65	85	63	33	97	83	38	56	71	58.8%
CARTER	39	48	19	68	108	40	66	6	40	48	50	43	35.2%
CASEY	72	94	59	80	37	66	1	97	100	103	79	75	62.1%
CHRISTIAN	10	12	15	7	39	12	102	38	9	12	11	4	2.5%
CLARK	31	23	52	62	115	27	71	29	29	28	27	44	36.1%
CLAY	50	63	22	60	50	53	73	9	42	85	56	42	34.4%
CLINTON	102	82	77	109	78	80	3	9	95	86	99	90	74.7%
CRITTENDEN	103	95	85	68	3	97	82	26	100	74	90	79	65.5%
CUMBERLAND	114	115	85	113	59	108	25	1	105	107	108	101	84.0%
DAVISS	7	6	14	11	53	5	112	44	13	14	9	10	7.5%
EDMONSON	90	104	114	89	67	104	58	20	100	97	104	106	88.2%
ELLIOTT	111	113	97	98	4	108	23	68	114	119	99	102	84.8%
ESTILL	77	84	99	116	114	97	28	115	84	107	85	116	96.6%
FAYETTE	2	2	2	2	93	2	99	110	2	2	2	11	8.4%
FLEMING	78	80	99	100	95	78	36	29	111	96	99	103	85.7%

2005-2007 INDIVIDUAL FACTOR RANKINGS (1 = most problems, 120 = least problems)

PERCENT WEIGHT (calculated based on numeric weight)	4.0%	0.0%	16.0%	24.0%	8.0%	8.0%	8.0%	8.0%	8.0%	8.0%	8.0%		
NUMERIC WEIGHT (assigned)	0.5	0.0	2.0	3.0	1.0	1.0	1.0	1.0	1.0	1.0	1.0	TOP 1-25	
County name	ESTIMATED POPULATION	TOTAL CRASHES	FATALITIES	INCAP INJURIES	FAI RATE PER 100MVM	IMPAIRED DRIVING COLLISIONS	OBSERVED RESTRAINT USE	BELTED FATALITIES PERCENT	SPEED CRASHES	CMV CRASHES	MOTORCYCLE COLLISIONS	OVERALL RANK (1 - 120)	%
FLOYD	24	28	12	36	81	15	75	57	21	22	26	23	18.4%
FRANKLIN	18	16	59	21	72	13	87	15	8	23	20	21	16.8%
FULTON	115	107	85	95	14	102	50	14	96	97	113	93	77.3%
GALLATIN	109	79	70	106	117	80	93	92	58	42	80	100	83.1%
GARRARD	68	62	107	83	58	64	35	97	49	92	62	86	71.4%
GRANT	45	38	45	28	80	43	103	67	32	26	65	41	33.6%
GRAVES	28	31	39	40	79	29	29	44	36	29	24	32	26.0%
GRAYSON	42	41	65	38	43	59	94	64	54	53	41	51	42.0%
GREEN	95	110	119	119	120	118	15	119	119	113	120	119	99.1%
GREENUP	29	39	42	59	98	47	84	104	30	61	38	61	50.4%
HANCOCK	105	111	91	109	69	114	109	97	96	83	99	117	97.4%
HARDIN	6	7	6	5	75	10	90	108	11	7	7	12	9.2%
HARLAN	35	46	30	51	63	31	76	78	48	56	49	45	36.9%
HARRISON	60	54	73	48	8	46	54	44	52	81	54	49	40.3%
HART	61	61	34	55	101	62	62	87	47	35	70	58	47.8%
HENDERSON	21	17	16	19	46	23	98	63	22	16	19	18	14.2%
HENRY	73	72	105	42	56	77	105	9	64	44	74	64	52.9%
HICKMAN	118	119	97	118	90	119	12	1	118	112	118	112	93.2%
HOPKINS	19	19	25	25	94	20	116	44	18	17	21	28	22.6%
JACKSON	84	91	91	56	6	102	63	5	82	100	97	72	59.6%
JEFFERSON	1	1	1	1	55	1	117	84	1	1	1	3	1.6%
JESSAMINE	20	20	20	16	16	22	77	95	15	30	17	14	10.9%
JOHNSON	48	60	39	73	73	58	106	68	80	64	35	65	53.7%
KENTON	3	3	13	4	91	3	111	58	3	3	3	9	6.7%
KNOTT	64	64	42	45	20	52	47	113	61	40	59	47	38.6%
KNOX	32	43	25	15	9	51	56	19	37	52	38	15	11.7%
LARUE	83	78	77	65	57	79	96	68	65	68	90	80	66.3%
LAUREL	15	15	5	8	34	17	80	94	16	8	15	7	5.0%
LAWRENCE	71	100	59	75	70	97	50	44	115	73	108	84	69.7%
LEE	110	118	91	112	40	107	8	89	109	114	111	109	90.7%
LESLIE	91	93	73	49	7	88	30	60	75	57	80	60	49.5%
LETCHER	47	53	21	33	19	42	7	35	39	32	38	16	12.6%
LEWIS	81	86	52	78	35	80	52	44	109	71	112	76	63.0%
LINCOLN	43	55	16	27	12	40	69	59	52	65	44	30	24.3%
LIVINGSTON	101	88	73	71	28	74	91	76	84	78	80	81	67.2%

2005-2007 INDIVIDUAL FACTOR RANKINGS (1 = most problems, 120 = least problems)

PERCENT WEIGHT (calculated based on numeric weight)	4.0%	0.0%	16.0%	24.0%	8.0%	8.0%	8.0%	8.0%	8.0%	8.0%	8.0%		
NUMERIC WEIGHT (assigned)	0.5	0.0	2.0	3.0	1.0	1.0	1.0	1.0	1.0	1.0	1.0	TOP 1-25	
County name	ESTIMATED POPULATION	TOTAL CRASHES	FATALITIES	INCAP INJURIES	FAI RATE PER 100MVM	IMPAIRED DRIVING COLLISIONS	OBSERVED RESTRAINT USE	BELTED FATALITIES PERCENT	SPEED CRASHES	CMV CRASHES	MOTORCYCLE COLLISIONS	OVERALL RANK (1 - 120)	%
LOGAN	41	45	59	75	103	56	42	20	58	31	46	55	45.3%
LYON	108	92	111	85	112	104	120	68	78	51	90	110	91.5%
MCCRACKEN	13	9	9	9	31	11	68	107	14	13	6	6	4.2%
MCCREARY	63	106	46	64	27	73	78	44	69	110	62	62	51.2%
MCLEAN	100	57	111	72	22	108	24	111	107	101	104	99	82.3%
MADISON	9	32	7	24	111	9	85	88	5	9	8	19	15.1%
MAGOFFIN	87	98	107	113	116	94	85	44	94	81	97	115	95.7%
MARION	58	44	52	94	76	50	60	1	74	67	77	68	56.3%
MARSHALL	34	10	34	33	83	26	61	97	25	33	25	34	27.7%
MARTIN	93	89	77	102	71	72	14	60	66	86	85	89	73.9%
MASON	65	101	77	51	45	44	32	36	56	45	36	46	37.8%
MEADE	40	50	30	32	15	37	70	78	61	86	50	37	30.2%
MENIFEE	116	112	116	117	88	112	43	115	96	114	104	118	98.3%
MERCER	53	51	85	89	102	53	48	97	45	68	50	82	68.0%
METCALFE	99	83	91	75	25	101	17	20	91	77	74	74	61.3%
MONROE	92	109	46	102	49	114	9	44	116	89	94	87	72.2%
MONTGOMERY	44	37	28	44	38	34	19	42	51	46	36	31	25.2%
MORGAN	79	76	77	80	41	70	38	16	41	110	72	69	57.1%
MUHLENBERG	33	35	25	47	82	49	59	24	57	39	30	35	28.5%
NELSON	23	25	22	26	64	19	72	29	28	40	21	20	15.9%
NICHOLAS	113	114	111	115	54	116	38	20	116	114	113	114	94.9%
OHIO	51	49	59	36	47	57	108	109	46	43	62	57	47.0%
OLDHAM	16	27	65	46	113	33	119	78	23	37	45	56	46.2%
OWEN	97	99	99	100	36	90	13	78	89	104	65	97	80.6%
OWSLEY	119	117	105	111	13	113	2	68	100	117	119	107	89.0%
PENDLETON	76	67	52	87	24	68	100	18	60	72	50	63	52.1%
PERRY	36	34	18	23	21	25	15	13	38	27	46	8	5.8%
PIKE	12	11	3	3	1	6	79	43	10	6	10	1	0.0%
POWELL	82	86	73	92	86	90	65	17	99	106	80	95	78.9%
PULASKI	14	13	10	13	48	16	17	86	12	21	16	5	3.3%
ROBERTSON	120	120	120	120	100	120	27	119	120	120	116	120	100.0%
ROCKCASTLE	70	56	83	65	118	69	101	26	35	35	74	73	60.5%
ROWAN	52	33	34	31	30	35	20	60	43	49	32	26	21.0%
RUSSELL	66	70	46	106	110	61	49	25	92	91	59	83	68.9%
SCOTT	22	22	30	22	87	18	57	78	20	19	30	25	20.1%

2005-2007 INDIVIDUAL FACTOR RANKINGS (1 = most problems, 120 = least problems)													
PERCENT WEIGHT (calculated based on numeric weight)	4.0%	0.0%	16.0%	24.0%	8.0%	8.0%	8.0%	8.0%	8.0%	8.0%	8.0%		
NUMERIC WEIGHT (assigned)	0.5	0.0	2.0	3.0	1.0	1.0	1.0	1.0	1.0	1.0	1.0	TOP 1-25	
County name	ESTIMATED POPULATION	TOTAL CRASHES	FATALITIES	INCAP INJURIES	FAI RATE PER 100MVM	IMPAIRED DRIVING COLLISIONS	OBSERVED RESTRAINT USE	BELTED FATALITIES PERCENT	SPEED CRASHES	CMV CRASHES	MOTORCYCLE COLLISIONS	OVERALL RANK (1 - 120)	%
SHELBY	26	24	42	29	107	24	118	78	17	24	23	38	31.0%
SIMPSON	67	52	70	58	106	48	64	105	61	18	54	66	54.6%
SPENCER	69	90	115	88	65	94	112	44	100	117	85	108	89.9%
TAYLOR	49	40	30	63	61	59	26	84	49	59	46	48	39.4%
TODD	89	103	65	73	18	90	81	9	84	80	77	70	57.9%
TRIGG	85	73	77	56	66	67	89	118	81	74	80	85	70.5%
TRIMBLE	104	96	107	86	10	96	115	68	78	102	65	98	81.5%
UNION	75	65	91	68	32	80	97	68	72	68	56	78	64.7%
WARREN	5	5	4	6	89	4	33	56	6	5	4	2	0.8%
WASHINGTON	96	81	46	54	11	76	41	40	67	92	85	54	44.5%
WAYNE	55	71	65	78	68	89	11	6	68	83	90	67	55.4%
WEBSTER	80	76	91	89	92	93	114	90	84	79	113	111	92.4%
WHITLEY	27	30	11	20	60	36	92	91	27	25	32	27	21.8%
WOLFE	112	102	52	82	17	111	37	29	106	97	94	77	63.8%
WOODFORD	46	36	59	53	105	28	82	93	26	33	42	53	43.6%

U.S. Department of Transportation National Highway Traffic Safety Administration

State: Kentucky

Highway Safety Plan Cost Summary

Page: 1

2009-HSP-1

Report Date: 08/27/2008

For Approval

Program Area	Project	Description	Prior Approved Program Funds	State Funds	Previous Bal.	Incre/(Decre)	Current Balance	Share to Local
NHTSA								
NHTSA 402								
Planning and Administration								
	PA-2009-01-00-00	Planning & Admin	\$.00	\$121,335.00	\$.00	\$121,335.00	\$121,335.00	\$.00
	Planning and Administration		\$.00	\$121,335.00	\$.00	\$121,335.00	\$121,335.00	\$.00
	Total							
Alcohol								
	AL-2009-01-00-00	Alcohol Prog Mgmt	\$.00	\$.00	\$.00	\$77,329.00	\$77,329.00	\$.00
	AL-2009-02-00-00	Alcohol P I & E	\$.00	\$.00	\$.00	\$50,000.00	\$50,000.00	\$.00
	AL-2009-03-00-00	Alcohol Networking	\$.00	\$.00	\$.00	\$5,000.00	\$5,000.00	\$.00
	AL-2009-04-00-00	DUI Awards Ceremony	\$.00	\$.00	\$.00	\$22,000.00	\$22,000.00	\$.00
	AL-2009-05-00-00	KSP Media Relations	\$.00	\$.00	\$.00	\$20,000.00	\$20,000.00	\$.00
	AL-2009-06-00-00	KCPC-Youth Alc Coord	\$.00	\$.00	\$.00	\$86,250.00	\$86,250.00	\$86,250.00
	AL-2009-07-00-00	MADD Court Monitoring	\$.00	\$.00	\$.00	\$67,565.00	\$67,565.00	\$67,565.00
	AL-2009-08-00-00	Alexandria PD	\$.00	\$.00	\$.00	\$23,668.00	\$23,668.00	\$23,668.00
	AL-2009-09-00-00	Ashland PD	\$.00	\$.00	\$.00	\$10,000.00	\$10,000.00	\$10,000.00
	AL-2009-10-00-00	Bourbon Co Sheriff	\$.00	\$.00	\$.00	\$7,847.00	\$7,847.00	\$7,847.00
	AL-2009-11-00-00	Calloway Co Sheriff	\$.00	\$.00	\$.00	\$12,442.00	\$12,442.00	\$12,442.00
	AL-2009-12-00-00	Covington PD	\$.00	\$.00	\$.00	\$50,000.00	\$50,000.00	\$50,000.00
	AL-2009-13-00-00	Daviess Co Sheriff	\$.00	\$.00	\$.00	\$26,000.00	\$26,000.00	\$26,000.00
	AL-2009-14-00-00	Florence PD	\$.00	\$.00	\$.00	\$10,000.00	\$10,000.00	\$10,000.00
	AL-2009-15-00-00	Franklin PD	\$.00	\$.00	\$.00	\$9,770.00	\$9,770.00	\$9,770.00
	AL-2009-16-00-00	Georgetown PD	\$.00	\$.00	\$.00	\$24,750.00	\$24,750.00	\$24,750.00
	AL-2009-17-00-00	Glasgow PD	\$.00	\$.00	\$.00	\$20,000.00	\$20,000.00	\$20,000.00
	AL-2009-18-00-00	Hardin Co Sheriff	\$.00	\$.00	\$.00	\$5,000.00	\$5,000.00	\$5,000.00

Highway Safety Plan Cost Summary

2009-HSP-1

Report Date: 08/27/2008

For Approval

Program Area	Project	Description	Prior Approved Program Funds	State Funds	Previous Bal.	Incre/(Decre)	Current Balance	Share to Local
	AL-2009-19-00-00	Harlan Co Sheriff	\$.00	\$.00	\$.00	\$ 9,300.00	\$ 9,300.00	\$ 9,300.00
	AL-2009-20-00-00	Harlan PD	\$.00	\$.00	\$.00	\$ 13,530.00	\$ 13,530.00	\$ 13,530.00
	AL-2009-21-00-00	Highland Heights PD	\$.00	\$.00	\$.00	\$ 20,000.00	\$ 20,000.00	\$ 20,000.00
	AL-2009-22-00-00	Hillview PD	\$.00	\$.00	\$.00	\$ 27,145.00	\$ 27,145.00	\$ 27,145.00
	AL-2009-23-00-00	Kenton Co PD	\$.00	\$.00	\$.00	\$ 24,995.00	\$ 24,995.00	\$ 24,995.00
	AL-2009-24-00-00	Laurel Co Sheriff	\$.00	\$.00	\$.00	\$ 35,250.00	\$ 35,250.00	\$ 35,250.00
	AL-2009-25-00-00	Logan Co Sheriff	\$.00	\$.00	\$.00	\$ 8,870.00	\$ 8,870.00	\$ 8,870.00
	AL-2009-26-00-00	Ludlow PD	\$.00	\$.00	\$.00	\$ 3,500.00	\$ 3,500.00	\$ 3,500.00
	AL-2009-27-00-00	Madison Co Sheriff	\$.00	\$.00	\$.00	\$ 35,000.00	\$ 35,000.00	\$ 35,000.00
	AL-2009-28-00-00	Marshall Co Sheriff	\$.00	\$.00	\$.00	\$ 33,178.00	\$ 33,178.00	\$ 33,178.00
	AL-2009-29-00-00	Mt. Washington PD	\$.00	\$.00	\$.00	\$ 7,995.00	\$ 7,995.00	\$ 7,995.00
	AL-2009-30-00-00	Nelson Co Sheriff	\$.00	\$.00	\$.00	\$ 29,412.00	\$ 29,412.00	\$ 29,412.00
	AL-2009-31-00-00	New Haven PD	\$.00	\$.00	\$.00	\$ 2,000.00	\$ 2,000.00	\$ 2,000.00
	AL-2009-32-00-00	Newport PD	\$.00	\$.00	\$.00	\$ 10,000.00	\$ 10,000.00	\$ 10,000.00
	AL-2009-33-00-00	Paducah PD	\$.00	\$.00	\$.00	\$ 40,000.00	\$ 40,000.00	\$ 40,000.00
	AL-2009-34-00-00	Paintsville PD	\$.00	\$.00	\$.00	\$ 17,500.00	\$ 17,500.00	\$ 17,500.00
	AL-2009-35-00-00	Prestonsburg PD	\$.00	\$.00	\$.00	\$ 6,150.00	\$ 6,150.00	\$ 6,150.00
	AL-2009-36-00-00	Pulaski Co Sheriff	\$.00	\$.00	\$.00	\$ 20,000.00	\$ 20,000.00	\$ 20,000.00
	AL-2009-37-00-00	Radcliff PD	\$.00	\$.00	\$.00	\$ 5,000.00	\$ 5,000.00	\$ 5,000.00
	AL-2009-38-00-00	Shepherdsville PD	\$.00	\$.00	\$.00	\$ 12,500.00	\$ 12,500.00	\$ 12,500.00
	AL-2009-39-00-00	Univ of Kentucky PD	\$.00	\$.00	\$.00	\$ 12,000.00	\$ 12,000.00	\$ 12,000.00
	AL-2009-40-00-00	Winchester PD	\$.00	\$.00	\$.00	\$ 10,500.00	\$ 10,500.00	\$ 10,500.00
	Alcohol Total		\$.00	\$.00	\$.00	\$ 911,446.00	\$ 911,446.00	\$ 737,117.00
Occupant Protection								
	OP-2009-01-00-00	Occ Prot Prog Mgmt	\$.00	\$.00	\$.00	\$ 77,329.00	\$ 77,329.00	\$.00

U.S. Department of Transportation National Highway Traffic Safety Administration

State: Kentucky

Highway Safety Plan Cost Summary

2009-HSP-1

For Approval

Page: 3

Report Date: 08/27/2008

Program Area	Project	Description	Prior Approved Program Funds	State Funds	Previous Bal.	Incre/(Decre)	Current Balance	Share to Local
	OP-2009-02-00-00	Occ Prot P I & E	\$.00	\$.00	\$.00	\$50,000.00	\$50,000.00	\$.00
	OP-2009-03-00-00	Occ Prot Networking	\$.00	\$.00	\$.00	\$5,000.00	\$5,000.00	\$.00
	OP-2009-04-00-00	KY Lifesavers Conference	\$.00	\$.00	\$.00	\$45,000.00	\$45,000.00	\$.00
	OP-2009-05-00-00	KSP Media Relations	\$.00	\$.00	\$.00	\$20,000.00	\$20,000.00	\$.00
	OP-2009-06-00-00	UK Surveys	\$.00	\$.00	\$.00	\$160,000.00	\$160,000.00	\$.00
	OP-2009-07-00-00	KACP Central LEL	\$.00	\$.00	\$.00	\$101,798.04	\$101,798.04	\$101,798.04
	OP-2009-08-00-00	KACP Eastern LEL	\$.00	\$.00	\$.00	\$89,500.04	\$89,500.04	\$89,500.04
	OP-2009-09-00-00	KACP Western LEL	\$.00	\$.00	\$.00	\$90,432.16	\$90,432.16	\$90,432.16
	OP-2009-10-00-00	KCPC Northern LEL	\$.00	\$.00	\$.00	\$82,133.56	\$82,133.56	\$82,133.56
	OP-2009-11-00-00	Kosair Children's Hospital-CPS Prog	\$.00	\$.00	\$.00	\$67,300.00	\$67,300.00	\$67,300.00
	OP-2009-12-00-00	Marshall Co Health Dept.	\$.00	\$.00	\$.00	\$17,050.00	\$17,050.00	\$17,050.00
	OP-2009-13-00-00	Pike Co Health Dept.	\$.00	\$.00	\$.00	\$13,560.00	\$13,560.00	\$13,560.00
	OP-2009-14-00-00	Ballard Co Sheriff	\$.00	\$.00	\$.00	\$9,000.00	\$9,000.00	\$9,000.00
	OP-2009-15-00-00	Barbourville PD	\$.00	\$.00	\$.00	\$10,000.00	\$10,000.00	\$10,000.00
	OP-2009-16-00-00	Carlisle PD	\$.00	\$.00	\$.00	\$13,920.00	\$13,920.00	\$13,920.00
	OP-2009-17-00-00	Clay City PD	\$.00	\$.00	\$.00	\$4,000.00	\$4,000.00	\$4,000.00
	OP-2009-18-00-00	Flemingsburg PD	\$.00	\$.00	\$.00	\$4,000.00	\$4,000.00	\$4,000.00
	OP-2009-19-00-00	Fulton Co Sheriff	\$.00	\$.00	\$.00	\$5,000.00	\$5,000.00	\$5,000.00
	OP-2009-20-00-00	Garrard Co Sheriff	\$.00	\$.00	\$.00	\$10,000.00	\$10,000.00	\$10,000.00
	OP-2009-21-00-00	Jackson PD	\$.00	\$.00	\$.00	\$12,000.00	\$12,000.00	\$12,000.00
	OP-2009-22-00-00	Lancaster PD	\$.00	\$.00	\$.00	\$15,000.00	\$15,000.00	\$15,000.00
	OP-2009-23-00-00	Mason Co Sheriff	\$.00	\$.00	\$.00	\$17,000.00	\$17,000.00	\$17,000.00
	OP-2009-24-00-00	Mayfield PD	\$.00	\$.00	\$.00	\$6,500.00	\$6,500.00	\$6,500.00
	OP-2009-25-00-00	Morehead PD	\$.00	\$.00	\$.00	\$11,600.00	\$11,600.00	\$11,600.00

U.S. Department of Transportation National Highway Traffic Safety Administration

State: Kentucky

Highway Safety Plan Cost Summary

2009-HSP-1

For Approval

Page: 4

Report Date: 08/27/2008

Program Area	Project	Description	Prior Approved Program Funds	State Funds	Previous Bal.	Incre/(Decre)	Current Balance	Share to Local	
	OP-2009-26-00-00	Russellville PD	\$.00	\$.00	\$.00	\$15,000.00	\$15,000.00	\$15,000.00	
	OP-2009-27-00-00	Stanton PD	\$.00	\$.00	\$.00	\$6,000.00	\$6,000.00	\$6,000.00	
	OP-2009-28-00-00	Tompkinsville PD	\$.00	\$.00	\$.00	\$18,510.00	\$18,510.00	\$18,510.00	
	OP-2009-29-00-00	Wayne Co Sheriff	\$.00	\$.00	\$.00	\$18,660.00	\$18,660.00	\$18,660.00	
	Occupant Protection Total		\$.00	\$.00	\$.00	\$995,292.80	\$995,292.80	\$637,963.80	
	<i>Pedestrian/Bicycle Safety</i>								
	PS-2009-01-00-00	Kosair Children's Hosp - BIKES	\$.00	\$.00	\$.00	\$56,800.00	\$56,800.00	\$56,800.00	
	Pedestrian/Bicycle Safety Total		\$.00	\$.00	\$.00	\$56,800.00	\$56,800.00	\$56,800.00	
	<i>Police Traffic Services</i>								
	PT-2009-01-00-00	PTS Prog Mgmt	\$.00	\$.00	\$.00	\$79,672.00	\$79,672.00	\$.00	
	PT-2009-02-00-00	P T S P I & E	\$.00	\$.00	\$.00	\$50,000.00	\$50,000.00	\$.00	
	PT-2009-03-00-00	P T S Networking	\$.00	\$.00	\$.00	\$15,000.00	\$15,000.00	\$.00	
	PT-2009-04-00-00	KSP Selective Enforcement	\$.00	\$.00	\$.00	\$392,640.00	\$392,640.00	\$.00	
	PT-2009-05-00-00	KCPC Clearinghouse	\$.00	\$.00	\$.00	\$25,000.00	\$25,000.00	\$25,000.00	
	PT-2009-06-00-00	Anchorage PD	\$.00	\$.00	\$.00	\$25,000.00	\$25,000.00	\$25,000.00	
	PT-2009-07-00-00	Berea PD	\$.00	\$.00	\$.00	\$14,000.00	\$14,000.00	\$14,000.00	
	PT-2009-08-00-00	Boone Co Sheriff	\$.00	\$.00	\$.00	\$25,000.00	\$25,000.00	\$25,000.00	
	PT-2009-09-00-00	Bowling Green PD	\$.00	\$.00	\$.00	\$7,500.00	\$7,500.00	\$7,500.00	
	PT-2009-10-00-00	Boyd Co Sheriff	\$.00	\$.00	\$.00	\$17,000.00	\$17,000.00	\$17,000.00	
	PT-2009-11-00-00	Cadiz PD	\$.00	\$.00	\$.00	\$14,240.00	\$14,240.00	\$14,240.00	
	PT-2009-12-00-00	Campbell Co PD	\$.00	\$.00	\$.00	\$23,500.00	\$23,500.00	\$23,500.00	
	PT-2009-13-00-00	Clark Co Sheriff	\$.00	\$.00	\$.00	\$16,340.00	\$16,340.00	\$16,340.00	
	PT-2009-14-00-00	Cold Spring PD	\$.00	\$.00	\$.00	\$5,000.00	\$5,000.00	\$5,000.00	
	PT-2009-15-00-00	Danville PD	\$.00	\$.00	\$.00	\$20,000.00	\$20,000.00	\$20,000.00	

U.S. Department of Transportation National Highway Traffic Safety Administration

State: Kentucky

Highway Safety Plan Cost Summary
2009-HSP-1
 For Approval

Page: 5

Report Date: 08/27/2008

Program Area	Project	Description	Prior Approved Program Funds	State Funds	Previous Bal.	Incre/(Decre)	Current Balance	Share to Local
	PT-2009-16-00-00	Eddyville PD	\$.00	\$.00	\$.00	\$ 9,310.00	\$ 9,310.00	\$ 9,310.00
	PT-2009-17-00-00	Elizabethtown PD	\$.00	\$.00	\$.00	\$ 15,000.00	\$ 15,000.00	\$ 15,000.00
	PT-2009-18-00-00	Erlanger PD	\$.00	\$.00	\$.00	\$ 22,795.00	\$ 22,795.00	\$ 22,795.00
	PT-2009-19-00-00	Flatwoods PD	\$.00	\$.00	\$.00	\$ 12,325.00	\$ 12,325.00	\$ 12,325.00
	PT-2009-20-00-00	Frankfort PD	\$.00	\$.00	\$.00	\$ 65,000.00	\$ 65,000.00	\$ 65,000.00
	PT-2009-21-00-00	Grant Co Sheriff	\$.00	\$.00	\$.00	\$ 5,000.00	\$ 5,000.00	\$ 5,000.00
	PT-2009-22-00-00	Grayson Co Sheriff	\$.00	\$.00	\$.00	\$ 18,000.00	\$ 18,000.00	\$ 18,000.00
	PT-2009-23-00-00	Hancock So Sheriff	\$.00	\$.00	\$.00	\$ 8,170.00	\$ 8,170.00	\$ 8,170.00
	PT-2009-24-00-00	Independence PD	\$.00	\$.00	\$.00	\$ 20,000.00	\$ 20,000.00	\$ 20,000.00
	PT-2009-25-00-00	Johnson Co Sheriff	\$.00	\$.00	\$.00	\$ 18,000.00	\$ 18,000.00	\$ 18,000.00
	PT-2009-26-00-00	Junction City PD	\$.00	\$.00	\$.00	\$ 6,000.00	\$ 6,000.00	\$ 6,000.00
	PT-2009-27-00-00	Lawrenceburg PD	\$.00	\$.00	\$.00	\$ 10,000.00	\$ 10,000.00	\$ 10,000.00
	PT-2009-28-00-00	Leitchfield PD	\$.00	\$.00	\$.00	\$ 7,700.00	\$ 7,700.00	\$ 7,700.00
	PT-2009-29-00-00	Lexington PD	\$.00	\$.00	\$.00	\$ 40,000.00	\$ 40,000.00	\$ 40,000.00
	PT-2009-30-00-00	London PD	\$.00	\$.00	\$.00	\$ 32,705.00	\$ 32,705.00	\$ 32,705.00
	PT-2009-31-00-00	Louisville Metro PD	\$.00	\$.00	\$.00	\$ 100,000.00	\$ 100,000.00	\$ 100,000.00
	PT-2009-32-00-00	Maadisonville PD	\$.00	\$.00	\$.00	\$ 33,230.00	\$ 33,230.00	\$ 33,230.00
	PT-2009-33-00-00	McCracken Co Sheriff	\$.00	\$.00	\$.00	\$ 32,300.00	\$ 32,300.00	\$ 32,300.00
	PT-2009-34-00-00	Middlesboro PD	\$.00	\$.00	\$.00	\$ 16,830.00	\$ 16,830.00	\$ 16,830.00
	PT-2009-35-00-00	Ohio Co Sheriff	\$.00	\$.00	\$.00	\$ 9,725.00	\$ 9,725.00	\$ 9,725.00
	PT-2009-36-00-00	Oldham Co PD	\$.00	\$.00	\$.00	\$ 15,000.00	\$ 15,000.00	\$ 15,000.00
	PT-2009-37-00-00	Owensboro PD	\$.00	\$.00	\$.00	\$ 8,400.00	\$ 8,400.00	\$ 8,400.00
	PT-2009-38-00-00	Paris PD	\$.00	\$.00	\$.00	\$ 10,657.00	\$ 10,657.00	\$ 10,657.00
	PT-2009-39-00-00	Park Hills PD	\$.00	\$.00	\$.00	\$ 6,000.00	\$ 6,000.00	\$ 6,000.00

U.S. Department of Transportation National Highway Traffic Safety Administration

State: Kentucky

Highway Safety Plan Cost Summary

2009-HSP-1

For Approval

Page: 6

Report Date: 08/27/2008

Program Area	Project	Description	Prior Approved Program Funds	State Funds	Previous Bal.	Incre/(Decre)	Current Balance	Share to Local
	PT-2009-40-00-00	Raceland PD	\$.00	\$.00	\$.00	\$ 8,850.00	\$ 8,850.00	\$ 8,850.00
	PT-2009-41-00-00	Richmond PD	\$.00	\$.00	\$.00	\$ 20,000.00	\$ 20,000.00	\$ 20,000.00
	PT-2009-42-00-00	Shelby Co Sheriff	\$.00	\$.00	\$.00	\$ 10,300.00	\$ 10,300.00	\$ 10,300.00
	PT-2009-43-00-00	Shively PD	\$.00	\$.00	\$.00	\$ 25,000.00	\$ 25,000.00	\$ 25,000.00
	PT-2009-44-00-00	Somerset PD	\$.00	\$.00	\$.00	\$ 10,400.00	\$ 10,400.00	\$ 10,400.00
	PT-2009-45-00-00	Williamstown PD	\$.00	\$.00	\$.00	\$ 6,600.00	\$ 6,600.00	\$ 6,600.00
	PT-2009-46-00-00	Willmore PD	\$.00	\$.00	\$.00	\$ 5,000.00	\$ 5,000.00	\$ 5,000.00
	Police Traffic Services Total		\$.00	\$.00	\$.00	\$ 1,338,189.00	\$ 1,338,189.00	\$ 800,877.00
	Traffic Records							
	TR-2009-01-00-00	Traffic Records Prog Mgmt	\$.00	\$.00	\$.00	\$ 124,000.00	\$ 124,000.00	\$.00
	TR-2009-02-00-00	Traffic Records Networking	\$.00	\$.00	\$.00	\$ 2,500.00	\$ 2,500.00	\$.00
	TR-2009-03-00-00	Kentucky Hospital Association	\$.00	\$.00	\$.00	\$ 150,000.00	\$ 150,000.00	\$ 150,000.00
	Traffic Records Total		\$.00	\$.00	\$.00	\$ 276,500.00	\$ 276,500.00	\$ 150,000.00
	Accident Investigation							
	AI-2009-01-00-00	KSP Accident Reconstruction	\$.00	\$.00	\$.00	\$ 11,000.00	\$ 11,000.00	\$.00
	Accident Investigation Total		\$.00	\$.00	\$.00	\$ 11,000.00	\$ 11,000.00	\$.00
	Driver Education							
	DE-2009-HP-00-00	Undesignated	\$.00	\$.00	\$.00	\$ 750,000.00	\$ 750,000.00	\$ 750,000.00
	Driver Education Total		\$.00	\$.00	\$.00	\$ 750,000.00	\$ 750,000.00	\$ 750,000.00
	Driver Licensing							
	DL-2009-00-00-00	Overall State Match	\$.00	\$ 2,500,000.00	\$.00	\$.00	\$.00	\$.00
	Driver Licensing Total		\$.00	\$ 2,500,000.00	\$.00	\$.00	\$.00	\$.00
	Roadway Safety							
	RS-2009-01-00-00	U K Crash Analysis	\$.00	\$.00	\$.00	\$ 60,000.00	\$ 60,000.00	\$.00

U.S. Department of Transportation National Highway Traffic Safety Administration

State: Kentucky

Highway Safety Plan Cost Summary

2009-HSP-1

For Approval

Page: 7

Report Date: 08/27/2008

Program Area	Project	Description	Prior Approved Program Funds	State Funds	Previous Bal.	Incre/(Decre)	Current Balance	Share to Local
Roadway Safety Total			\$.00	\$.00	\$.00	\$ 60,000.00	\$ 60,000.00	\$.00
Safe Communities								
	SA-2009-01-00-00	Madison Co Health Dept	\$.00	\$.00	\$.00	\$ 49,050.00	\$ 49,050.00	\$ 49,050.00
Safe Communities Total			\$.00	\$.00	\$.00	\$ 49,050.00	\$ 49,050.00	\$ 49,050.00
NHTSA 402 Total			\$.00	\$ 2,621,335.00	\$.00	\$ 4,569,612.80	\$ 4,569,612.80	\$ 3,181,807.80
405 OP SAFETEA-LU								
	K2PM-2009-01-00-00	Media Campaigns	\$.00	\$.00	\$.00	\$ 63,000.00	\$ 63,000.00	\$ 63,000.00
405 Paid Media Total			\$.00	\$.00	\$.00	\$ 63,000.00	\$ 63,000.00	\$ 63,000.00
405 OP SAFETEA-LU Total			\$.00	\$.00	\$.00	\$ 63,000.00	\$ 63,000.00	\$ 63,000.00
NHTSA 406								
	K4PA-2009-01-00-00	P & A	\$.00	\$.00	\$.00	\$ 112,669.10	\$ 112,669.10	\$ 112,669.10
406 Planning and Administration Total			\$.00	\$.00	\$.00	\$ 112,669.10	\$ 112,669.10	\$ 112,669.10
406 Safety Belts Paid Media								
	K4PM-2009-01-00-00	Media Campaigns	\$.00	\$.00	\$.00	\$ 450,000.00	\$ 450,000.00	\$ 450,000.00
406 Safety Belts Paid Media Total			\$.00	\$.00	\$.00	\$ 450,000.00	\$ 450,000.00	\$ 450,000.00
NHTSA 406 Total			\$.00	\$.00	\$.00	\$ 562,669.10	\$ 562,669.10	\$ 562,669.10
408 Data Program SAFETEA-LU								
	K9-2009-HP-00-00	Data Incentive	\$.00	\$.00	\$.00	\$ 668,647.00	\$ 668,647.00	\$.00
408 Data Program Incentive Total			\$.00	\$.00	\$.00	\$ 668,647.00	\$ 668,647.00	\$.00
408 Data Program SAFETEA-LU Total			\$.00	\$.00	\$.00	\$ 668,647.00	\$ 668,647.00	\$.00
410 Alcohol SAFETEA-LU								
	K8-2009-01-00-00	Admin Office of Courts	\$.00	\$.00	\$.00	\$ 45,500.00	\$ 45,500.00	\$.00
	K8-2009-02-00-00	Attorney General - TSRP	\$.00	\$.00	\$.00	\$ 172,795.00	\$ 172,795.00	\$.00
	K8-2009-03-00-00	D.O.C.J.T. - DRE	\$.00	\$.00	\$.00	\$ 75,000.00	\$ 75,000.00	\$.00

Highway Safety Plan Cost Summary

2009-HSP-1

Report Date: 08/27/2008

For Approval

Program Area	Project	Description	Prior Approved Program Funds	State Funds	Previous Bal.	Incre/(Decre)	Current Balance	Share to Local
	K8-2009-04-00-00	KSP Nighthawk	\$.00	\$.00	\$.00	\$ 446,496.00	\$ 446,496.00	\$.00
	410 Alcohol SAFETEA-LU Total		\$.00	\$.00	\$.00	\$ 739,791.00	\$ 739,791.00	\$.00
	410 Alcohol SAFETEA-LU Paid Media							
	K8PM-2009-01-00-00	Media Campaigns	\$.00	\$.00	\$.00	\$ 820,000.00	\$ 820,000.00	\$ 820,000.00
	410 Alcohol SAFETEA-LU Paid Media Total		\$.00	\$.00	\$.00	\$ 820,000.00	\$ 820,000.00	\$ 820,000.00
	410 Alcohol SAFETEA-LU Total		\$.00	\$.00	\$.00	\$ 1,559,791.00	\$ 1,559,791.00	\$ 820,000.00
	2010 Motorcycle Safety							
	K6-2009-HP-00-00	Motorcycle Incentive	\$.00	\$.00	\$.00	\$ 51,500.00	\$ 51,500.00	\$.00
	2010 Motorcycle Safety Incentive Total		\$.00	\$.00	\$.00	\$ 51,500.00	\$ 51,500.00	\$.00
	2010 Motorcycle Safety Total		\$.00	\$.00	\$.00	\$ 51,500.00	\$ 51,500.00	\$.00
	NHTSA Total		\$.00	\$ 2,621,335.00	\$.00	\$ 7,475,219.90	\$ 7,475,219.90	\$ 4,627,476.90
	Total		\$.00	\$ 2,621,335.00	\$.00	\$ 7,475,219.90	\$ 7,475,219.90	\$ 4,627,476.90