



DUI Drugs: Technology, Research, Collaboration, & Training,

Jennifer Harmon

Assistant Director – Forensic Chemistry

Orange County Crime Laboratory

jharmon@occl.ocgov.com



The Orange County Model





Crime Lab Initiatives

Technology

- Proof of Concept
- LCMSMS
- Automated Platforms
- LCMS-TOF
- Oral Fluid at Roadside

Research

- Drug Prevalence
- Drug Stability
- Effectiveness of DRE & SFST

Training & Collaboration

- Toxicology Workshops
- Statewide Stakeholders Meeting for Standardization
- DRE, ARIDE, SFST support
- Behavioral & Preventative Health Partners



Drug Prevalence: The Data

Fatally-Injured Drivers

Year	Case Count	THC	Cannabis Use	THC Only	Ethanol	At least one drug
2016 operators tested (81%)	101	21%	23%	5%	29%	50%
2017 operators tested (80%)	118	17%	18%	9%	32%	56%



Drug Prevalence: The Data

Arrested DUI Drivers

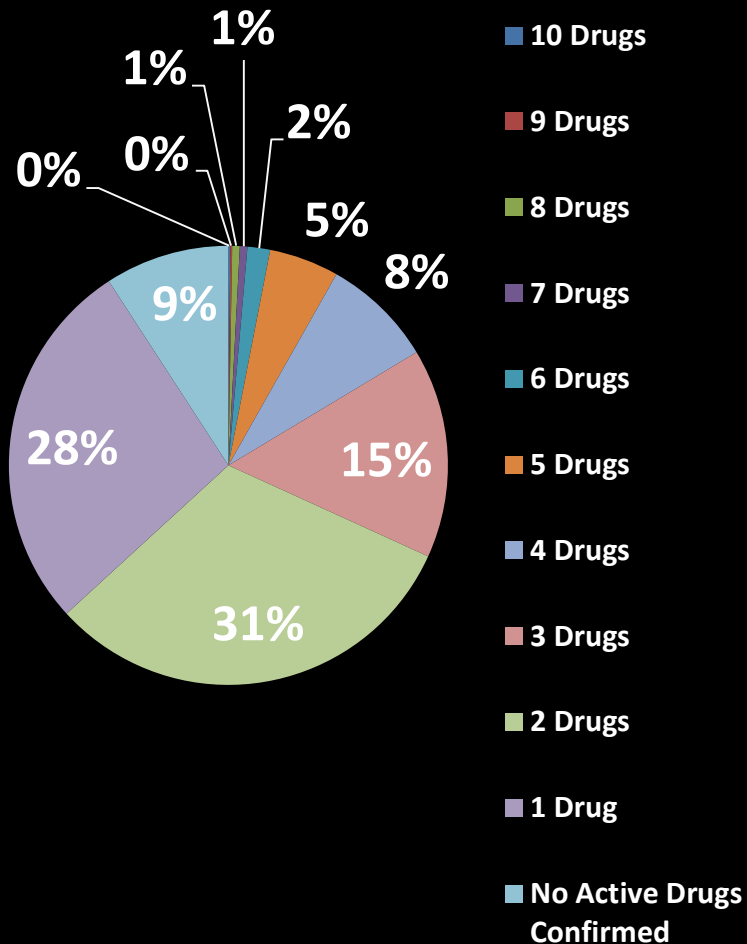
Case Count	THC	Cannabis Use	THC Only	Ethanol	At least one drug	Below 0.08	Above 0.08
						Drug Positive	Drug Positive
3267	24%	29%	4%	78%	48%	58%	34%

90% of DUI cases with no alcohol confirm positive for *at least one drug*

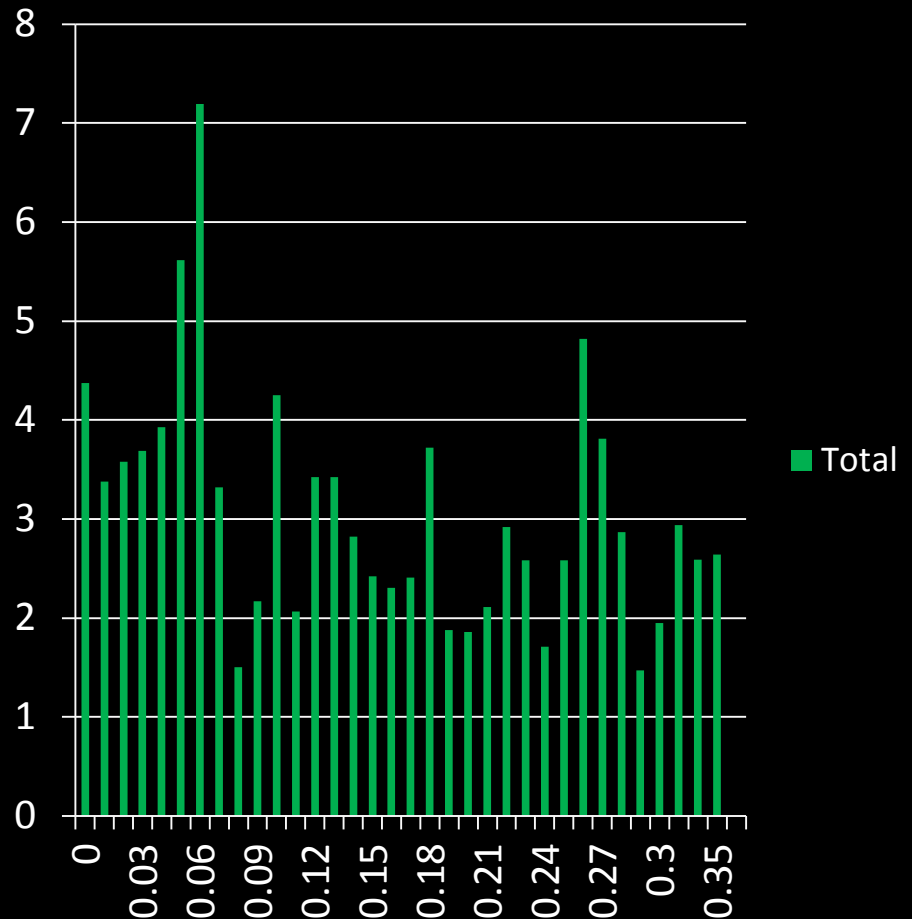


Drug Prevalence: The Data

How Many Different Drugs?



Median THC Concentration vs. BAC





Acknowledgements

Orange County Crime Lab

- Matthew Nixt
- Ariana Figueroa
- Dani Mata
- Kari Declues
- Shelli Perez
- Toxicology Section
- Forensic Alcohol Section

Our Partners

- Donna Meyers – Orange County Coroner Division
- California Office of Traffic Safety
- NHTSA – Chris Murphy
- Kristen Burke – California DOJ
- Suzie Price – OC District Attorney's Office
- Fullerton PD
- CHP
- Newport Beach PD