

All Recalls by Year

CY	DEFECT + COMPLIANCE - RECALL TYPES: Vehicle/Equip/Child Seat/Tire						DEFECT						COMPLIANCE					
	TOTAL		Uninfluenced		Influenced		TOTAL		Uninfluenced		Influenced		TOTAL		Uninfluenced		Influenced	
	No. of Recalls	Affected Population	No. of Recalls	Affected Population	No. of Recalls	Affected Population	No. of Recalls	Affected Population	No. of Recalls	Affected Population	No. of Recalls	Affected Population	No. of Recalls	Affected Population	No. of Recalls	Affected Population	No. of Recalls	Affected Population
1999	440	55,560,458	333	40,570,828	107	14,989,630	349	52,635,122	270	39,168,437	79	13,466,685	91	2,925,336	63	1,402,391	28	1,522,945
2000	626	44,615,540	504	13,193,733	122	31,421,807	501	39,708,133	417	10,062,950	84	29,645,183	125	4,907,407	87	3,130,783	38	1,776,624
2001	527	22,391,967	437	12,139,797	90	10,252,170	436	20,112,189	374	10,520,343	62	9,591,846	91	2,279,778	63	1,619,454	28	660,324
2002	506	25,264,339	413	10,268,484	93	14,995,855	450	20,320,981	372	9,498,939	78	10,822,042	56	4,943,358	41	769,545	15	4,173,813
2003	600	22,780,784	445	11,917,299	155	10,863,485	478	18,172,762	349	7,947,339	129	10,225,423	122	4,608,022	96	3,969,960	26	638,062
2004	698	33,009,036	533	13,827,864	165	19,181,172	564	30,383,887	438	11,513,748	126	18,870,139	134	2,625,149	95	2,314,116	39	311,033
2005	645	20,398,646	465	8,285,726	180	12,112,920	528	19,077,638	393	7,341,090	135	11,736,548	117	1,321,008	72	944,636	45	376,372
2006	613	14,056,632	477	7,157,377	136	6,899,255	495	10,801,420	416	5,179,479	79	5,621,941	118	3,255,212	61	1,977,898	57	1,277,314
2007	713	20,616,143	575	9,885,459	138	10,730,684	585	19,451,517	485	9,352,514	100	10,099,003	128	1,164,626	90	532,945	38	631,681
2008	780	22,200,445	492	12,409,012	288	9,791,433	589	18,688,128	396	11,400,150	193	7,287,978	191	3,512,317	96	1,008,862	95	2,503,455
2009	570	17,576,820	395	8,886,359	175	8,690,461	427	16,798,803	337	8,284,857	90	8,513,946	143	778,017	58	601,502	85	176,515
2010	722	22,645,254	596	17,212,905	126	5,432,349	616	21,391,149	510	16,097,307	106	5,293,842	106	1,254,105	86	1,115,598	20	138,507
2011	656	15,567,909	505	7,697,637	151	7,870,272	558	14,736,705	423	7,117,932	135	7,618,773	98	831,204	82	579,705	16	251,499
2012	659	18,269,690	496	8,663,717	163	9,605,973	540	17,115,038	396	7,915,962	144	9,199,076	119	1,154,652	100	747,755	19	406,897
2013	711	26,291,269	531	18,551,811	180	7,739,458	610	24,675,049	444	17,142,910	166	7,532,139	101	1,616,220	87	1,408,901	14	207,319
2014	869	60,369,817	716	43,243,425	153	17,126,392	721	58,583,073	601	42,025,405	120	16,557,668	148	1,786,744	115	1,218,020	33	568,724
2015	971	86,313,966	874	28,543,162	97	57,770,804	815	82,991,070	735	26,651,050	80	56,340,020	156	3,322,896	139	1,892,112	17	1,430,784
2016	1,031	76,441,654	944	29,266,476	87	47,175,178	858	74,700,484	790	27,702,494	68	46,997,990	173	1,741,170	154	1,563,982	19	177,188
2017	897	42,595,415	838	28,612,990	59	13,982,425	720	40,901,941	676	27,346,534	44	13,555,407	177	1,693,474	162	1,266,456	15	427,018
2018	1,035	35,167,117	962	22,794,935	73	12,372,182	857	33,519,749	800	21,427,724	57	12,092,025	178	1,647,368	162	1,367,211	16	280,157
total	14,269	682,132,901	11,531	353,128,996	2,738	329,003,905	11,697	634,764,838	9,622	323,697,164	2,075	311,067,674	2,572	47,368,063	1,909	29,431,832	663	17,936,231

Vehicle Recall Summary by Year

CY	DEFECT + COMPLIANCE - RECALL TYPE: Vehicle only						DEFECT						COMPLIANCE					
	TOTAL		Uninfluenced		Influenced		TOTAL		Uninfluenced		Influenced		TOTAL		Uninfluenced		Influenced	
	No. of Recalls	Affected Population	No. of Recalls	Affected Population	No. of Recalls	Affected Population	No. of Recalls	Affected Population	No. of Recalls	Affected Population	No. of Recalls	Affected Population	No. of Recalls	Affected Population	No. of Recalls	Affected Population	No. of Recalls	Affected Population
1999	395	19,376,291	298	7,727,007	97	11,649,284	312	16,506,436	240	6,348,471	72	10,157,965	83	2,869,855	58	1,378,536	25	1,491,319
2000	541	24,636,743	443	12,109,060	98	12,527,683	432	20,012,869	357	8,979,092	75	11,033,777	109	4,623,874	86	3,129,968	23	1,493,906
2001	453	13,626,263	376	10,087,582	77	3,538,681	379	11,845,190	322	8,833,836	57	3,011,354	74	1,781,073	54	1,253,746	20	527,327
2002	434	18,435,673	347	8,428,887	87	10,006,786	385	17,564,390	310	7,715,669	75	9,848,721	49	871,283	37	713,218	12	158,065
2003	527	19,062,913	398	10,106,570	129	8,956,343	429	15,318,677	311	6,703,359	118	8,615,318	98	3,744,236	87	3,403,211	11	341,025
2004	600	30,806,580	459	11,776,617	141	19,029,963	493	28,358,599	375	9,516,758	118	18,841,841	107	2,447,981	84	2,259,859	23	188,122
2005	562	18,962,510	406	7,144,357	156	11,818,153	472	18,170,464	346	6,637,314	126	11,533,150	90	792,046	60	507,043	30	285,003
2006	490	11,203,534	395	5,048,886	95	6,154,648	415	8,741,175	341	3,199,985	74	5,541,190	75	2,462,359	54	1,848,901	21	613,458
2007	587	14,816,417	485	5,723,710	102	9,092,707	502	14,147,352	408	5,506,005	94	8,641,347	85	669,065	77	217,705	8	451,360
2008	683	10,207,696	412	3,525,247	271	6,682,449	528	8,268,650	337	2,780,964	191	5,487,686	155	1,939,046	75	744,283	80	1,194,763
2009	491	16,125,894	337	8,034,580	154	8,091,314	369	15,439,188	287	7,442,272	82	7,996,916	122	686,706	50	592,308	72	94,398
2010	647	19,691,419	527	14,309,503	120	5,381,916	561	18,509,824	458	13,248,247	103	5,261,577	86	1,181,595	69	1,061,256	17	120,339
2011	597	13,612,039	451	6,586,549	146	7,025,490	504	12,942,835	373	6,168,676	131	6,774,159	93	669,204	78	417,873	15	251,331
2012	582	16,486,229	435	6,981,502	147	9,504,727	486	15,547,061	346	6,370,130	140	9,176,931	96	939,168	89	611,372	7	327,796
2013	628	20,260,042	462	13,145,729	166	7,114,313	543	19,323,550	385	12,347,064	158	6,976,486	85	936,492	77	798,665	8	137,827
2014	771	50,032,376	649	41,217,262	122	8,815,114	654	48,848,626	543	40,033,933	111	8,814,693	117	1,183,750	106	1,183,329	11	421
2015	863	49,865,402	788	27,094,968	75	22,770,434	728	47,746,174	658	25,388,778	70	22,357,396	135	2,119,228	130	1,706,190	5	413,038
2016	919	50,566,924	860	22,456,964	59	28,109,960	775	49,033,322	717	20,987,400	58	28,045,922	144	1,533,602	143	1,469,564	1	64,038
2017	810	30,668,647	761	23,986,162	49	6,682,485	651	29,738,239	610	23,282,832	41	6,455,407	159	930,408	151	703,330	8	227,078
2018	914	29,317,530	859	21,179,854	55	8,137,676	763	27,967,479	710	19,903,375	53	8,064,104	151	1,350,051	149	1,276,479	2	73,572
total	12,494	477,761,122	10,148	266,670,996	2,346	211,090,126	10,381	444,030,100	8,434	241,394,160	1,947	202,635,940	2,113	33,731,022	1,714	25,276,836	399	8,454,186

Equipment Recall Summary by Year

CY	DEFECT + COMPLIANCE - RECALL TYPE: Equipment only						DEFECT						COMPLIANCE					
	TOTAL		Uninfluenced		Influenced		TOTAL		Uninfluenced		Influenced		TOTAL		Uninfluenced		Influenced	
	No. of Recalls	Affected Population	No. of Recalls	Affected Population	No. of Recalls	Affected Population	No. of Recalls	Affected Population	No. of Recalls	Affected Population	No. of Recalls	Affected Population	No. of Recalls	Affected Population	No. of Recalls	Affected Population	No. of Recalls	Affected Population
1999	33	33,851,801	26	32,830,936	7	1,020,865	29	33,796,543	25	32,807,304	4	989,239	4	55,258	1	23,632	3	31,626
2000	73	1,182,952	55	1,071,308	18	111,644	61	1,118,570	55	1,071,308	6	47,262	12	64,382	0	0	12	64,382
2001	56	1,028,192	47	894,272	9	133,920	45	586,621	42	563,039	3	23,582	11	441,571	5	331,233	6	110,338
2002	51	1,104,284	49	1,049,893	2	54,391	51	1,104,284	49	1,049,893	2	54,391	0	0	0	0	0	0
2003	60	1,373,197	40	1,097,098	20	276,099	43	630,758	34	532,159	9	98,599	17	742,439	6	564,939	11	177,500
2004	78	1,273,691	55	1,124,108	23	149,583	58	1,102,432	50	1,074,134	8	28,298	20	171,259	5	49,974	15	121,285
2005	71	1,088,242	48	804,914	23	283,328	49	648,026	41	456,067	8	191,959	22	440,216	7	348,847	15	91,369
2006	96	2,133,644	56	1,456,313	40	677,331	59	1,468,717	55	1,455,242	4	13,475	37	664,927	1	1,071	36	663,856
2007	108	1,760,379	78	1,526,717	30	233,662	73	1,552,982	72	1,497,982	1	55,000	35	207,397	6	28,735	29	178,662
2008	66	2,630,738	50	1,321,754	16	1,308,984	48	1,311,542	47	1,311,250	1	292	18	1,319,196	3	10,504	15	1,308,692
2009	64	750,794	47	659,693	17	91,101	49	667,196	44	658,157	5	9,039	15	83,598	3	1,536	12	82,062
2010	55	2,843,584	49	2,793,151	6	50,433	47	2,803,408	44	2,771,143	3	32,265	8	40,176	5	22,008	3	18,168
2011	54	625,545	50	575,010	4	50,535	51	604,075	48	553,708	3	50,367	3	21,470	2	21,302	1	168
2012	55	575,584	41	523,219	14	52,365	40	488,962	36	466,817	4	22,145	15	86,622	5	56,402	10	30,220
2013	69	4,526,541	56	3,940,577	13	585,964	58	3,931,549	50	3,375,896	8	555,653	11	594,992	6	564,681	5	30,311
2014	79	2,121,305	55	1,686,566	24	434,739	57	1,771,149	52	1,685,872	5	85,277	22	350,156	3	694	19	349,462
2015	91	35,792,219	73	937,030	18	34,855,189	76	34,692,644	67	800,020	9	33,892,624	15	1,099,575	6	137,010	9	962,565
2016	91	25,303,256	68	6,307,544	23	18,995,712	72	25,201,060	62	6,248,992	10	18,952,068	19	102,196	6	58,552	13	43,644
2017	72	10,553,647	64	3,429,180	8	7,124,467	61	10,512,462	58	3,412,462	3	7,100,000	11	41,185	6	16,718	5	24,467
2018	110	5,640,710	94	1,560,687	16	4,080,023	87	5,501,786	83	1,473,865	4	4,027,921	23	138,924	11	86,822	12	52,102
total	1,432	136,160,305	1,101	65,589,970	331	70,570,335	1,114	129,494,766	1,014	63,265,310	100	66,229,456	318	6,665,539	87	2,324,660	231	4,340,879

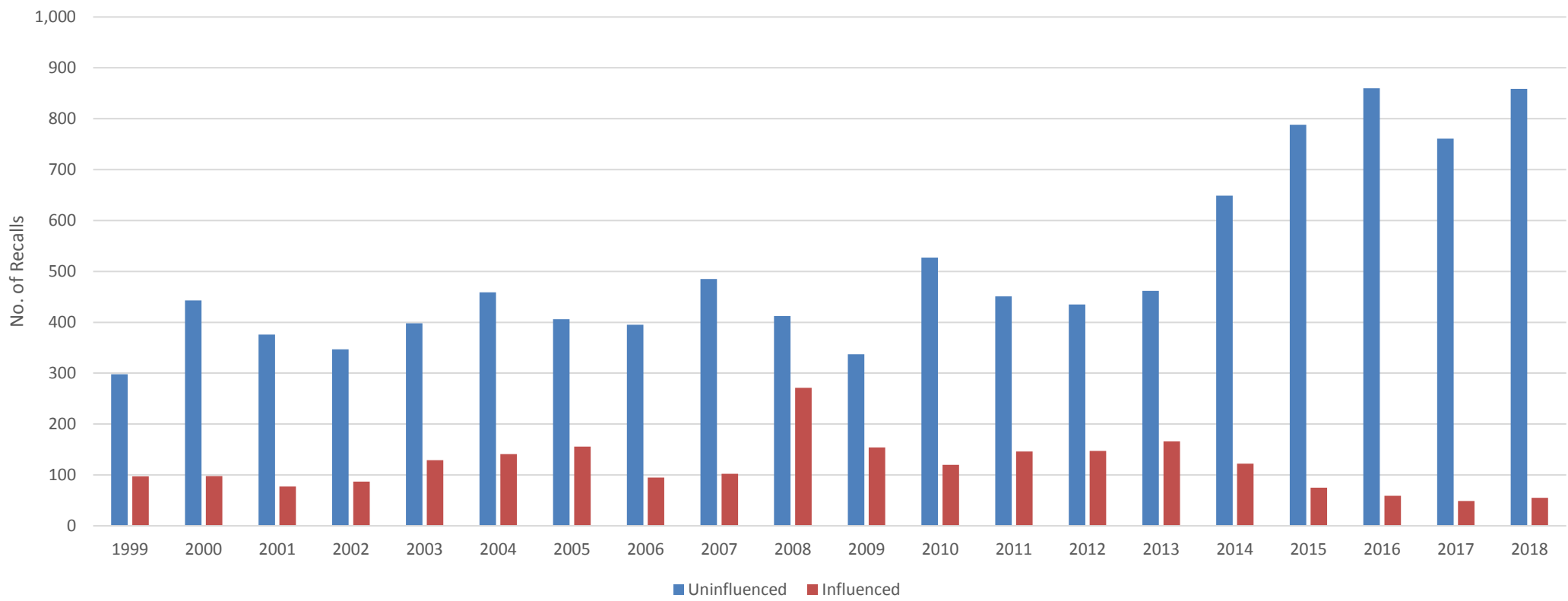
Child Seat Recall Summary by Year

CY	DEFECT + COMPLIANCE - RECALL TYPE: Child Seat only						DEFECT						COMPLIANCE					
	TOTAL		Uninfluenced		Influenced		TOTAL		Uninfluenced		Influenced		TOTAL		Uninfluenced		Influenced	
	No. of Recalls	Affected Population	No. of Recalls	Affected Population	No. of Recalls	Affected Population	No. of Recalls	Affected Population	No. of Recalls	Affected Population	No. of Recalls	Affected Population	No. of Recalls	Affected Population	No. of Recalls	Affected Population	No. of Recalls	Affected Population
1999	5	2,325,907	2	6,426	3	2,319,481	4	2,325,807	1	6,326	3	2,319,481	1	100	1	100	0	0
2000	6	4,383,295	1	815	5	4,382,480	2	4,164,144	0	0	2	4,164,144	4	219,151	1	815	3	218,336
2001	8	3,933,456	5	153,887	3	3,779,569	3	3,891,747	2	134,837	1	3,756,910	5	41,709	3	19,050	2	22,659
2002	8	5,044,756	4	110,078	4	4,934,678	3	973,696	2	54,766	1	918,930	5	4,071,060	2	55,312	3	4,015,748
2003	10	2,343,929	4	712,886	6	1,631,043	4	2,223,232	2	711,726	2	1,511,506	6	120,697	2	1,160	4	119,537
2004	3	357,475	2	355,849	1	1,626	2	355,849	2	355,849	0	0	1	1,626	0	0	1	1,626
2005	4	213,055	3	201,616	1	11,439	2	200,991	1	189,552	1	11,439	2	12,064	2	12,064	0	0
2006	5	129,825	4	62,549	1	67,276	1	67,276	0	0	1	67,276	4	62,549	4	62,549	0	0
2007	11	3,664,521	7	2,353,612	4	1,310,909	7	3,384,512	3	2,073,603	4	1,310,909	4	280,009	4	280,009	0	0
2008	10	1,296,036	10	1,296,036	0	0	7	1,130,982	7	1,130,982	0	0	3	165,054	3	165,054	0	0
2009	8	530,355	4	22,309	4	508,046	5	526,246	2	18,255	3	507,991	3	4,109	2	4,054	1	55
2010	4	54,774	4	54,774	0	0	3	40,982	3	40,982	0	0	1	13,792	1	13,792	0	0
2011	2	883,774	1	89,527	1	794,247	1	794,247	0	0	1	794,247	1	89,527	1	89,527	0	0
2012	4	71,563	4	71,563	0	0	2	69,675	2	69,675	0	0	2	1,888	2	1,888	0	0
2013	3	75,282	2	36,101	1	39,181	1	2,962	1	2,962	0	0	2	72,320	1	33,139	1	39,181
2014	6	7,847,416	1	16,655	5	7,830,761	5	7,674,353	1	16,655	4	7,657,698	1	173,063	0	0	1	173,063
2015	4	268,934	1	213,753	3	55,181	1	213,753	1	213,753	0	0	3	55,181	0	0	3	55,181
2016	9	235,492	7	194,668	2	40,824	4	159,065	4	159,065	0	0	5	76,427	3	35,603	2	40,824
2017	3	751,583	3	751,583	0	0	1	207,037	1	207,037	0	0	2	544,546	2	544,546	0	0
2018	1	148,165	0	0	1	148,165	0	0	0	0	0	0	1	148,165	0	0	1	148,165
total	114	34,559,593	69	6,704,687	45	27,854,906	58	28,406,556	35	5,386,025	23	23,020,531	56	6,153,037	34	1,318,662	22	4,834,375

Tire Recall Summary by Year

CY	DEFECT + COMPLIANCE - RECALL TYPE: Tire only						DEFECT						COMPLIANCE					
	TOTAL		Uninfluenced		Influenced		TOTAL		Uninfluenced		Influenced		TOTAL		Uninfluenced		Influenced	
	No. of Recalls	Affected Population	No. of Recalls	Affected Population	No. of Recalls	Affected Population	No. of Recalls	Affected Population	No. of Recalls	Affected Population	No. of Recalls	Affected Population	No. of Recalls	Affected Population	No. of Recalls	Affected Population	No. of Recalls	Affected Population
1999	7	6,459	7	6,459	0	0	4	6,336	4	6,336	0	0	3	123	3	123	0	0
2000	6	14,412,550	5	12,550	1	14,400,000	6	14,412,550	5	12,550	1	14,400,000	0	0	0	0	0	0
2001	10	3,804,056	9	1,004,056	1	2,800,000	9	3,788,631	8	988,631	1	2,800,000	1	15,425	1	15,425	0	0
2002	13	679,626	13	679,626	0	0	11	678,611	11	678,611	0	0	2	1,015	2	1,015	0	0
2003	3	745	3	745	0	0	2	95	2	95	0	0	1	650	1	650	0	0
2004	17	571,290	17	571,290	0	0	11	567,007	11	567,007	0	0	6	4,283	6	4,283	0	0
2005	8	134,839	8	134,839	0	0	5	58,157	5	58,157	0	0	3	76,682	3	76,682	0	0
2006	22	589,629	22	589,629	0	0	20	524,252	20	524,252	0	0	2	65,377	2	65,377	0	0
2007	7	374,826	5	281,420	2	93,406	3	366,671	2	274,924	1	91,747	4	8,155	3	6,496	1	1,659
2008	21	8,065,975	20	6,265,975	1	1,800,000	6	7,976,954	5	6,176,954	1	1,800,000	15	89,021	15	89,021	0	0
2009	7	169,777	7	169,777	0	0	4	166,173	4	166,173	0	0	3	3,604	3	3,604	0	0
2010	16	55,477	16	55,477	0	0	5	36,935	5	36,935	0	0	11	18,542	11	18,542	0	0
2011	3	446,551	3	446,551	0	0	2	395,548	2	395,548	0	0	1	51,003	1	51,003	0	0
2012	18	1,136,314	16	1,087,433	2	48,881	12	1,009,340	12	1,009,340	0	0	6	126,974	4	78,093	2	48,881
2013	11	1,429,404	11	1,429,404	0	0	8	1,416,988	8	1,416,988	0	0	3	12,416	3	12,416	0	0
2014	13	368,720	11	322,942	2	45,778	5	288,945	5	288,945	0	0	8	79,775	6	33,997	2	45,778
2015	13	387,411	12	297,411	1	90,000	10	338,499	9	248,499	1	90,000	3	48,912	3	48,912	0	0
2016	12	335,982	9	307,300	3	28,682	7	307,037	7	307,037	0	0	5	28,945	2	263	3	28,682
2017	12	621,538	10	446,065	2	175,473	7	444,203	7	444,203	0	0	5	177,335	3	1,862	2	175,473
2018	10	60,712	9	54,394	1	6,318	7	50,484	7	50,484	0	0	3	10,228	2	3,910	1	6,318
total	229	33,651,881	213	14,163,343	16	19,488,538	144	32,833,416	139	13,651,669	5	19,181,747	85	818,465	74	511,674	11	306,791

Vehicle Recalls Per Year 1999 -2018



Quantity of Vehicles Recalled 1999 -2018

